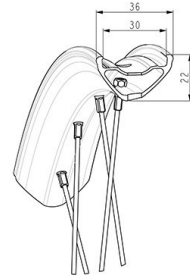
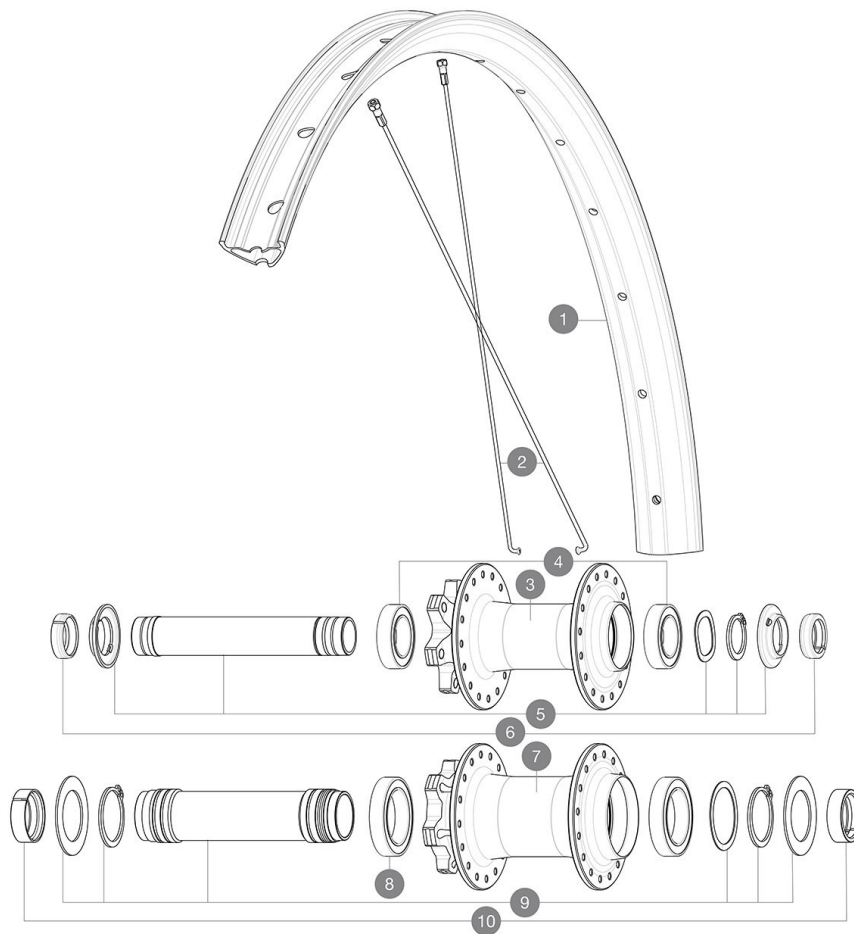


ASTM CATEGORY 5 : GRAVITY RIDING FOCUSED ON THE DESCENT

For a longer longevity of the wheel, Mavic recommends that the total weight supported by the wheels doesn't exceed 150kg, bike included

Minimum tyre size: width 52mm - pressure max. 2.95Bar/43PSI

REFERENCES WHEELS



Specifications	Maxi target
Frontal run out	0,5mm
Lateral run out	0,5mm
Centrerig	1,0mm (2x0,5)
Tension daN	99 > 121
Disc side	

RIMS



&NBSP;:

1	V00096531	Kit Front/Rear rim Deemax Park 29"
	V3750101	35mm UST Green Tape for 30mm wide rims

SPOKES

2	V00062431	Kit 16 ft/rr Jbent bk rd spk 293 29"+np
---	-----------	---

HUB SHELLS

4	V2500901	KIT BEARINGS 18x30x7 + WAVED WASHER + CLIP
5	V2372401	KIT 110mm AXLE QRM AUTO MTB > 2019
8	M40179	FRONT BEARING 25x37x7 20mm AXLE
9	V2373701	KIT 20x110mm BOOST AXLE QRM AUTO MTB > 2019

ADAPTERS

6	V2372501	15mm MTB Axle Cap QRM Auto From 2019
10	V2680401	20x110 BOOST Front Adapter MTB wheels



DEEMAX PARK 29

DELIVERED WITH

UST valve and accessories (129 838 01)	
Pre-installed tubeless rim tape	
User guide	
2 replacement spokes with each wheel	

COMPATIBILITY

Freewheel body: convertible SHIMANO HG MTB steel (kit V3790101 sold separately)	
Rear axle adapters: 12x148 convertible to 9x141 (kit V2510801 sold separately)	
Rear axle: 12mm thru axle, convertible to Quick Release with adapters (delivered with non-boost wheel)	
ID360 Shimano / Sram freewheel body ([V3430101] - Delivered on the wheel)	
QRM Auto bearing preload technology Qualité de Roulements Mavic Auto Our latest innovation. Those cartridge bearings are of course double sealed with C3 internal clearance. Their preload is automatically adjusted to guarantee a perfect spin with no play on the long run.	

Specifications

RIMS

- **Material** : Mactal
 - **Height** : 22 mm
 - **Joint** : SUP welding technology
 - **Internal width** : 30 mm
 - **Drilling** : traditional (front/rear 32 holes)
- Disc brake specific profile
Asymmetrical rim design
- **ETRTO size 29"** : 622x30TC
 - **Tire** : clincher

SPOKES

- **Material** : steel
- **Count** : 20 front and rear

WHEEL HUB

- **Body** : aluminum
- **Body design** : CLASSIC
- **Disc standard** : 6 Bolts only
- **Axle material** : aluminum
- **Front and rear bodies** : aluminum
- **Axles** : Front 15X110 (Boost) or 15x100 ; Rear 12X148 (Boost) or 12x142
- **Freewheel** : Shimano HG MTB / Shimano MS / Sram XD MTB
- **Freewheel** : FTS-L steel

WHEEL WEIGHTS

1185