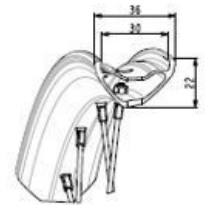
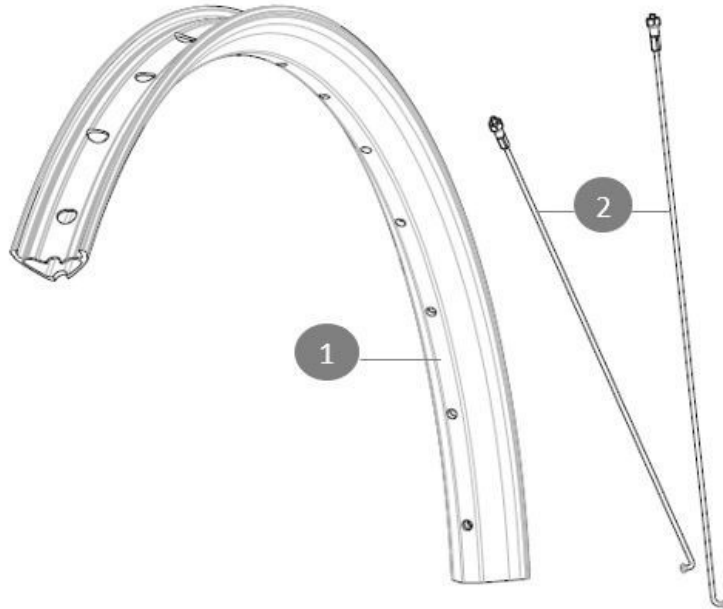


ASTM CATEGORY 5 : GRAVITY RIDING FOCUSED ON THE DESCENT

For a longer longevity of the wheel, Mavic recommends that the total weight supported by the wheels doesn't exceed 150kg, bike included

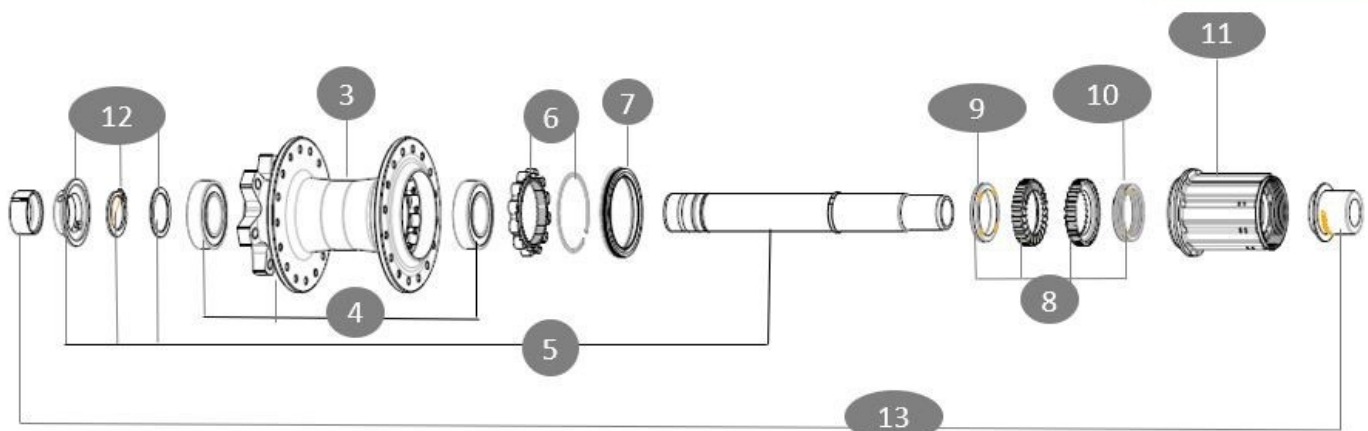
Minimum tyre size: width 52mm - pressure max. 2.95Bar/43PSI

REFERENCES WHEELS



Jante arrière Deemax Park

| Specifications | Maxi target |
|-----------------------|---------------|
| Frontal run out | 0,5mm |
| Lateral run out | 0,5mm |
| Centring | 1,0mm (2x0,5) |
| Tension daN Disc side | 99 > 121 |



RIMS



&NBSP;:

| | | |
|---|-----------|--|
| 1 | V00096731 | "Kit Front/Rear rim Deemax Park 26"" |
| | V3750101 | 35mm UST Green Tape for 30mm wide rims |

SPOKES

| | | |
|---|-----------|--|
| 2 | V00097031 | Kit 16 front/rear Jbent black round spokes 262 26" + steel |
|---|-----------|--|

HUB SHELLS

| | | |
|---|----------|--|
| 4 | M40076 | HUB BEARINGS 17x30x7 6903 x 2 |
| 5 | V2372101 | KIT ID360 135/142 D6T AXLE WITH CLIP |
| 6 | V2252701 | KIT ID360 INSERT SHAPED EAR LOBE > 2017 |
| 7 | V2251601 | KIT ID360 SEAL + GREASE |
| 8 | V2375201 | KIT ID360 24 TEETH 2 RATCHET + MTB SPRING + PAD (specific) |
| 9 | V2375401 | KIT ID360 MTB 24T 3 NOISE REDUCING PADS |

| | | |
|----|----------|--|
| 10 | V2372901 | KIT 3 ID360 MTB SPRINGS |
| 11 | V4000101 | HG11 STEEL ROAD FREE HUB BODY ID360 - while stock last |
| 12 | V2373001 | KIT ADJUST. SYSTEM QRM AUTO ID360 for 17x30x7 bearing |

OPTIONS

| | | |
|---|----------|---|
| 8 | V2372801 | KIT ID360 2x40 TEETH RATCHETS + MTB SPRING + GREASE + PAD |
| | V2510801 | ID360 V2 RrAxeAdapt9x135 |
| | V2510901 | ID360 EVO RrAxeAdpt12x135/150 |

ADAPTERS

| | | |
|----|----------|-----------------------------|
| 13 | V2510701 | ID360V2RrAxeAdapt12x142/148 |
|----|----------|-----------------------------|



DEEMAX PARK 26

DELIVERED WITH

| | |
|---|--|
| UST valve and accessories (129 838 01) | |
| Pre-installed tubeless rim tape | |
| Rear QR adapters (non-boost wheel) | |
| User guide | |
| Fore adjustment wrench | |
| 2 replacement spokes with each wheel | |

COMPATIBILITY

| | |
|--|--|
| Freewheel body: convertible SHIMANO MS (kit V3990101 sold separately) | |
| Freewheel body: convertible SHIMANO HG MTB steel (kit V3790101 sold separately) | |
| Rear axle: for fixing nuts only (included), M9x1 thread | |
| QRM Auto bearing preload technology Qualité de Roulements Mavic Auto Our latest innovation. Those cartridge bearings are of course double sealed with C3 internal clearance. Their preload is automatically adjusted to guarantee a perfect spin with no play on the long run. | |
| Rear axle: 12mm thru axle, convertible to Quick Release with adapters (delivered with non-boost wheel) | |
| ID360 Sram XD freewheel body (IV3740101)) | |

Specifications

RIMS

- **Material** : Mxxtal
 - **Height** : 22 mm
 - **Joint** : SUP welding technology
 - **Internal width** : 30 mm
 - **Drilling** : traditional (front/rear 32 holes)
- Disc brake specific profile
- Asymmetrical rim design
- **ETRTO size** : 559x30TC
 - **Tire** : clincher

SPOKES

- **Material** : steel
- **Count** : 20 front and rear

WHEEL HUB

- **Body** : aluminum
- **Body design** : CLASSIC
- **Disc standard** : 6 Bolts only
- **Axle material** : aluminum
- **Freewheel** : Stellar Drive 80
- **Axles** : Front 15X110 (Boost) or 15x100 ; Rear 12X148 (Boost) or 12x142
- **Freewheel** : Shimano HG road
- **Freewheel** : FTS-L steel

WHEEL WEIGHTS

1237