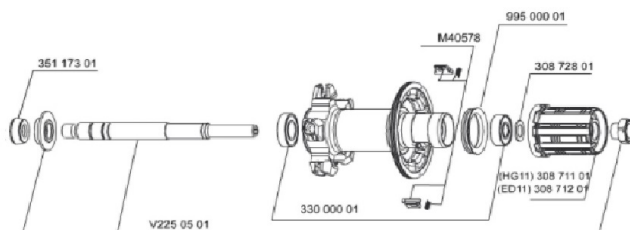


参照ホイール

112162	KSYRIUM SL 011 M10	112164	KSYRIUM SL 011 /M10 PR
112163	KSYRIUM SL 011 ED11	112165	KSYRIUM SL 011 /ED11 PR



## RIMS



&NBSP;:

12021013	REAR KSYRIUM SL 11 RIM
----------	------------------------

## SPOKES

12030401	10 BLK OPP.DRIVE SIDE SPOKES KSYRIUM SL11 298mm
12030301	KIT 10 DS KSYRIUM SL11 BLACK SPOKE 275mm



# Ksyrium SL

## Specifications

ホイールの重み