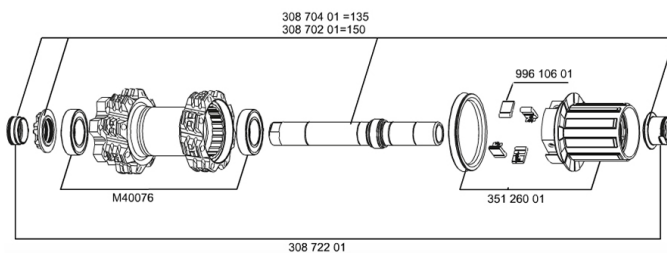
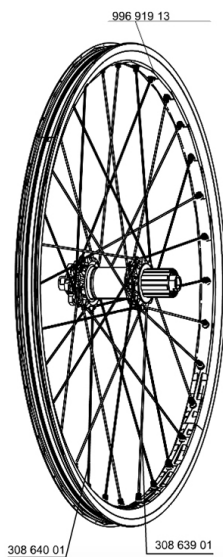


## REFERENCES WHEELS

128081	DEEMAX ULTIMATE 012 RR9/12x135	129523	DEEMAX ULTIMATE 012 PR12x150
128082	DEEMAX ULTIMATE 012 PR9/12x135	129522	DEEMAX ULTIMATE 012 RR12x150



## RIMS



&NBSP;:

99691913	KIT REAR RIM DEEMAX ULTIMATE YELLOW
----------	-------------------------------------

## SPOKES

30864001	KIT 16 NDS M7/7 DEEMAX ULTIMATE 12 SPK 268mm
30863901	KIT 16 DS M7/7 DEEMAX ULTIMATE 12 SPK 266mm

## HUB SHELLS

M40076	HUB BEARINGS 17x30x7 6903 x 2
35126001	ITS-4 FREEWHEEL BODY + SEAL 2013 (NO PAWLS)
30870201	REAR AXLE KIT ITS4 150mm 2012
99610601	PAWLS KIT FOR ITS-4 (OR TS-2)
30870401	REAR QRM + AXLE KIT ITS4 135mm from 2012

## ADAPTERS

30872201	FRAME SUPPORT ITS-4 135mm REAR AXLE > 2012
----------	--------------------------------------------

# MAVIC Deemax Ultimate

## DELIVERED WITH

UST valve and accessories	
UST valve and accessories	
Rear QR adapters	
Rear QR adapters	
Multifonction adjustment wrench	
Multifonction adjustment wrench	
User guide	
User guide	

## Specifications

### RIMS

- **Material** : Mxstal
- **Material** : Mxstal
- **Color** : yellow
- **Joint** : SUP
- **Joint** : SUP
- **Drilling** : Fore
- Disc brake specific profile
- **Drilling** : Fore
- **Weight reduction** : ISM with central spine
- **Valve hole diameter** : 6.5 mm
- Disc brake specific profile
- **Tyre** : UST Tubeless and tubetype
- **Weight reduction** : ISM with central spine
- **Valve hole diameter** : 6.5 mm
- **Internal width** : 21 mm
- **Graphisms** : hot stamped
- **ETRTO size** : 559x21C
- **Tyre** : UST Tubeless and tubetype
- **Internal width** : 21 mm
- **ETRTO size** : 559x21C
- **Recommended tyre sizes** : 2.0 to 2.5
- **Recommended tyre sizes** : 2.0 to 2.5

### SPOKES

- **Material** : steel
- **Material** : steel
- **Shape** : straight pull, bladed
- **Shape** : straight pull, bladed
- **Color** : black
- **Nipples** : integrated M7 aluminum with brake rings
- **Nipples** : integrated M7 aluminum with brake rings
- **Count** : front 28, rear 32
- **Lacing** : front and rear crossed 3
- **Count** : front 28, rear 32
- **Lacing** : front and rear crossed 3

### WHEEL HUB

- **Front and rear bodies** : aluminum with Spoke Retention System (SRS special machining to avoid spoke ejection)
- **Front and rear bodies** : aluminum
- **Color** : yellow
- **Front and rear axle material** : aluminum QRM+
- **Front and rear axle material** : aluminum ITS-4 alloy
- ITS-4 alloy
- QRM+
- ITS-4 alloy

### WHEEL WEIGHTS

Wheel weight 1055