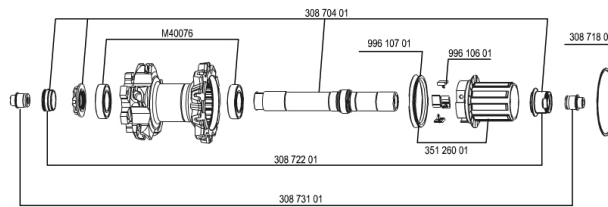


## REFERENZEN RÄDER

328484 CROSSMAX ST 013 DclREAR12/9

328478 CROSSMAX ST 013 D6IREAR12/9



### RIMS



&NBSP;:

|          |                      |
|----------|----------------------|
| 35114013 | REAR CROSSMAX ST RIM |
|----------|----------------------|

### SPOKES

|          |   |
|----------|---|
| 30864301 | 11 SPOKES M7/7 BLK DRV CROSSMAX ST 12 239mm     |
| 30864401 | 10 SPOKES M7/7 BLK OPP.DRV CROSSMAX ST 12 269mm |

### HUB SHELLS

|          |  |
|----------|--|
| 30871801 | ELASTIC RING 56mm diam.                          |
| M40076   | HUB BEARINGS 17x30x7 6903 x 2                    |
| 30870401 | REAR AXLE KIT ITS4 135mm D6T/DCL 2012            |
| 99610701 | ITS4 SEAL  |
| 35126001 | ITS-4 FREEWHEEL BODY + SEAL 2013 (WITHOUT PAWLS) |
| 99610601 | ITS4 PAWLS KIT                                   |

### ADAPTERS

|          |  |
|----------|--|
| 30873101 | 2 REAR REDUCERS 12/9,5mm 2012 ITS4 HUB |
| 30872201 | FORK REST ITS-4 135mm REAR AXLE > 2012 |

# MAVIC Crossmax ST

## GELIEFERT MIT

|   |  |
|---|--|
| BX601 Schnellspanner (HR)                   |  |
| BX601 Schnellspanner (HR)                   |  |
| UST-Ventil und Zubehör                      |  |
| UST-Ventil und Zubehör                      |  |
| 15-mm-Adapter (f $\frac{1}{4}$ r VR)        |  |
| 15-mm-Adapter (f $\frac{1}{4}$ r VR)        |  |
| 9,5-mm-Reduzierstück (f $\frac{1}{4}$ r HR) |  |
| 9,5-mm-Reduzierstück (f $\frac{1}{4}$ r HR) |  |
| 12x142-mm-Adapter (f $\frac{1}{4}$ r HR)    |  |
| 12x142-mm-Adapter (f $\frac{1}{4}$ r HR)    |  |
| Disc-Befestigungsschrauben                  |  |
| Disc-Befestigungsschrauben                  |  |
| Speichenmagnet (beim VR)                    |  |
| Speichenmagnet (beim VR)                    |  |
| Multifunktions-Einstellschüssel             |  |
| Multifunktions-Einstellschüssel             |  |
| Bedienungsanleitung                         |  |
| Bedienungsanleitung                         |  |