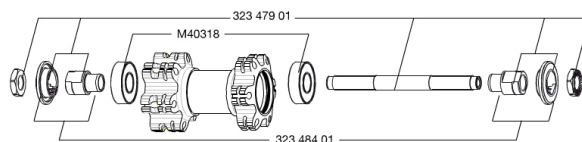


**REFERENCES WHEELS**

354034 CROSSONE 26 FRT

**RIMS**

&amp;NBSP;;

1	36693015	"KIT FRONT/REAR CROSSONE 26"" RIM"
---	----------	------------------------------------

**SPOKES**

2	36689801	KIT 12 FT/NDS CROSSONE SPK 264mm
---	----------	----------------------------------

**HUB SHELLS**

4	M40318	KIT 2 HUB BEARINGS 6001
5	32347901	FRONT AXLE QRM UB
6	32348401	EXPANSIBLE BEARINGS SUPPORT

**DELIVERED WITH**

BR101 quick releases	
Rim tape	
Valve reducer	
User guide	

**Specifications**
**RIMS**

- **Material** : 6106 Aluminum
  - **Joint** : pinned
  - **Drilling** : traditional
- Disc brake specific profile
- **Valve hole diameter** : 8,5 mm with pop off reducer
  - **Tyre** : tubetype
  - **Internal width** : 19 mm
  - **ETRTO size 26"** : 559x19C
  - **ETRTO size 650b/27.5"** : 584x19c
  - **ETRTO size 29"** : 622x19C
  - **Recommended tyre sizes** : 1.5 to 2.3

**SPOKES**

- **Material** : steel
- **Shape** : straight pull, round
- **Nipples** : brass, ABS
- **Count** : 24 front and rear
- **Lacing** : front and rear crossed 2

**WHEEL HUB**

- **Front and rear bodies** : aluminum
  - **Body** : aluminum
  - **Axle material** : steel
- Sealed cartridge bearings
- **Freewheel** : FTS-X steel

**WHEEL WEIGHTS**

Wheel weight  
 Weight Front 26": 850  
 Weight Front 27.5": 905  
 Weight Front 29": 950