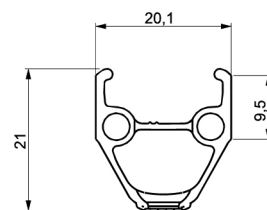
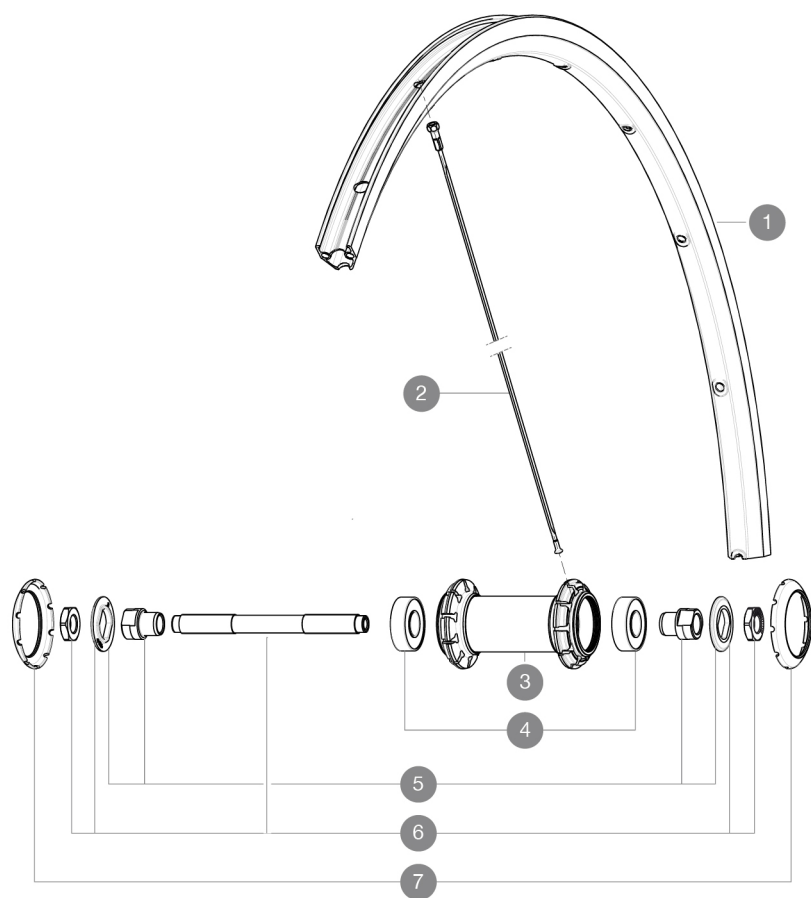


**REFERENCES WHEELS**

F04901 Aksium One Ft



**RIMS**



VALVE HOLE  $\varnothing$  (MM): 6.5 :

<b>1</b>	V2290915	KIT FRONT/REAR RIM AKSIUM ONE
----------	----------	-------------------------------

**SPOKES**

<b>2</b>	V4160101	Kit 10 stainless spokes 285 Ft Ksyrium Equipe S/Ft & NDS Aks
<b>2</b>	10844901	KIT 10 FT KSYRIUM EQ S/FT+NDS AKSIUM SPK 285mm - while stock

**HUB SHELLS**

<b>3</b>	N/A	HUB BODY
<b>4</b>	M40318	KIT 2 HUB BEARINGS 6001
<b>5</b>	99603801	SHORT EXPENSIBLE BEARING SUPPORTS > 2008
<b>6</b>	99603701	FRONT AXLE QRM ROAD 2008
<b>7</b>	12034401	KIT 3 HUB CAPS AERO 10 SLOTS BLACK

# MAVIC Aksium One

## DELIVERED WITH

BR101 quick releases	
Rim tape	
User guide	

## Specifications

### RIMS

- **Material** : S6000 Aluminum
- **Height** : 24 mm
- **Joint** : pinned
- **Drilling** : traditional with H2 reinforcement
- **Brake track** : UB Control
- **Valve hole diameter** : 6.5 mm
- **Tyre** : clincher
- **ETRTO size** : 622x15C
- **Recommended tyre sizes** : 19 to 32 mm

### SPOKES

- **Material** : steel
- **Shape** : straight pull, bladed
- **Nipples** : brass, ABS
- **Count** : 20 front and rear
- **Lacing** : radial front and rear non-drive side, crossed 2 rear drive side

### WHEEL HUB

- **Front and rear bodies** : aluminum
- **Axle material** : steel
- Sealed cartridge bearings
- **Freewheel** : FTS-L steel

### WHEEL WEIGHTS

Wheel weight 845