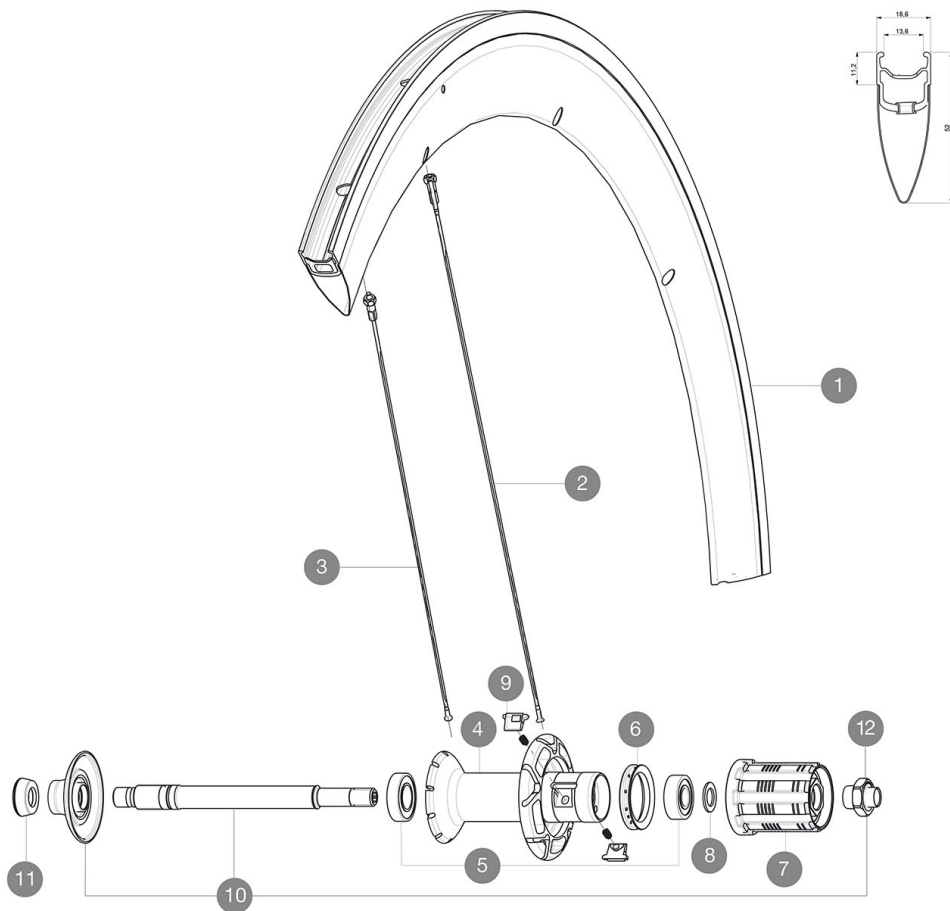


参照ホイール

P51101 CosmicCarbSLEPrBlackM



## RIMS



&NBSP;:

1	V4091713	KIT REAR RIM COSMIC CARBON SLE/COSMIC PRO CARBON
1	V2400313	KIT REAR COSMIC CARBONE SLE RIM BLACK REF STICKER - white st

## SPOKES

2	32979101	10 BLK DRV SPOKES CC SLE CLINCHER 2013 286mm
3	32976801	10 BLK AERO SPOKES FRONT/NON DRIVE SIDE CXR 60 C 289mm

## HUB SHELLS

4	N/A	HUB BODY
5	33000001	REAR HUB B9+6901 BEARINGS 2013
6	99500001	FTSL/FTSX FREEHUB BODY SEAL
7	30871201	FTS-L FREEWHEEL BODY ED11 2013 (8 or 9mm axle compatible)
7	30871101	FTS-L FREEWHEEL BODY HG11 2013 (8 or 9mm axle compatible)
8	30872801	SET OF 3 INTERNAL SILVER SPACERS 9mm FTS-L 2013
9	M40578	FTSL PAWLS KIT (ROAD WHEELS)
10	V2250301	KIT REAR AXLE AERO HUB CXR/CC40/CC SLS/CC SLE/COSMIC PRO CARB
12	V2373101	RIM NUT FOR ROAD ALLOY THROUGH AXLE 9mm

## ADAPTERS

11	35117301	FRONT OR REAR FORK REST KIT R-SYS 2013
----	----------	--



# Cosmic Carbone SLE

## 付属品

BR601 quick releases	
Wheelbags	
Exalith brake pads	
Multifonction adjustment wrench	
User guide	

## Specifications

### リム

- Material : Maxtal and 12K carbon fiber
- Height : 52 mm
- Joint : SUP
- Drilling : traditional
- Brake track : Exalith 2
- Weight reduction : ISM
- Valve hole diameter : 6.5 mm
- Tyre : clincher
- ETRTO size : 622x13C
- Recommended tyre sizes : 19 to 28 mm

### スポーク

- Material : steel
- Shape : straight pull, bladed, double butted
- Nipples : front aluminum, rear brass, ABS
- Count : front 16, rear 20
- Lacing : radial front and rear non-drive side, crossed 2 rear drive side

### ホイールハブ

- Front and rear bodies : aluminum
- Axle material : aluminum
- Adjustable sealed cartridge bearings
- Freewheel : FTS-L steel

### ホイールの重み

890