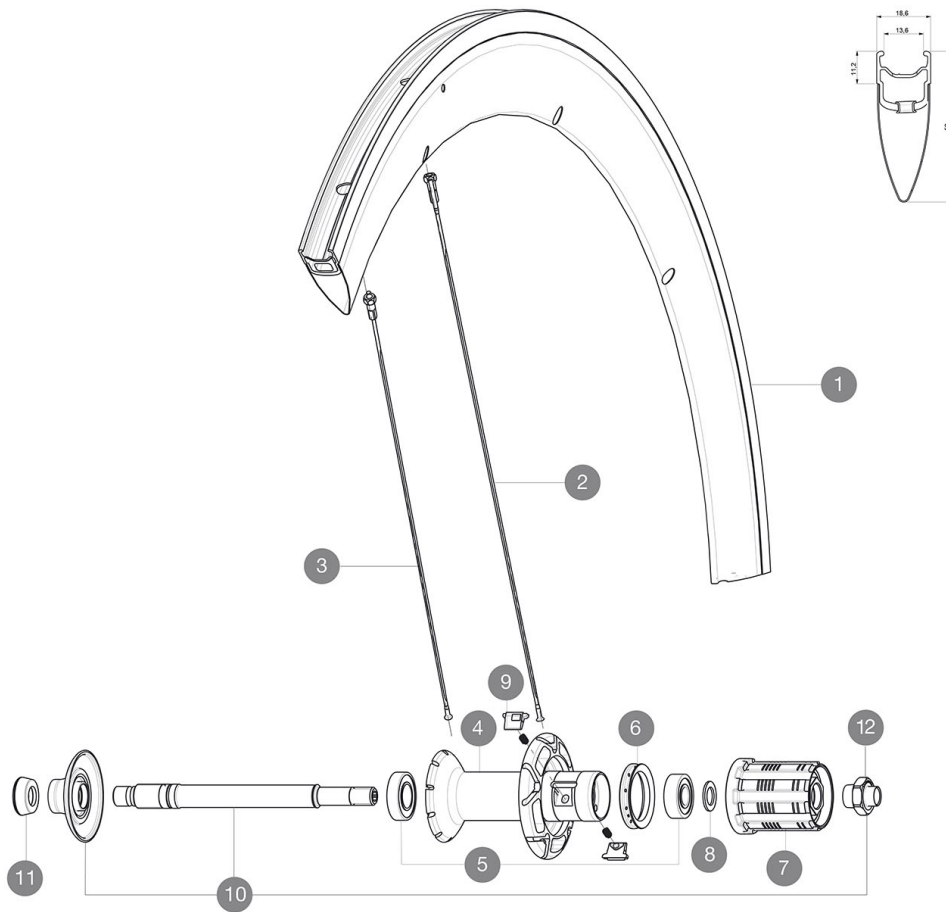


REFERENCES WHEELS

P51101 CosmicCarbSLEPrBlackM



RIMS



&NBSP;:

1	V4091713	KIT REAR RIM COSMIC CARBON SLE/COSMIC PRO CARBON EXALITH V s
1	V2400313	KIT REAR COSMIC CARBONE SLE RIM BLACK REF STICKER - white st

SPOKES

2	32979101	KIT 10 DS COSMIC CARB SLE C 13 BLK SPK 286mm
3	32976801	KIT 10 AERO FT/NDS CXR 60 C BLK SPOKE 289mm

HUB SHELLS

4	N/A	HUB BODY
5	33000001	REAR HUB B9+6901 BEARINGS 2013
6	99500001	FTSL/FTSX FREEHUB BODY SEAL
7	30871201	FTS-L ROAD FREEWHEEL BODY ED11 8/9 compatible
7	30871101	FTS-L ROAD FREEWHEEL BODY HG11 8/9 compatible
8	30872801	SET OF 3 INTERNAL SILVER SPACERS 9mm FTS-L
9	M40578	FTSL PAWLS KIT (ROAD WHEELS)
10	V2250301	KIT REAR AXLE AERO HUB CXR/CC40/CC SLS/CC SLE/COSMIC PRO CAR
12	V2373101	KIT NUT FOR ROAD ALLOY THROUGH AXLE 9mm

ADAPTERS

11	35117301	FT/RR FORK REST R-SYS/CC ULTIMATE > 2013/KSY PRO CARB T
----	----------	---

MAVIC *Cosmic Carbone SLE***DELIVERED WITH**

BR601 quick releases	
Wheelbags	
Exalith brake pads	
Multifonction adjustment wrench	
User guide	

Specifications**RIMS**

- **Material** : Maxtal and 12K carbon fiber
- **Height** : 52 mm
- **Joint** : SUP
- **Drilling** : traditional
- **Brake track** : Exalith 2
- **Weight reduction** : ISM
- **Valve hole diameter** : 6.5 mm
- **Tyre** : clincher
- **ETRTO size** : 622x13C
- **Recommended tyre sizes** : 19 to 28 mm

SPOKES

- **Material** : steel
- **Shape** : straight pull, bladed, double butted
- **Nipples** : front aluminum, rear brass, ABS
- **Count** : front 16, rear 20
- **Lacing** : radial front and rear non-drive side, crossed 2 rear drive side

WHEEL HUB

- **Front and rear bodies** : aluminum
 - **Axle material** : aluminum
- Adjustable sealed cartridge bearings
- **Freewheel** : FTS-L steel

WHEEL WEIGHTS

890