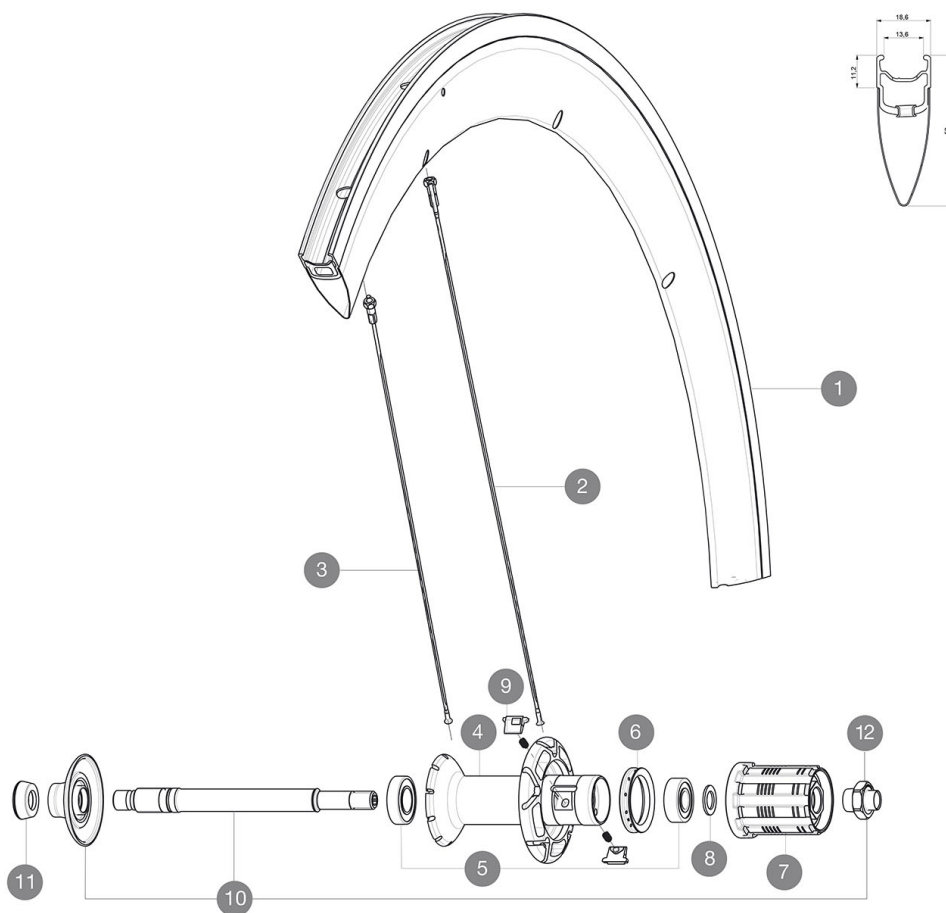


参照ホイール



RIMS



&NBSP;:

1	12017113	KIT REAR COSMIC CARBONE SL 11 RIM - while stock last
1	V4091613	KIT REAR RIM COSMIC CARBON SLS/COSMIC PRO CARBON V shaped

SPOKES

2	36644401	10 BLK AERO SPOKES DRIVE SIDE CC SLS 287mm
3	36644501	10 BLK AERO SPOKES FRONT/NON DRIVE SIDE CC SLS 289mm

HUB SHELLS

4	N/A	HUB BODY
5	33000001	REAR HUB B9+6901 BEARINGS 2013
6	99500001	FTSL/FTSX FREEHUB BODY SEAL
7	30872801	SET OF 3 INTERNAL SILVER SPACERS 9mm FTS-L 2013
8	30871101	FTS-L FREEWHEEL BODY HG11 2013 (8 or 9mm axle compatible)
8	30871201	FTS-L FREEWHEEL BODY ED11 2013 (8 or 9mm axle compatible)
9	M40578	FTSL PAWLS KIT (ROAD WHEELS)
10	V2250301	KIT REAR AXLE AERO HUB CXR/CC40/CC SLS/CC SLE/COSMIC PRO CARBON
12	V2373101	RIM NUT FOR ROAD ALLOY THROUGH AXLE 9mm

ADAPTERS

11	35117301	FRONT OR REAR FORK REST KIT R-SYS 2013
----	----------	--



Cosmic Carbone SLS

付属品

BR601 quick releases	
Multifonction adjustment wrench	
User guide	

Specifications

リム

- Material : Mxxtal and 12K carbon fiber
- Height : 52 mm
- Joint : SUP
- Drilling : traditional
- Brake track : UB Control
- Weight reduction : ISM
- Valve hole diameter : 6.5 mm
- Tyre : clincher
- ETRTO size : 622x13C
- Recommended tyre sizes : 19 to 28 mm

スポーク

- Material : steel
- Shape : straight pull, bladed
- Nipples : brass, ABS
- Count : front 16, rear 20
- Lacing : radial front and rear non-drive side, crossed 2 rear drive side

ホイールハブ

- Front and rear bodies : aluminum
- Axle material : aluminum
- Adjustable sealed cartridge bearings
- Freewheel : FTS-L steel

ホイールの重み

930