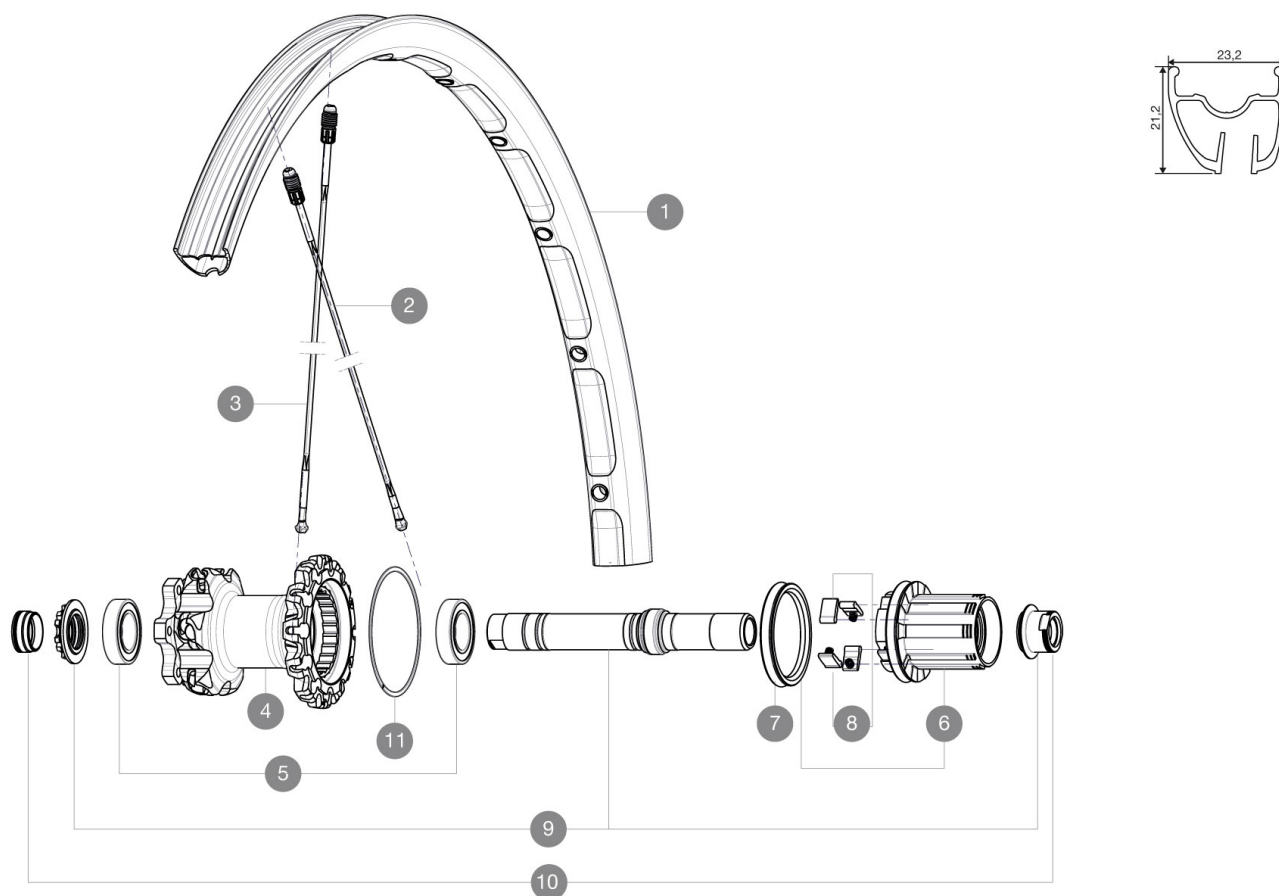


REFERENZEN RÄDER



RIMS



VENTILLOCH Å (MM): 6,5 :

| | | |
|---|----------|----------------------------|
| 1 | V2312113 | REAR CROSSMAX ST 27.5" RIM |
|---|----------|----------------------------|

SPOKES

| | | |
|---|----------|---|
| 2 | V2380201 | 10 DRIVE SIDE SPOKES CROSSMAX ST 27.5" |
| 3 | V2380301 | 10 OPPOSITE DRIVE SIDE SPOKES CROSSMAX ST 27.5" |

HUB SHELLS

| | | |
|----|----------|--|
| 4 | N/A | NABENKÖRPER |
| 5 | M40076 | HUB BEARINGS 17x30x7 6903 x 2 |
| 6 | 35126001 | ITS-4 FREEWHEEL BODY + SEAL 2013 (WITHOUT PAWLS) |
| 7 | 99610701 | ITS4 SEAL |
| 8 | 99610601 | ITS4 PAWLS KIT |
| 9 | 30870401 | REAR AXLE KIT ITS4 135mm D6T/DCL 2012 |
| 11 | 30871801 | ELASTIC RING 56mm diam. |

ADAPTERS

| | | |
|----|----------|--|
| 10 | 30872201 | FORK REST ITS-4 135mm REAR AXLE > 2012 |
|----|----------|--|

MAVIC Crossmax ST

GELIEFERT MIT

| | |
|---|--|
| Schnellspanner BX601 (HR) | |
| Schnellspanner BX601 (HR) | |
| UST-Ventil und Zubehör | |
| UST-Ventil und Zubehör | |
| 15-mm-Adapter (f $\frac{1}{4}$ r VR) | |
| 15-mm-Adapter (f $\frac{1}{4}$ r VR) | |
| 9,5-mm-Reduzierstück (f $\frac{1}{4}$ r HR) | |
| 9,5-mm-Reduzierstück (f $\frac{1}{4}$ r HR) | |
| 12x142-mm-Adapter (f $\frac{1}{4}$ r HR) | |
| 12x142-mm-Adapter (f $\frac{1}{4}$ r HR) | |
| Disc-Befestigungsschrauben | |
| Disc-Befestigungsschrauben | |
| Speichenmagnet (beim VR) | |
| Speichenmagnet (beim VR) | |
| Multifunktions-Einstellschüssel | |
| Multifunktions-Einstellschüssel | |
| Bedienungsanleitung | |
| Bedienungsanleitung | |