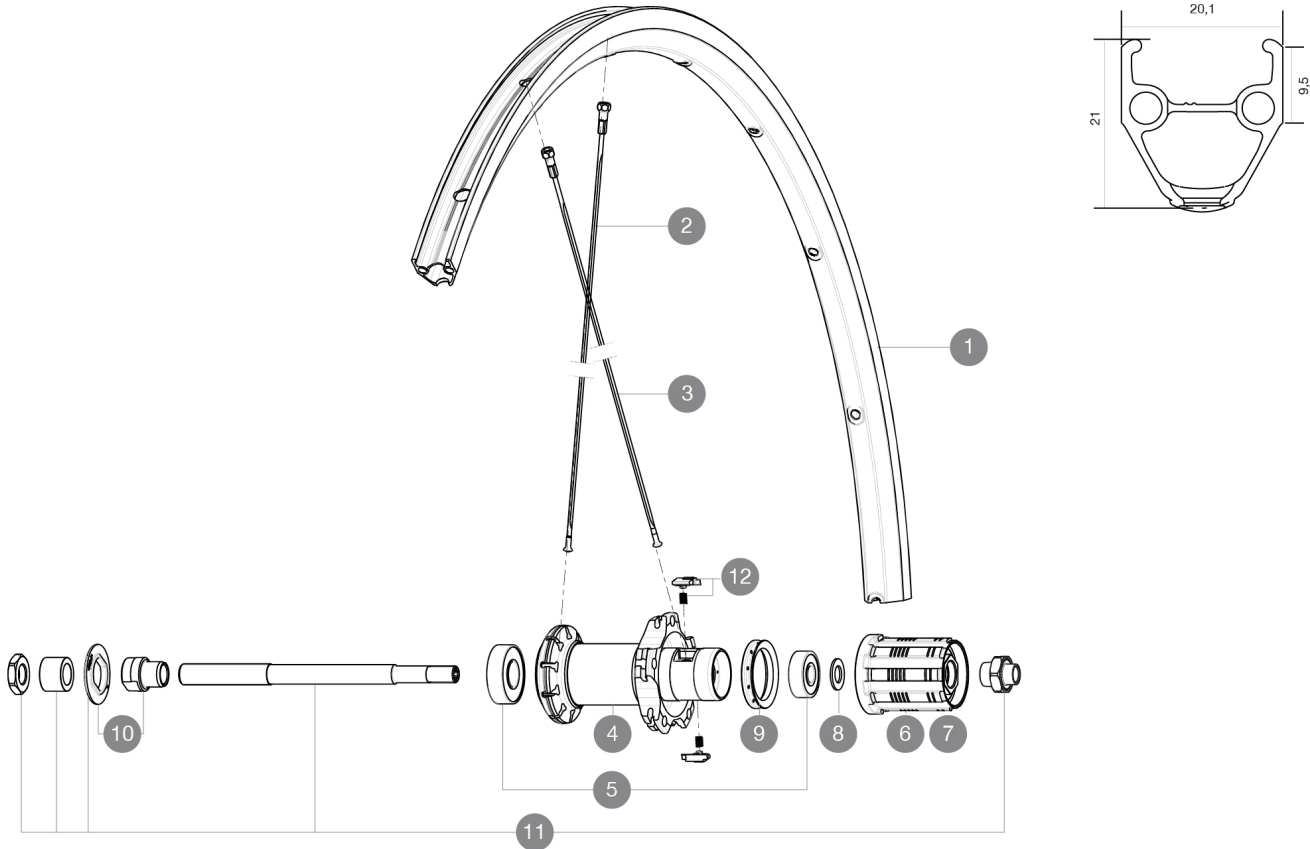


ASTM CATEGORY 1 : road only  
 Maximum tyre pressure: 2.55bar/37PSI with a 54mm tyre - 1.3bar/19PSI with a 125mm tyre  
 Recommended weight limit : 120kg  
 Recommended tyre sizes: 25 to 52 mm  
 Max. Pressure: 23mm 8.7 bars - 125 psi, 25/28mm 7.7 bars - 110 psi  
 Maximum tyre size: width 52mm - pressure max. 5Bar/72PSI

REFERENCES WHEELS

R72801    Aksium Rr



RIMS



|   |          |                           |
|---|----------|---------------------------|
| 1 | V2403015 | KIT FRONT/REAR RIM AKSIUM |
|---|----------|---------------------------|

SPOKES

|   |          |  |
|---|----------|--|
| 2 | 10844901 | KIT 10 FT KSYRIUM EQ S/FT+NDS AKSIUM SPK 285mm - while stock |
| 2 | V4160101 | Kit 10 stainless spokes 285 Ft Ksyrium Equipe S/Ft & NDS Aks |
| 3 | 10845001 | KIT 10 DS AKSIUM STEEL AERO SPOKES 299mm                     |

HUB SHELLS

|    |          |   |
|----|----------|---|
| 5  | M40660   | REAR HUB 608+6001 BEARINGS                    |
| 6  | 30871101 | FTS-L ROAD FREEWHEEL BODY HG11 8/9 compatible |
| 7  | 30871201 | FTS-L ROAD FREEWHEEL BODY ED11 8/9 compatible |
| 8  | M40067   | INTERNAL FREEWHEEL SPACER FTSL/FTSX           |
| 9  | 99500001 | FTSL/FTSX FREEHUB BODY SEAL                   |
| 10 | 99603801 | SHORT EXPENSIBLE BEARING SUPPORTS > 2008      |
| 11 | 99603901 | REAR AXLE QRM ROAD 2008                       |
| 12 | M40578   | FTSL PAWLS KIT (ROAD WHEELS)                  |



DELIVERED WITH

|                                    |  |
|------------------------------------|--|
| BR101 quick releases               |  |
| Rim tape                           |  |
| BR101 quick releases               |  |
| BR101 quick releases               |  |
| BR101 quick releases               |  |
| BR101 quick releases               |  |
| BR101 quick releases               |  |
| BR101 quick releases               |  |
| BR101 quick releases               |  |
| User guide                         |  |
| Rim tape                           |  |
| Rim tape                           |  |
| Rear QR adapters (non-boost wheel) |  |
| Rim tape                           |  |
| Rim tape                           |  |
| Rim tape                           |  |
| Rim tape                           |  |
| User guide                         |  |
| User guide                         |  |

COMPATIBILITY

|  |  |
|--|--|
| Freewheel: Shimano/Sram, convertible to Campagnolo with optional driver body                           |  |
| Freewheel: Shimano/Sram, convertible to Campagnolo with optional driver body                           |  |
| Freewheel: Shimano/Sram, convertible to Campagnolo with optional driver body                           |  |
| Freewheel: Shimano/Sram, convertible to Campagnolo with optional driver body                           |  |
| Freewheel: Shimano/Sram, convertible to Campagnolo with optional driver body                           |  |
| Front axle: Quick Release only   |  |
| Front axle: Quick Release only   |  |
| Front axle: Quick Release only   |  |
| Front axle: Quick Release only   |  |
| Front axle: Quick Release only   |  |
| Front axle: Quick Release only   |  |
| Freewheel body: convertible CAMPAGNOLO ED11 (kit 30871201 sold separately)                             |  |
| Rear axle: Quick Release only  |  |
| Rear axle: Quick Release only  |  |
| Rear axle: Quick Release only  |  |
| Rear axle: Quick Release only  |  |
| Rear axle: Quick Release only  |  |
| Front axle: Quick Release only   |  |
| Rear axle: 12mm thru axle, convertible to Quick Release with adapters (delivered with non-boost wheel) |  |