

ASTM CATEGORY 1 : road only

For a longer longevity of the wheel, Mavic recommends that the total weight supported by the wheels doesn't exceed 120kg, bike included

Recommended tyre sizes: 21 to 32 mm

21 to 32 mm

23mm 8.7 bars - 125 psi, 25mm 7.7 bars - 110 psi

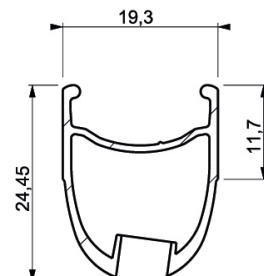
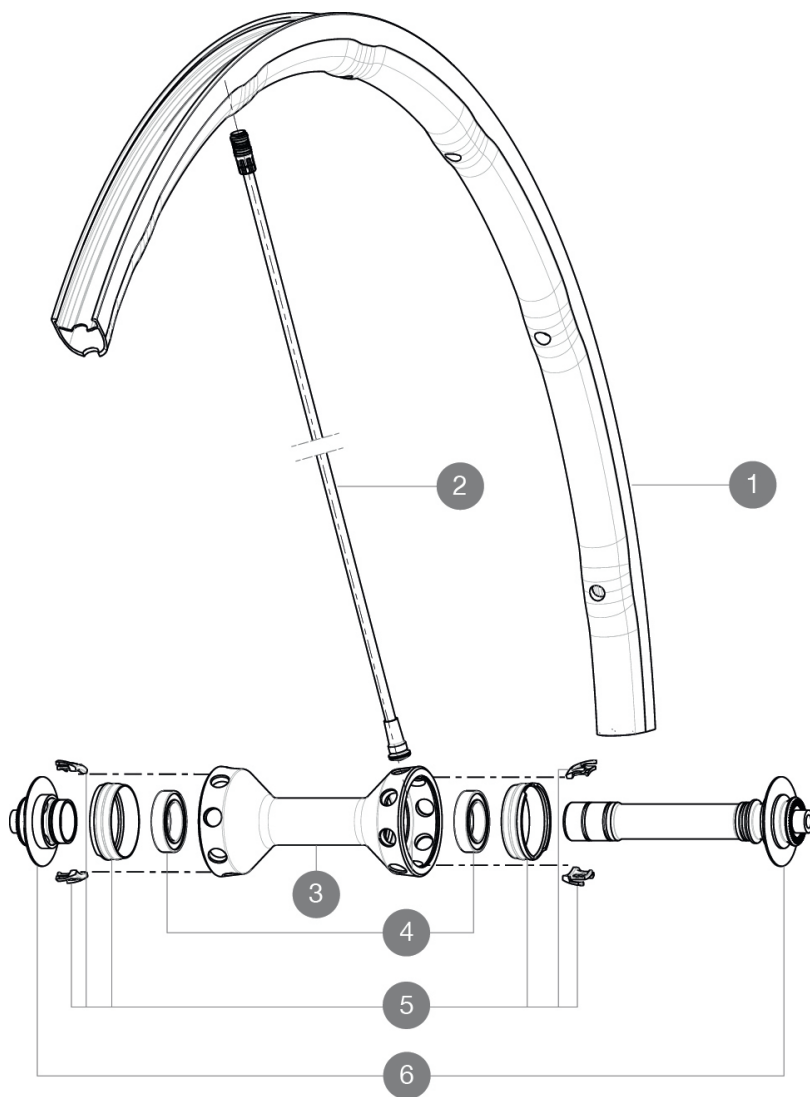
Max. Pressure: 25mm 7.7 bars - 110 PSI

参照ホイール

F34201 R-Sys SLR16Ft

F70891

R-Sys SLR Ft Limited



RIMS



バルブ穴径 (MM) : 6.5 :

| | | |
|---|----------|------------------------------|
| 1 | A7199710 | KIT FRONT RIM R-SYS SLR 2015 |
| 1 | V2405310 | Kit Frt Rim R-SysSLR Ltd |

SPOKES

| | | |
|---|----------|--|
| 2 | V4161301 | Kit 10 front/rear Rsys spokes 282,7mm from 2020 |
| 2 | V2270201 | R-SYS SLR 15 CARB TUB SPOKE 282,7mm - while stock last |
| 2 | V2273001 | Kit 2 Spokes 282.7 R-SysSLRLtd |
| 5 | 99693801 | 2 SILVER TRACOMP RINGS + CLIPS |

HUB SHELLS

| | | |
|---|----------|----------------------------|
| 3 | N/A | HUB BODY |
| 4 | 10567901 | BEARING KIT R-SYS SL FRONT |
| 6 | 10846901 | FRONT AXLE KIT R-SYS SL |



R-Sys SLR

付属品

| | |
|---------------------------------|--|
| BR601 quick releases | |
| BR601 quick releases | |
| BR601 quick releases | |
| BR601 quick releases | |
| BR601 quick releases | |
| Exalith brake pads | |
| Exalith brake pads | |
| Exalith brake pads | |
| Exalith brake pads | |
| Exalith brake pads | |
| Computer magnet (front wheel) | |
| Exalith brake pads | |
| Multifonction adjustment wrench | |
| Tracomp ring tool | |
| Computer magnet (front wheel) | |
| Computer magnet (front wheel) | |
| Computer magnet (front wheel) | |
| Computer magnet (front wheel) | |
| User guide | |

COMPATIBILITY

| | |
|--|--|
| Freewheel: Shimano/Sram, convertible to Campagnolo with optional driver body | |
| Freewheel: Shimano/Sram, convertible to Campagnolo with optional driver body | |
| Freewheel: Shimano/Sram, convertible to Campagnolo with optional driver body | |
| Freewheel: Shimano/Sram, convertible to Campagnolo with optional driver body | |
| Front axle: Quick Release only | |
| Front axle: Quick Release only | |
| Front axle: Quick Release only | |
| Front axle: Quick Release only | |
| Rear axle: Quick Release only | |
| Rear axle: Quick Release only | |
| Rear axle: Quick Release only | |
| Rear axle: Quick Release only | |