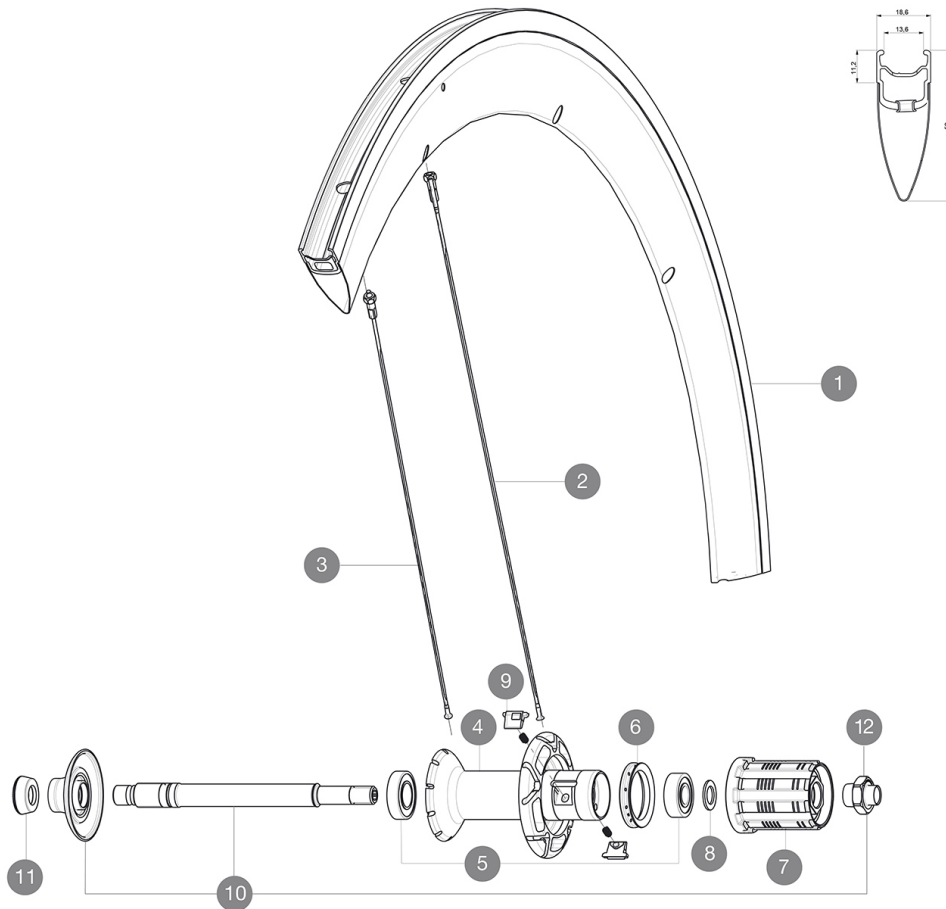


MAVIC *Cosmic Pro Carbon Exalith*

ASTM CATEGORY 1 : road only
Recommended weight limit : 120kg

REFERENCES WHEELS

R57901 CosProCarbExalitRr

**RIMS**VALVE HOLE \bar{A} (MM): 6,5 :

1	V4091713	KIT REAR RIM COSMIC CARBON SLE/COSMIC PRO CARBON EXALITH V s
1	V2404613	KIT REAR RIM COSMIC PRO CARBON EXALITH - while stock last

SPOKES

2	32976801	KIT 10 AERO FT/NDS CXR 60 C BLK SPOKE 289mm
2	32979201	10 BLK FR/NDRV SPOKES CC SLE CLINCHER 2013 288mm - while sto
3	32979101	KIT 10 DS COSMIC CARB SLE C 13 BLK SPK 286mm

HUB SHELLS

4	N/A	HUB BODY
5	33000001	REAR HUB B9+6901 BEARINGS 2013
6	99500001	FTSL/FTSX FREEHUB BODY SEAL
7	30871201	FTS-L ROAD FREEWHEEL BODY ED11 8/9 compatible
7	30871101	FTS-L ROAD FREEWHEEL BODY HG11 8/9 compatible
8	30872801	SET OF 3 INTERNAL SILVER SPACERS 9mm FTS-L
9	M40578	FTSL PAWLS KIT (ROAD WHEELS)
10	V2250301	KIT REAR AXLE AERO HUB CXR/CC40/CC SLS/CC SLE/COSMIC PRO CAR
12	V2373101	KIT NUT FOR ROAD ALLOY THROUGH AXLE 9mm

ADAPTERS

11	35117301	FT/RR FORK REST R-SYS/CC ULTIMATE > 2013/KSY PRO CARB T
----	----------	---

MAVIC Cosmic Pro Carbon Exalith

DELIVERED WITH

BR601 quick releases	
Rim tape	
Exalith brake pads	
Multifonction adjustment wrench	
User guide	

Specifications

RIMS

- **Material** : Maxtal and 12K carbon fiber
- **Height** : 52 mm
- **Joint** : SUP
- **Drilling** : traditional
- **Brake track** : Exalith 2
- **Weight reduction** : ISM
- **Valve hole diameter** : 6.5 mm
- **Tyre** : clincher
- **ETRTO size** : 622x13C
- **Recommended tyre sizes** : 21 to 28 mm

SPOKES

- **Material** : steel
- **Shape** : straight pull, bladed, double butted
- **Nipples** : front aluminum, rear brass, ABS
- **Count** : front 16, rear 20
- **Lacing** : radial front and rear non-drive side, crossed 2 rear drive side

WHEEL HUB

- **Front and rear bodies** : aluminum
 - **Axle material** : aluminum
- Adjustable sealed cartridge bearings
- **Freewheel** : FTS-L steel

WHEEL WEIGHTS

Wheel weight 890