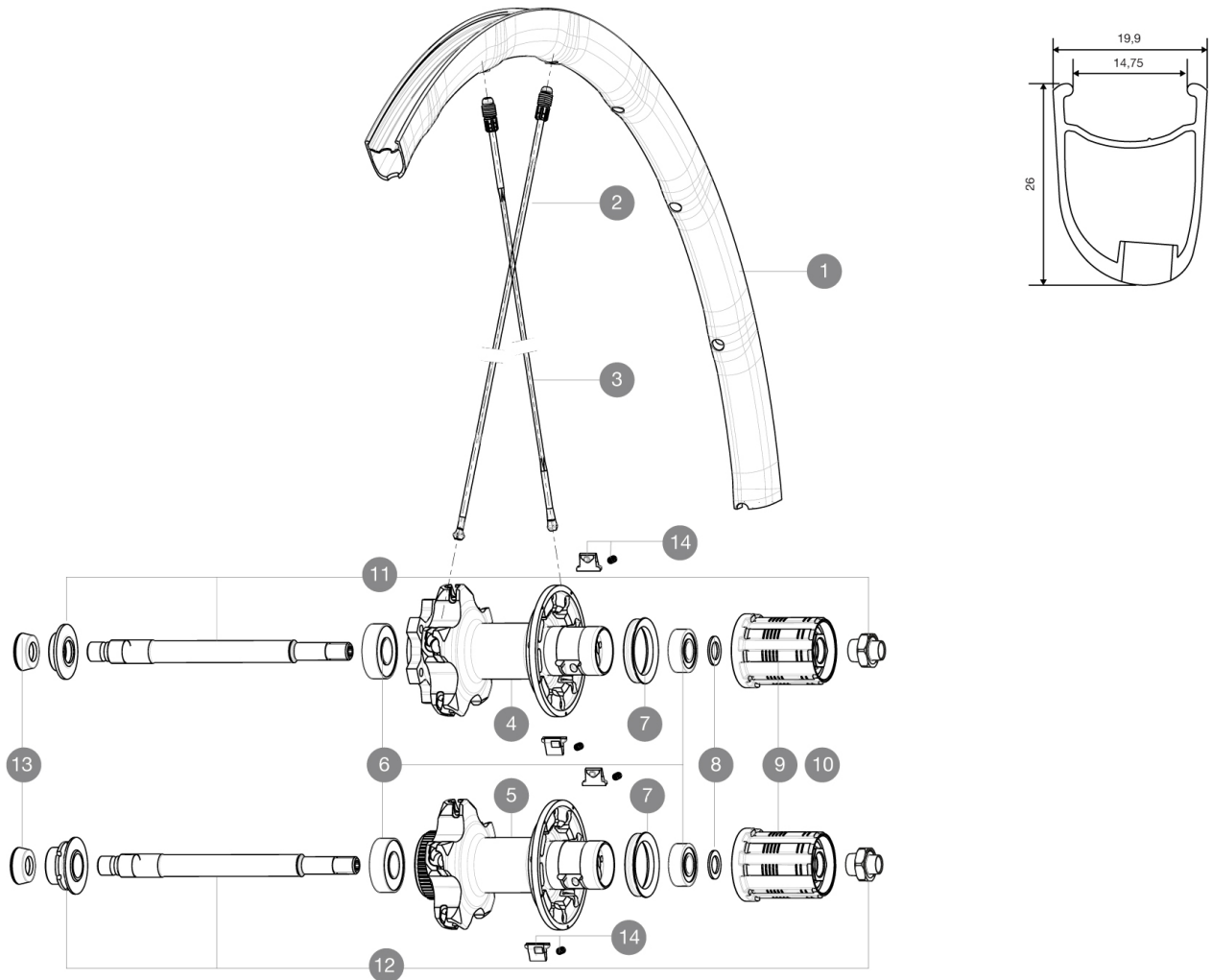


ASTM CATEGORY 2 : road and offroad with jumps less than 15cm  
Recommended weight limit : 120kg

## REFERENCES WHEELS

R58601 KsyProDisc16 CLRr      R58401 KsyProDisc16 INTRr



### RIMS



VALVE HOLE  $\bar{A}$  (MM): 6,5 :

1 V2290613 KIT REAR RIM KSYRIUM PRO DISC

### ADAPTERS

13 35117301 FT/RR FORK REST R-SYS/CC ULTIMATE > 2013/KSY PRO CARB T

### SPOKES

2 12029401 KIT 10 DS R-SYS SL/SLR CLINC BLK SPK 294,5mm  
3 V2270501 KIT 12 DS KSY PRO/PRO DISC/SL C/PRO EXA SPK 273,5mm

### HUB SHELLS

4	N/A	HUB BODY
5	N/A	HUB BODY
6	V2540101	REAR HUB B9+6001 BEARINGS 2015
7	99500001	FTSL/FTSX FREEHUB BODY SEAL
8	30872801	SET OF 3 INTERNAL SILVER SPACERS 9mm FTS-L
9	30871101	FTS-L ROAD FREEWHEEL BODY HG11 8/9 compatible
10	30871201	FTS-L ROAD FREEWHEEL BODY ED11 8/9 compatible
11	V2250601	KIT REAR AXLE KSYRIUM PRO DISC 6T
12	V2250401	KIT REAR AXLE KSYRIUM PRO DISC CL
14	M40578	FTSL PAWLS KIT (ROAD WHEELS)

# MAVIC Ksyrium Pro Disc

## DELIVERED WITH

BX601 quick releases	
Front 12 mm adapters	
Rear QR adapters	
Specific disc bolts	
Multifonction adjustment wrench	
User guide	

## Specifications

### RIMS

- **Material** : Mxtral
  - **Height** : 26mm, asymmetrical
  - **Joint** : SUP
  - **Drilling** : Fore
- Disc brake specific profile
- **Weight reduction** : ISM 4D
  - **Valve hole diameter** : 6.5 mm
  - **Tyre** : clincher
  - **ETRTO size** : 622x15C
  - **Recommended tyre sizes** : 23 to 32 mm

### SPOKES

- **Material** : Zicral
- **Shape** : straight pull, bladed
- **Nipples** : Fore integrated aluminum
- **Count** : 20 front and rear
- **Lacing** : front crossed 2, rear Isopulse

### WHEEL HUB

- **Front body** : carbon with aluminum flanges
  - **Rear body** : aluminum
  - **Axle material** : aluminum
- Adjustable sealed cartridge bearings
- **Freewheel** : FTS-L steel
  - **Front** : Quick release, 12 thru and 15 thru compatible

### WHEEL WEIGHTS

Wheel weight 855