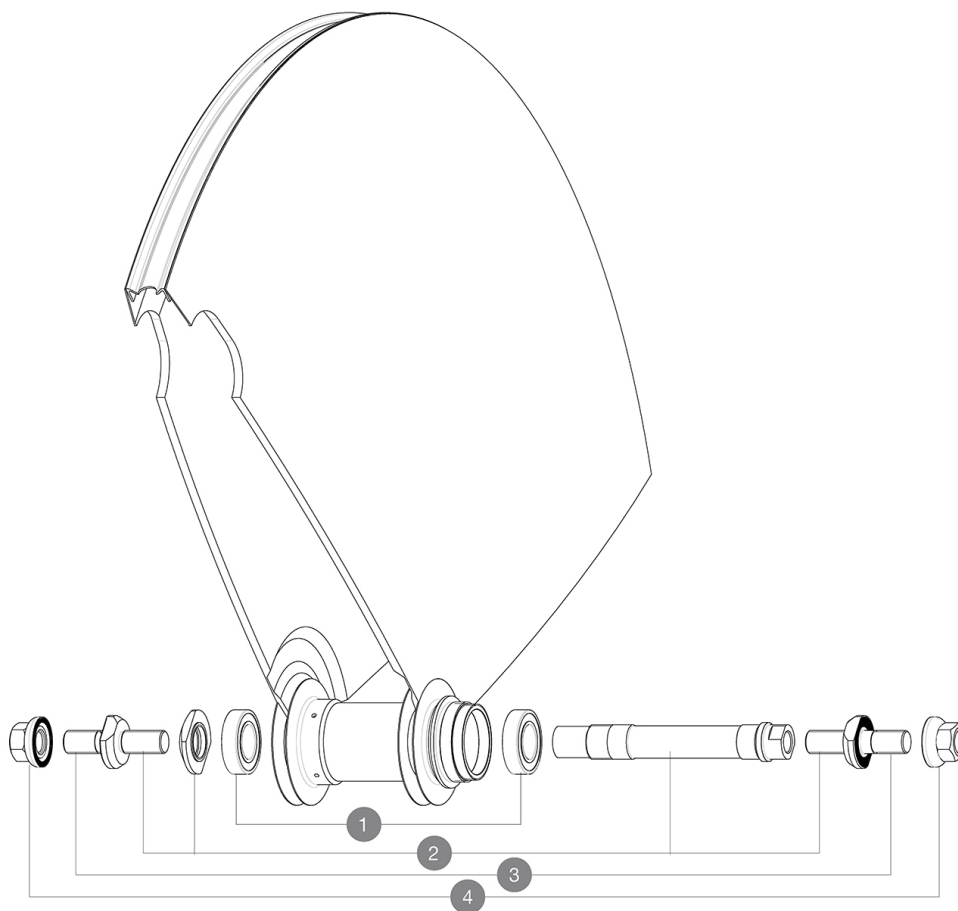


ASTM CATEGORY 1 : road only  
 Recommended weight limit : 120kg  
 Recommended tyre sizes: 21 to 28 mm  
 Max. Pressure: see indication on wheel and tyre. If they differ, use the lower of the 2  
 Max. Pressure: 23mm 8.7 bars - 125 psi  
 Minimum cog width : 7.5mm  
 Minimum cog width : 7.5mm

## REFERENCES WHEELS

R56601	CometeTrack16Rr	R99351	COMETE TRACK T 700
--------	-----------------	--------	--------------------



## HUB SHELLS

1	M40129	KIT 2 BEARINGS 6902 15x28x7
2	M40128	REAR COMETE TRACK AXLE + ADJT.NUT + FORK SUPPORTS
3	V2390101	KIT OF 2 END BOLTS AXLE PART FOR COMETE TRACK
4	M40772	NUT/WASHER KIT TRACK R.COMETE

## OPTIONS

V00034231	Kit XL axle bolts for rear Comet Track
-----------	--

# MAVIC **COMETE TRACK**

## DELIVERED WITH

Fixing nuts	
Wheelbag	
Valve extender	
Fixing nuts	
Fixing nuts	
Fixing nuts	
Fixing nuts	
Fixing nuts	
Cog lock nut	
Fixing nuts	
Fixing nuts	
User guide	
Valve extender	
Valve extender	
Valve extender	
Valve extender	
Valve extender	
Valve extender	
Valve extender	
Valve extender	
Valve extender	

## COMPATIBILITY

ID360 Shimano / Sram Light freewheel body (V3850101)	
ID360 XD-R freewheel body (V2580101)	
FTS-L Shimano / Sram freewheel body ([30871101] - Delivered on the wheel)	