

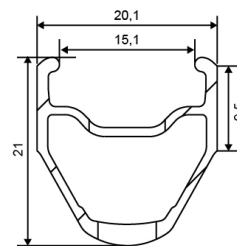
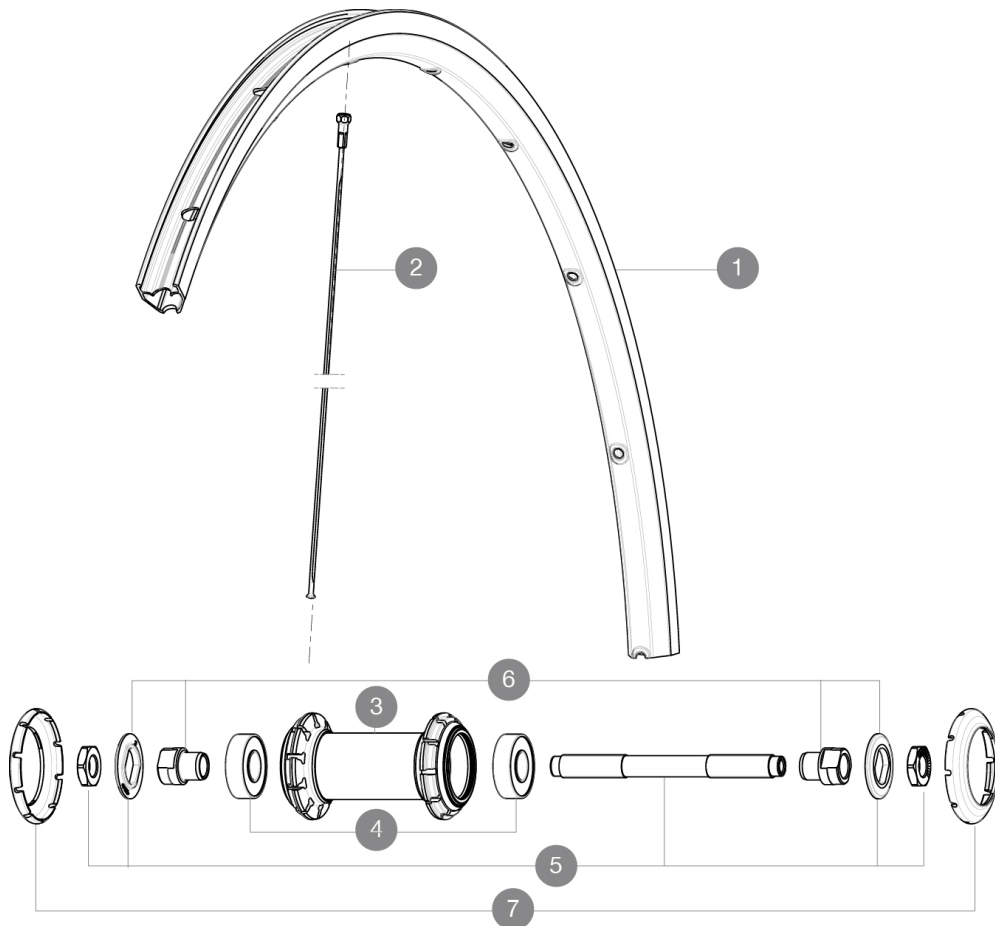
ASTM CATEGORY 1 : road only

For a longer longevity of the wheel, Mavic recommends that the total weight supported by the wheels doesn't exceed 120kg, bike included

参照ホイール

F35401 Ksyrium Ft Black

F35402 Ksyrium Ft Red



RIMS



バルブ穴径 (MM) : 6,5 :

1	12021415	FRONT/REAR BLACK KSYRIUM EQUIPE 11 RIM
1	V2402815	RIM KSYRIUM RED

SPOKES

2	12031201	10 BLACK FRONT SPOKES KSYRIUM EQUIPE 11 282mm
---	----------	---

HUB SHELLS

4	M40318	HUB BEARING KIT 6001
5	99603701	FRONT AXLE QRM ROAD 2008
6	99603801	SHORT EXPENSIBLE BEARING SUPPORTS > 2008
7	12034401	KIT 3 HUB CAPS AERO 10 SLOTS BLACK



Ksyrium

付属品

BR101 quick releases	
Rim tape	
User guide	

Specifications

リム

- Material : S6000 Aluminum
- Height : 25mm
- Joint : SUP
- Drilling : traditional with H2 reinforcement
- Brake track : UB Control
- Valve hole diameter : 6.5 mm
- Tyre : clincher
- ETRTO size : 622x15C
- Recommended tyre sizes : 21 to 32 mm

スポーク

- Material : steel
- Shape : straight pull, bladed
- Nipples : brass, ABS
- Count : 20 front and rear
- Lacing : front radial, rear Isopulse

ホイールハブ

- Front and rear bodies : aluminum
- Axle material : steel
- Sealed cartridge bearings
- Freewheel : FTS-L steel

ホイールの重み

ホイール重量 (クイックリリースおよびクリンチャー/チューブラーを除く) (g) : 770