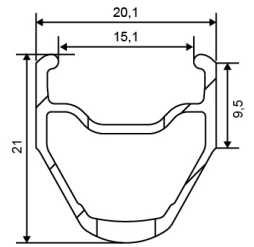
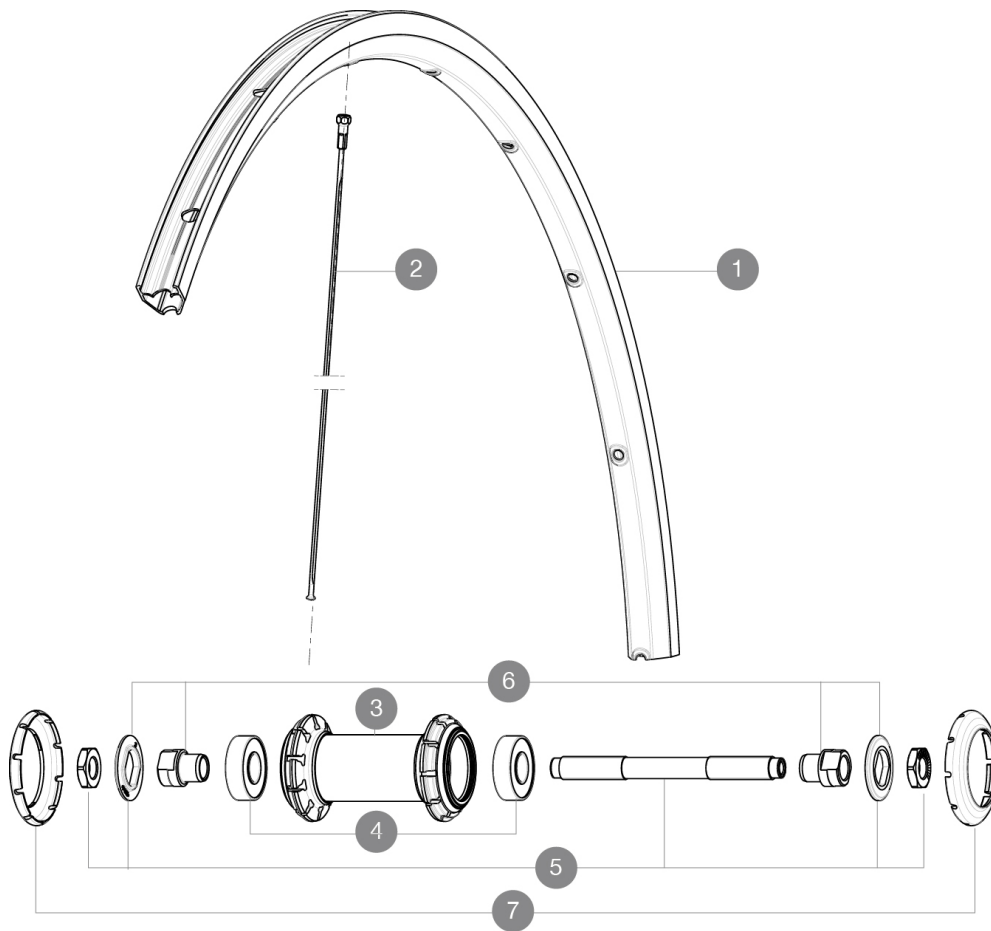


ASTM CATEGORY 1 : road only  
Recommended weight limit : 120kg

## REFERENCES WHEELS

F35401	Ksyrium Ft Black	F35402	Ksyrium Ft Red
--------	------------------	--------	----------------



## RIMS



VALVE HOLE  $\bar{A}$  (MM): 6,5 :

1	V2402815	KIT FRONT/REAR RIM KSYRIUM RED
1	12021415	KIT FRONT/REAR BLACK KSYRIUM EQUIPE S RIM

## SPOKES

2	12031201	10 BLACK FRONT SPOKES KSYRIUM EQUIPE 11 282mm
---	----------	---

## HUB SHELLS

4	M40318	KIT 2 HUB BEARINGS 6001
5	99603701	FRONT AXLE QRM ROAD 2008
6	99603801	SHORT EXPENSIBLE BEARING SUPPORTS > 2008
7	12034401	KIT 3 HUB CAPS AERO 10 SLOTS BLACK

# MAVIC Ksyrium

## DELIVERED WITH

BR101 quick releases	
Rim tape	
User guide	

## Specifications

### RIMS

- **Material** : S6000 Aluminum
- **Height** : 25mm
- **Joint** : SUP
- **Drilling** : traditional with H2 reinforcement
- **Brake track** : UB Control
- **Valve hole diameter** : 6.5 mm
- **Tyre** : clincher
- **ETRTO size** : 622x15C
- **Recommended tyre sizes** : 23 to 32 mm

### SPOKES

- **Material** : steel
- **Shape** : straight pull, bladed
- **Nipples** : brass, ABS
- **Count** : 20 front and rear
- **Lacing** : front radial, rear Isopulse

### WHEEL HUB

- **Front and rear bodies** : aluminum
- **Axle material** : steel
- Sealed cartridge bearings
- **Freewheel** : FTS-L steel

### WHEEL WEIGHTS

Wheel weight 770