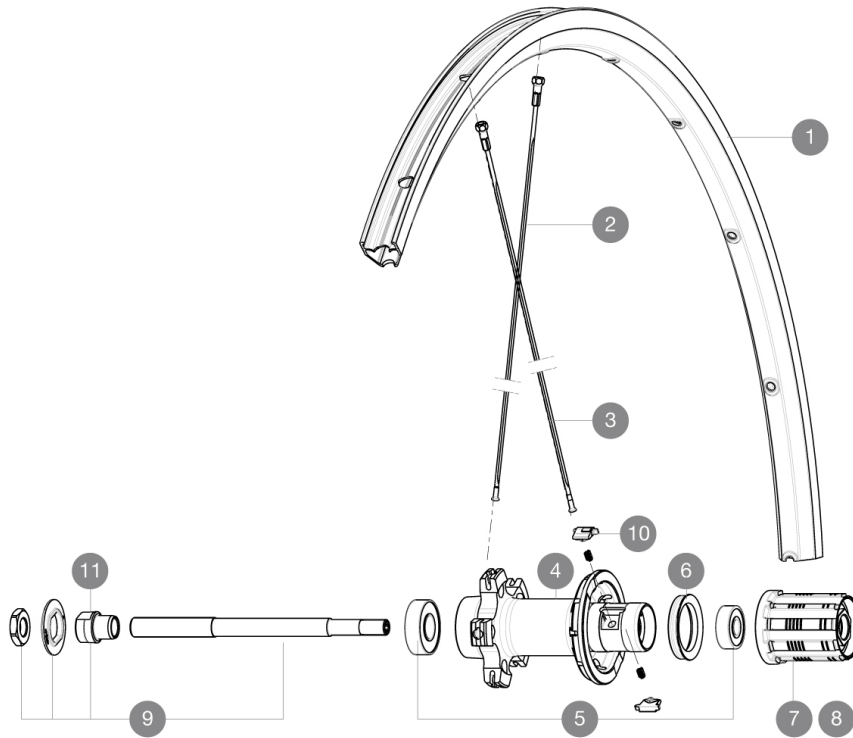


ASTM CATEGORY 1 : road only
Recommended weight limit : 120kg

REFERENCES WHEELS

R59401 Ksyrium Rr Black

R59402 Ksyrium Rr Red



RIMS



VALVE HOLE \bar{A} (MM): 6,5 :

1	V2402815	KIT FRONT/REAR RIM KSYRIUM RED
1	12021415	KIT FRONT/REAR BLACK KSYRIUM EQUIPE S RIM

SPOKES

2	12031401	KIT 10 NDS KSYRIUM EQUIPE 11/EQUIPE S BLK SPK 301mm
3	12031301	KIT 10 DS KSYRIUM EQUIPE 11/EQUIPE S BLK SPOKE 278mm

HUB SHELLS

5	M40660	REAR HUB 608+6001 BEARINGS
6	99500001	FTSL/FTSX FREEHUB BODY SEAL
7	30871101	FTS-L ROAD FREEWHEEL BODY HG11 8/9 compatible
8	30871201	FTS-L ROAD FREEWHEEL BODY ED11 8/9 compatible
9	99603901	REAR AXLE QRM ROAD 2008
10	M40578	FTSL PAWLS KIT (ROAD WHEELS)
11	99603801	SHORT EXPENSIBLE BEARING SUPPORTS > 2008

MAVIC Ksyrium

DELIVERED WITH

BR101 quick releases	
Rim tape	
User guide	

Specifications

RIMS

- **Material** : S6000 Aluminum
- **Height** : 25mm
- **Joint** : SUP
- **Drilling** : traditional with H2 reinforcement
- **Brake track** : UB Control
- **Valve hole diameter** : 6.5 mm
- **Tyre** : clincher
- **ETRTO size** : 622x15C
- **Recommended tyre sizes** : 23 to 32 mm

SPOKES

- **Material** : steel
- **Shape** : straight pull, bladed
- **Nipples** : brass, ABS
- **Count** : 20 front and rear
- **Lacing** : front radial, rear Isopulse

WHEEL HUB

- **Front and rear bodies** : aluminum
- **Axle material** : steel
- Sealed cartridge bearings
- **Freewheel** : FTS-L steel

WHEEL WEIGHTS

Wheel weight 920