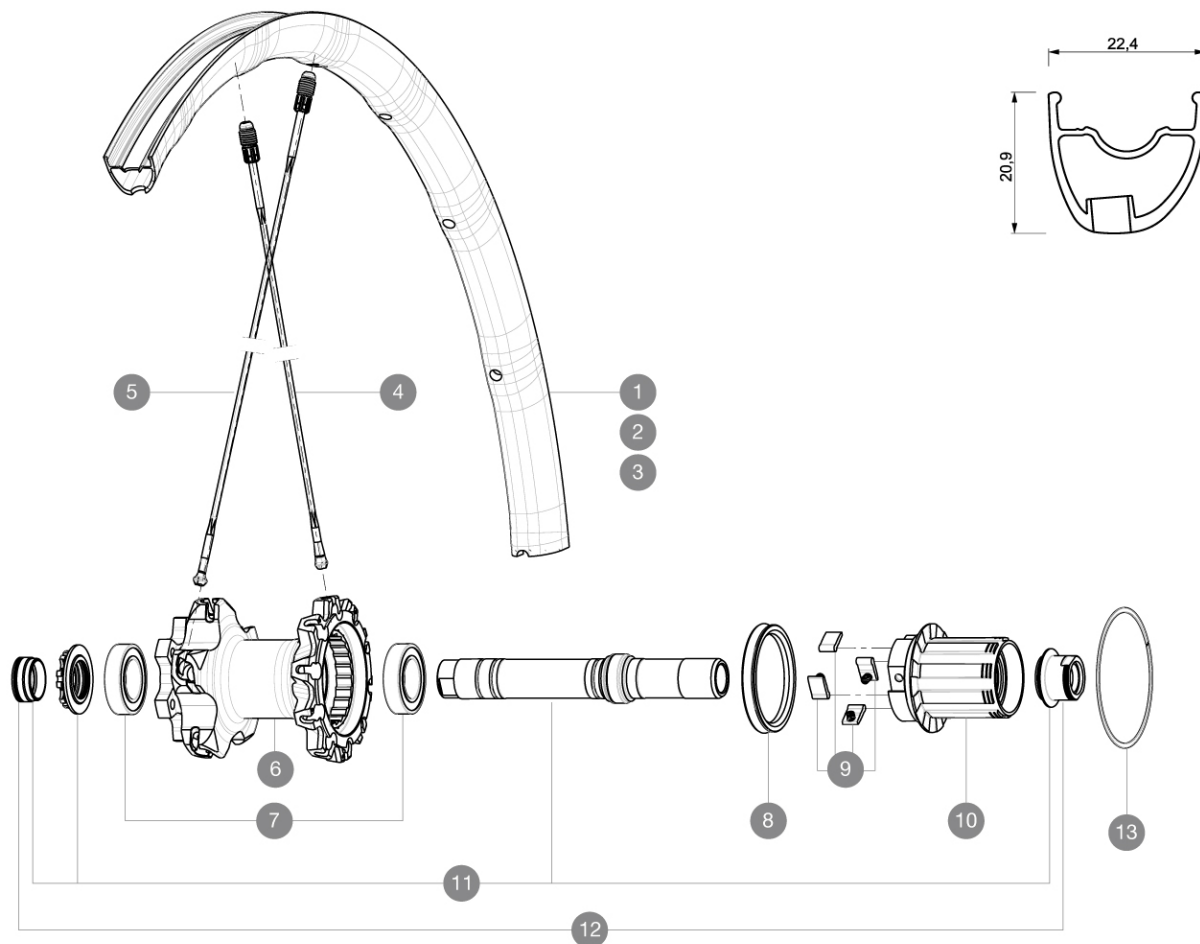


ASTM CATEGORY 3 : offroad with jumps less than 61cm  
Recommended weight limit : 120kg

### REFERENCES WHEELS

R68801	XmaxSLPro27.5OffsetRrWTSBk	R78402	XmaxSLProLtd27.5RrXD WTS YE
R68802	XmaxSLProLtd27.5OffsetWTSYel	R51702	XmaxSLProLtd27.5RrWTSYel
R75201	XmSLProLtd27.5OffsetNT135	R51701	XmaxSLPro27.5RrWTS Black
R78401	XmaxSLPro27.5RrXD WTS BK	R82601	XmaxSLPro27.5RrNT Bk



### RIMS



VALVE HOLE (MM): 6,5 :

1	V2313213	"KIT RR RIM CROSSMAX SL PRO LTD OFFS YEL 27,5""
2	V2313113	"KIT REAR RIM CROSSMAX SL PRO LTD YELL 27,5""
3	V2310513	KIT REAR RIM CROSSMAX SL/SL PRO BLACK 27.5"

### SPOKES

4	36675101	"KIT 10 DS XMAX SLR/END/PRO/DEEMAX PRO 27,5"" SPK 251,5mm"
5	36675001	"KIT 10 NDS XMAX SLR/ENDURO 27,5"" ALU SPK 281,5mm"

### HUB SHELLS

6	N/A	HUB BODY
7	M40076	HUB BEARINGS 17x30x7 6903 x 2
8	99610701	ITS-4 FREEWHEEL SEAL
9	99610601	PAWLS KIT FOR ITS-4 (OR TS-2)
10	35126001	ITS-4 FREEWHEEL BODY + SEAL 2013 (NO PAWLS)
11	30870401	REAR QRM + AXLE KIT ITS4 135mm from 2012
13	30871801	ELASTIC RING 56mm diam. ITS-4 20 SPOKES

### ADAPTERS

12	30872201	FRAME SUPPORT ITS-4 135mm REAR AXLE > 2012
----	----------	--

**MAVIC** *Crossmax SL Pro WTS 27.5***DELIVERED WITH**

BX601 quick releases	
1 bottle of Mavic Sealant	
UST valve and accessories	
Front QR adapters	
Rear QR adapters	
Rear 12x142mm adapters	
Multifonction adjustment wrench	

**Specifications****RIMS**

- **Material** : Maxtal
  - **Joint** : SUP
  - **Drilling** : Fore
- Disc brake specific profile
- **Weight reduction** : ISM 4D
  - **Valve hole diameter** : 6.5 mm
  - **Tyre** : UST Tubeless and tubetype
  - **Internal width** : 19 mm
  - **ETRTO size 26"** : 559x19C
  - **ETRTO size 650b/27.5"** : 584x19C
  - **ETRTO size 29"** : 622x19C
  - **ETRTO recommended tyre sizes** : 28mm to 62mm (1.1" to 2.5")

**SPOKES**

- **Material** : Zicral
- **Shape** : straight pull, bladed
- **Nipples** : Fore integrated aluminum
- **Count** : 20 front and rear
- **Lacing** : front crossed 2, rear Isopulse

**WHEEL HUB**

- **Front body** : carbon with aluminum flanges
- Adjustable sealed cartridge bearings
- **Freewheel** : ITS-4 alloy
- Shimano 11 speeds compatible  
Sram XD Compatible (XX1-X01) with optional kit

**WHEEL WEIGHTS**

Wheel weight  
Weight Rear 26" : 760  
Weight Rear 27.5" : 805  
Weight Rear 29" : 830