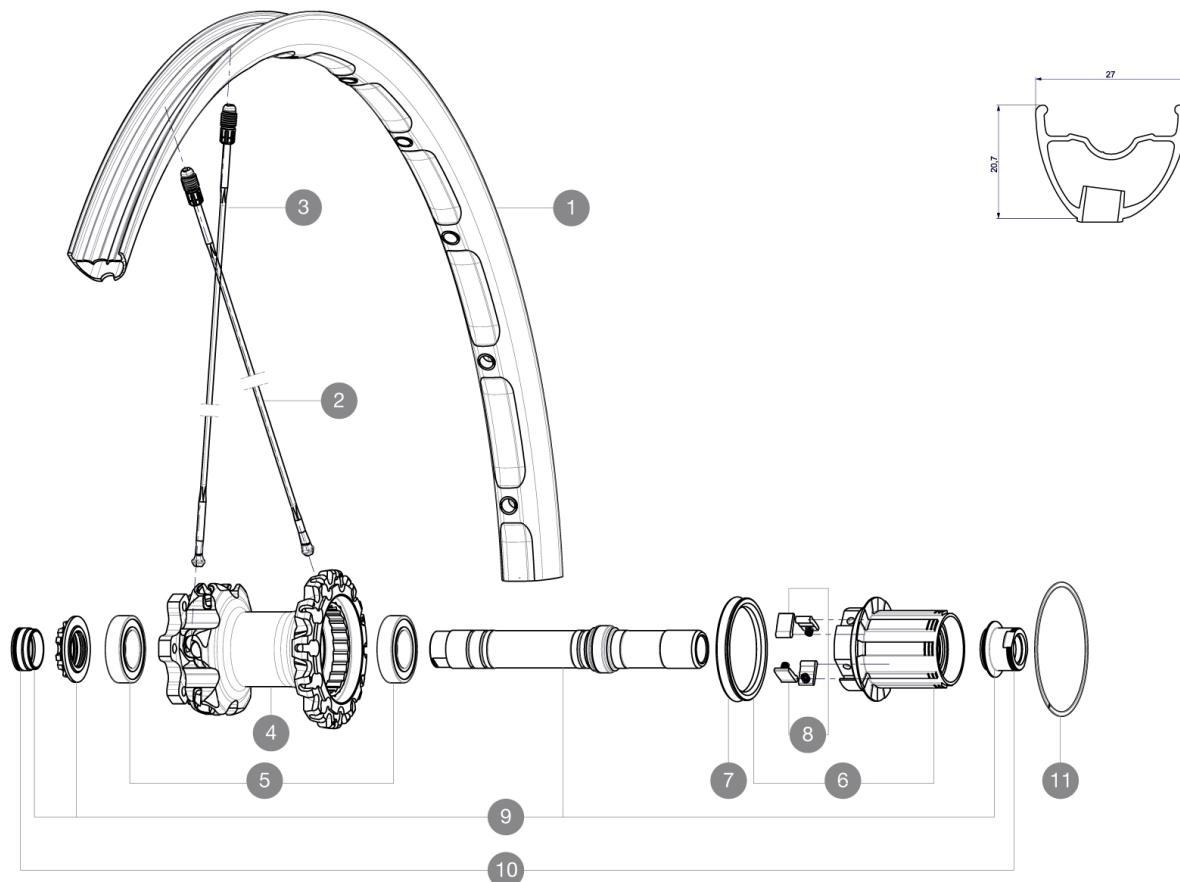


MAVIC Crossmax XL pro Ltd 27.5 WTS

1
2016
REAR

Recommended weight limit : 120kg

REFERENCES WHEELS



RIMS



VALVE HOLE (MM): 6,5 :

| | | |
|---|----------|--|
| 1 | V2314013 | "KIT REAR RIM CROSSMAX XL PRO LTD 27,5"" |
|---|----------|--|

SPOKES

| | | |
|---|----------|--|
| 2 | 36675101 | "KIT 10 DS XMAX SLR/END/PRO/DEEMAX PRO 27,5"" SPK 251,5mm" |
| 3 | 36674901 | KIT 12 FT XMAX END/FT-NDS DEEMAX PRO 27,5" ALU SPK 275mm |

HUB SHELLS

| | | |
|----|----------|---|
| 4 | N/A | HUB BODY |
| 5 | M40076 | HUB BEARINGS 17x30x7 6903 x 2 |
| 6 | 35126001 | ITS-4 FREEWHEEL BODY + SEAL 2013 (NO PAWLS) |
| 7 | 99610701 | ITS-4 FREEWHEEL SEAL |
| 8 | 99610601 | PAWLS KIT FOR ITS-4 (OR TS-2) |
| 9 | 30870401 | REAR QRM + AXLE KIT ITS4 135mm from 2012 |
| 11 | 30871801 | ELASTIC RING 56mm diam. ITS-4 20 SPOKES |

ADAPTERS

| | | |
|----|----------|--|
| 10 | 30872201 | FRAME SUPPORT ITS-4 135mm REAR AXLE > 2012 |
|----|----------|--|

MAVIC *Crossmax XL pro Ltd 27.5 WTS***Specifications****SPOKES**

• Shape : straight pull, bladed

WHEEL WEIGHTS

Wheel weight