

ASTM CATEGORY 3 : offroad with jumps less than 61cm

Recommended weight limit : 120kg

For a longer longevity of the wheel, Mavic recommends that the total weight supported by the wheels doesn't exceed 150kg, bike included

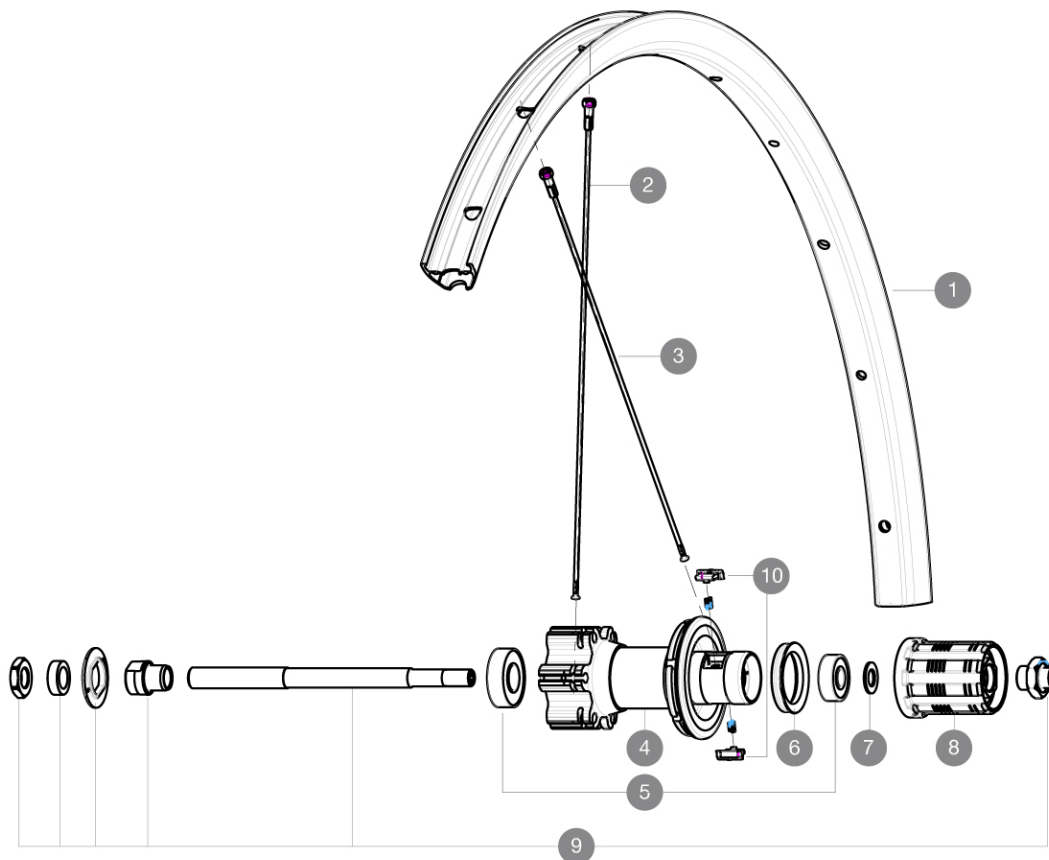
Maximum tyre pressure: 6.1bar/88PSI with a 25mm tyre - 3.5bar/51PSI with a 64mm tyre

Recommended tire sizes: 28 to 64 mm (1.1" to 2.5")

ETRTO recommended tyre sizes: 35mm to 69mm (1.4" to 2.7")

REFERENCES WHEELS

R76201 XRIIDE FTS-X INT 26 QR HG



RIMS



VALVE HOLE (MM): 8,5 WITH POP OFF REDUCER :

1 V2314715 "KIT FRT/RR RIM CROSSRIDE/CROSSRIDE FTSX 26""

SPOKES

2 36689801 KIT 12 FT/NDS CROSSONE SPK 264mm
3 V2383901 KIT 12 DS CROSSRIDE FTSX 26" SPOKE 265mm

HUB SHELLS

4 N/A HUB BODY
5 M40660 REAR HUB 608+6001 BEARINGS
6 99500001 FTSL/FTSX FREEHUB BODY SEAL
7 M40067 INTERNAL FREEWHEEL SPACER FTSL/FTSX
8 30871101 FTS-L ROAD FREEWHEEL BODY HG11 8/9 compatible
9 32348001 MTB DISC REAR AXLE QRM MTB DISC
10 32430301 FTSX PAWLS KIT (MTB WHEELS)



CROSSRIDE FTS-X 26

DELIVERED WITH

BR101 quick releases	
Rim tape	
Front QR adapters	
BR101 quick releases	
BR101 quick releases	
BR101 quick releases	
BR101 quick releases	
BR101 quick releases	
BR101 quick releases	
BR101 quick releases	
BR101 quick releases	
Valve reducer	
Front QR adapters	
Front QR adapters	
Front QR adapters	
Front QR adapters	
Front QR adapters	
Front QR adapters	
User guide	

COMPATIBILITY

Freewheel: Shimano/Sram	
Freewheel: Shimano/Sram	
Freewheel: Shimano/Sram	
Freewheel: Shimano/Sram	
Front axle: convertible from 15mm thru axle to Quick Release with included adapters	
Front axle: convertible from 15mm thru axle to Quick Release with included adapters	
Front axle: convertible from 15mm thru axle to Quick Release with included adapters	
Front axle: convertible from 15mm thru axle to Quick Release with included adapters	
Front axle: convertible from 15mm thru axle to Quick Release with included adapters	
Front axle: convertible from 15mm thru axle to Quick Release with included adapters	
Rear axle: 12x148 Boost thru axle	
ID360 N3W freewheel body (IV4270101)	
Rear axle: 12mm thru axle, convertible to Quick Release with adapters (delivered with non-boost wheel)	
ID360 Shimano steel freewheel body (IV3790101)	