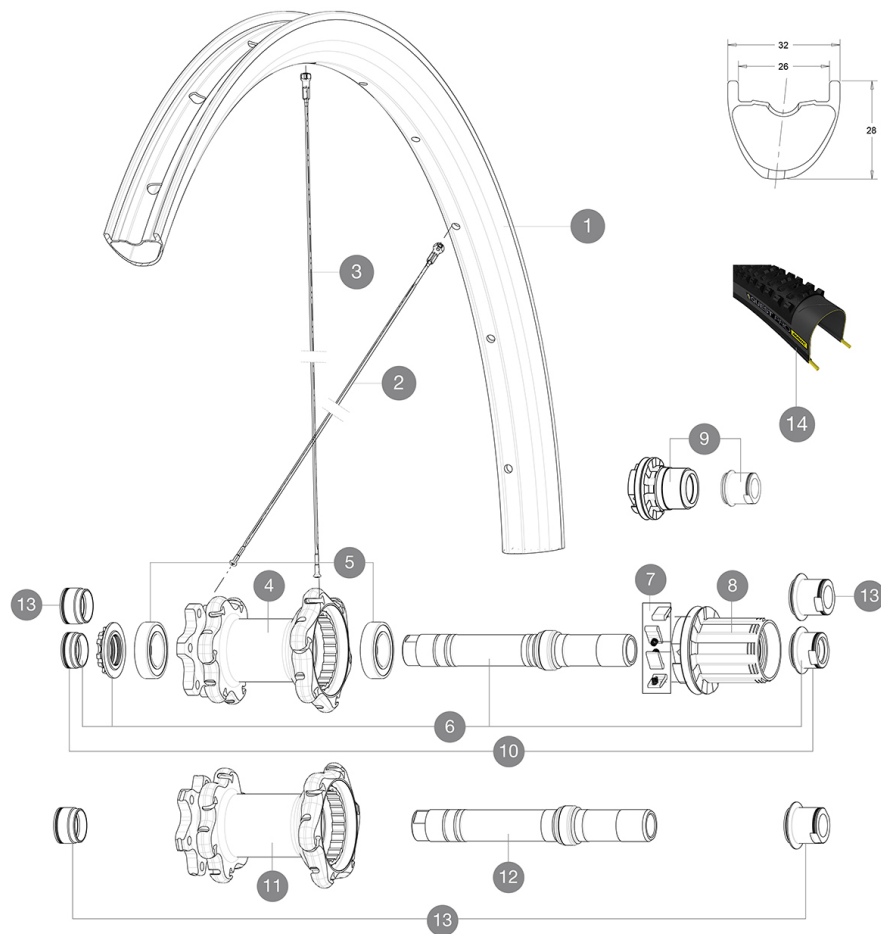


**MAVIC** XA Pro Carbon 29

ASTM CATEGORY 3 : offroad with jumps less than 61cm  
 Recommended weight limit : 120kg  
 Recommended tire sizes: 35 mm to 69 mm (1.4" to 2.7")  
 Recommended tyre sizes: 46mm to 64mm (1.8" to 2.5")

**REFERENCES WHEELS**

R83601 XaProCar29Rr

**RIMS**

&amp;NBSP;:

<b>1</b>	V3070113	KIT REAR RIM XA PRO CARBON 29"
	V2700101	UST Tape 28mm for 25 to 27mm wide rims

**SPOKES**

<b>2</b>	V2384201	KIT 12 FT/NDS XA PRO CARB 29" BTD SPK 289mm
<b>3</b>	V2384101	KIT 12 DS XA PRO CARBON 29" BTD SPOKE 287mm

**HUB SHELLS**

<b>4</b>	N/A	HUB BODY
<b>5</b>	M40076	HUB BEARINGS 17x30x7 6903 x 2
<b>6</b>	30870401	REAR QRM + AXLE KIT ITS4 135mm from 2012
<b>7</b>	99610601	PAWLS KIT FOR ITS-4 (OR TS-2)
<b>8</b>	99610701	ITS-4 FREEWHEEL SEAL
<b>8</b>	35126001	ITS-4 FREEWHEEL BODY + SEAL 2013 (NO PAWLS)
<b>9</b>	35684101	FREEHUB BODY XD TS2/ITS-4
<b>11</b>	N/A	HUB BODY
<b>12</b>	V2370801	KIT REAR QRM+ AXLE BOOST ITS-4 148mm

**TYRES**







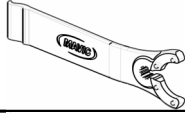
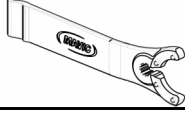
<b>14</b>	39243432	Quest Pro 29
-----------	----------	--------------

**ADAPTERS**

<b>10</b>	30872201	FRAME SUPPORT ITS-4 135mm REAR AXLE > 2012
<b>13</b>	30859301	AXLE ADAPTER Rr 12x142/148mm Pro Carb MTB (Grey)
	30873101	2 REAR REDUCERS 12/9,5mm 2012 ITS4 HUB

# MAVIC XA Pro Carbon 29

## DELIVERED WITH

1 bottle of Mavic Sealant (355 466 01) 1	
BX601 quick releases (V24 503 01 frt, V24 504 01 rear) 1	
Front QR adapters (996 941 01 for MTB or B41 043 01 for road) 1	
Rear 12x142mm adapters for ITS4 and TS2 (308 593 01 for ITS4, 329 650 01 for TS2) 1	
UST valve and accessories (129 838 01)	
UST valve and accessories (129 838 01)	
Tubeless rim tape	
Tubeless rim tape	
Multifunction adjustment wrench (325 423 01) 1	
Multifunction adjustment wrench (325 423 01) 1	
User guide	
User guide	

## COMPATIBILITY

Freewheel: Shimano/Sram or XD	
Freewheel: Shimano/Sram, convertible to XD with optional driver body	
Front axle: convertible from 15mm thru axle to Quick Release with included adapters	
Front axle: convertible from 15mm thru axle to Quick Release with included adapters	
Rear axle: 12mm thru axle, convertible to Quick Release with optional adapters	
Rear axle: 12mm thru axle, convertible to Quick Release with optional adapters	

## Specifications

### RIMS

- **Material** : 100% Unidirectional carbon fiber
- **Material** : 100% Unidirectional carbon fiber
- **Drilling** : traditional
- **Drilling** : traditional
- **Valve hole diameter** : 6.5 mm
- **Valve hole diameter** : 6.5 mm
- **Tire** : UST Tubeless and tubetype
- **Tire** : UST Tubeless and tubetype
- **Internal width** : 26 mm
- **Internal width** : 26 mm
- **ETRTO size 27.5"** : 584x26ss
- **ETRTO size 27.5"** : 584x26ss
- **ETRTO size 29"** : 622x26ss
- **ETRTO size 29"** : 622x26ss

Hookless profile

Hookless profile

Use with Mavic Tubeless Tape

Use with Mavic Tubeless Tape

### SPOKES

- **Material** : steel
- **Material** : steel
- **Shape** : straight pull, bladed, double butted
- **Shape** : straight pull, bladed, double butted
- **Count** : 24 front and rear

### WHEEL HUB

- **Front and rear bodies** : aluminum
- **Front and rear bodies** : aluminum
- **Axle material** : aluminum
- **Axle material** : aluminum
- Adjustable sealed cartridge bearings
- Adjustable sealed cartridge bearings
- **Freewheel** : ITS-4 alloy
- **Freewheel** : ITS-4 alloy

### VERSIONS

- **Color** : Black only
- **Color** : Black only
- **Disc standard** : 6 Bolts only
- **Disc standard** : 6 Bolts only
- **Hub width** : Boost (front 110, rear 148) or Non-Boost (front 100, rear 135/142)
- **Hub width** : Boost (front 110, rear 148) or Non-Boost (front 100, rear 135/142)

### WHEEL WEIGHTS

Wheel weight

Weight Rear 27.5": 835

Weight Rear 29": 855