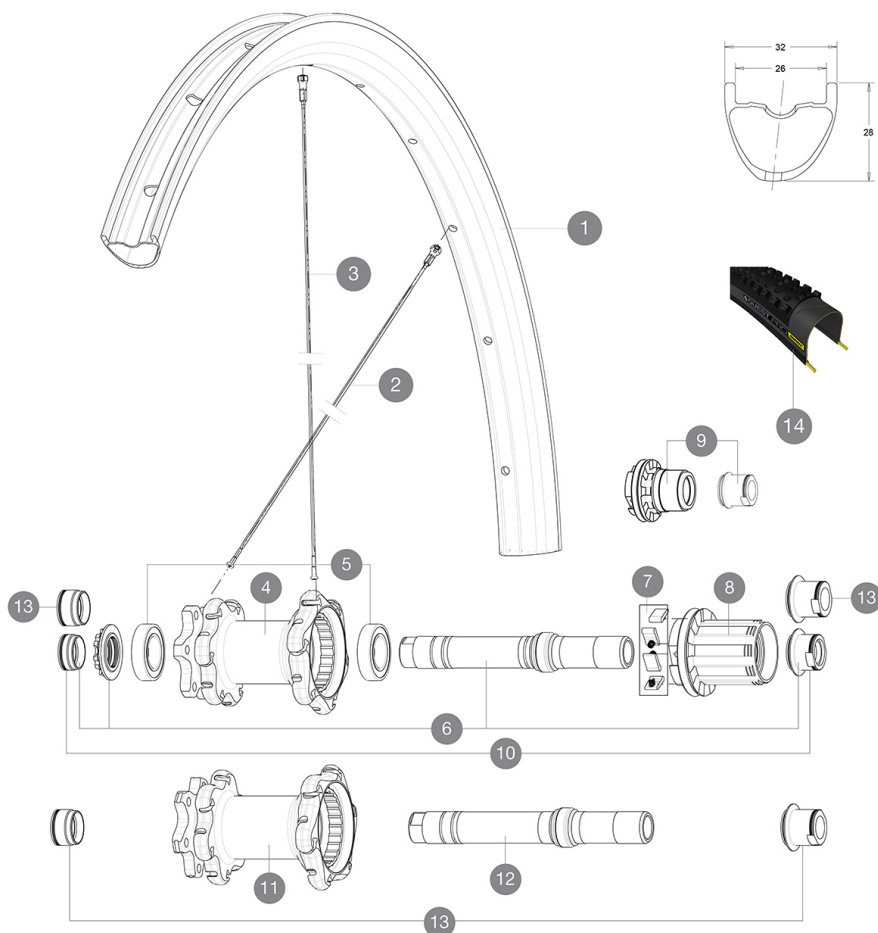


ASTM CATEGORY 3 : offroad with jumps less than 61cm
Recommended weight limit : 120kg
Recommended tire sizes: 35 mm to 69 mm (1.4" to 2.7")
Recommended tyre sizes: 46mm to 64mm (1.8" to 2.5")

REFERENCES WHEELS

R83601 XaProCar29Rr



RIMS



&NBSP;:

| | | |
|---|----------|--|
| 1 | V3070113 | KIT REAR RIM XA PRO CARBON 29" |
| | V2700101 | UST Tape 28mm for 25 to 27mm wide rims |

SPOKES

| | | |
|---|----------|---|
| 2 | V2384201 | KIT 12 FT/NDS XA PRO CARB 29" BTD SPK 289mm |
| 3 | V2384101 | KIT 12 DS XA PRO CARBON 29" BTD SPOKE 287mm |

HUB SHELLS

| | | |
|----|----------|---|
| 4 | N/A | HUB BODY |
| 5 | M40076 | HUB BEARINGS 17x30x7 6903 x 2 |
| 6 | 30870401 | REAR QRM + AXLE KIT ITS4 135mm from 2012 |
| 7 | 99610601 | PAWLS KIT FOR ITS-4 (OR TS-2) |
| 8 | 99610701 | ITS-4 FREEWHEEL SEAL |
| 8 | 35126001 | ITS-4 FREEWHEEL BODY + SEAL 2013 (NO PAWLS) |
| 9 | 35684101 | FREEHUB BODY XD TS2/ITS-4 |
| 11 | N/A | HUB BODY |
| 12 | V2370801 | KIT REAR QRM+ AXLE BOOST ITS-4 148mm |

TYRES







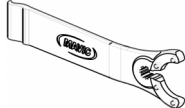
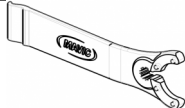
| | | |
|----|----------|--------------|
| 14 | 39243432 | Quest Pro 29 |
|----|----------|--------------|

ADAPTERS

| | | |
|----|----------|--|
| 10 | 30872201 | FRAME SUPPORT ITS-4 135mm REAR AXLE > 2012 |
| 13 | 30859301 | AXLE ADAPTER Rr 12x142/148mm Pro Carb MTB (Grey) |
| | 30873101 | 2 REAR REDUCERS 12/9,5mm 2012 ITS4 HUB |

MAVIC XA Pro Carbon 29

DELIVERED WITH

| | |
|---|---|
| 1 bottle of Mavic Sealant (355 466 01) 1 |  |
| BX601 quick releases (V24 503 01 frt, V24 504 01 rear) 1 |  |
| Front QR adapters (996 941 01 for MTB or B41 043 01 for road) 1 |  |
| Rear 12x142mm adapters for ITS4 and TS2 (308 593 01 for ITS4, 329 650 01 for TS2) 1 |  |
| UST valve and accessories (129 838 01) |  |
| UST valve and accessories (129 838 01) |  |
| Tubeless rim tape | |
| Tubeless rim tape | |
| Multifunction adjustment wrench (325 423 01) 1 |  |
| Multifunction adjustment wrench (325 423 01) 1 |  |
| User guide | |
| User guide | |

COMPATIBILITY

| | |
|---|--|
| Freewheel: Shimano/Sram, convertible to XD with optional driver body | |
| Freewheel: Shimano/Sram or XD | |
| Front axle: convertible from 15mm thru axle to Quick Release with included adapters | |
| Front axle: convertible from 15mm thru axle to Quick Release with included adapters | |
| Rear axle: 12mm thru axle, convertible to Quick Release with optional adapters | |
| Rear axle: 12mm thru axle, convertible to Quick Release with optional adapters | |

Specifications

RIMS

- **Material** : 100% Unidirectional carbon fiber
- **Material** : 100% Unidirectional carbon fiber
- **Drilling** : traditional
- **Drilling** : traditional
- **Valve hole diameter** : 6.5 mm
- **Valve hole diameter** : 6.5 mm
- **Tire** : UST Tubeless and tubetype
- **Tire** : UST Tubeless and tubetype
- **Internal width** : 26 mm
- **Internal width** : 26 mm
- **ETRTO size 27.5"** : 584x26ss
- **ETRTO size 27.5"** : 584x26ss
- **ETRTO size 29"** : 622x26ss
- **ETRTO size 29"** : 622x26ss

Hookless profile

Hookless profile

Use with Mavic Tubeless Tape

Use with Mavic Tubeless Tape

SPOKES

- **Material** : steel
- **Material** : steel
- **Shape** : straight pull, bladed, double butted
- **Shape** : straight pull, bladed, double butted
- **Count** : 24 front and rear

WHEEL HUB

- **Front and rear bodies** : aluminum
- **Front and rear bodies** : aluminum
- **Axle material** : aluminum
- **Axle material** : aluminum
- Adjustable sealed cartridge bearings
- Adjustable sealed cartridge bearings
- **Freewheel** : ITS-4 alloy
- **Freewheel** : ITS-4 alloy

VERSIONS

- **Color** : Black only
- **Color** : Black only
- **Disc standard** : 6 Bolts only
- **Disc standard** : 6 Bolts only
- **Hub width** : Boost (front 110, rear 148) or Non-Boost (front 100, rear 135/142)
- **Hub width** : Boost (front 110, rear 148) or Non-Boost (front 100, rear 135/142)

WHEEL WEIGHTS

Wheel weight
Weight Rear 27.5": 835
Weight Rear 29": 855