



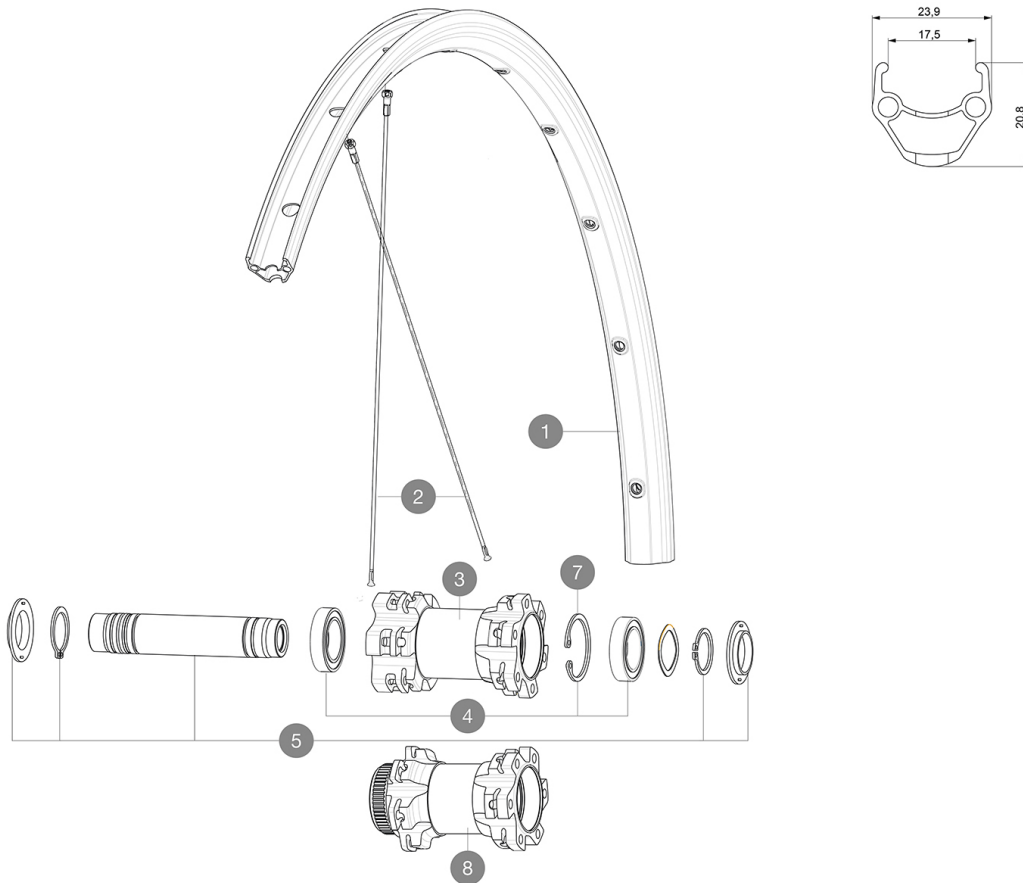
# Aksium Disc TA

## 参照ホイール

F73871 Aks18D6B Ft12x100SV

F73881 Aks18DCLFt12x100SV

ASTM A2106 2 : 15 + 15  
 120  
 25 32 mm  
 23mm 8.7 bars - 125 psi, 25mm 7.7 bars - 110 psi



### RIMS



&NBSP;:

- 1 V2290815 KIT FRONT/REAR RIM AKSIUM ONE DISC

### SPOKES

- 2 V2277201 KIT 12 FRONT 9/12mm AKSIUM DISC ALLROAD 700 ROUND SPOKE 296m

### HUB SHELLS

- 4 99688501 BEARING KIT 9/15 D6T HUB
- 5 V2371801 KIT FRONT AXLE 12mm L1 + WAVED WASHER + CLIP

### OPTIONS

- V2371901 KIT FRONT AXLE MTB L1 QRM AUTO 15x100mm

### ADAPTERS

- V2390801 KIT 2 FORK RESTS FRONT AXLE MTB QRM AUTO
- V2680301 "Kit Ft Road Adapter 12 >> 9mm"



# Aksium Disc TA

## 付属品

BR101 (M40350 M40351 M40352 MTB)	

## COMPATIBILITY

12mm thru axle, convertible to Quick Release with optional adapters	

## Specifications

### リム

- S6000 21 mm
- $\phi$  6.5 mm
- $\phi$  17 mm
- ETRTO : 622x17C

### スポーク

- 24
- ABS
- 2A

### ホイールハブ

- QRMA
- QRM
- Auto
- 360

### VERSIONS

- 6A
- RA

### ホイールの重み

905