



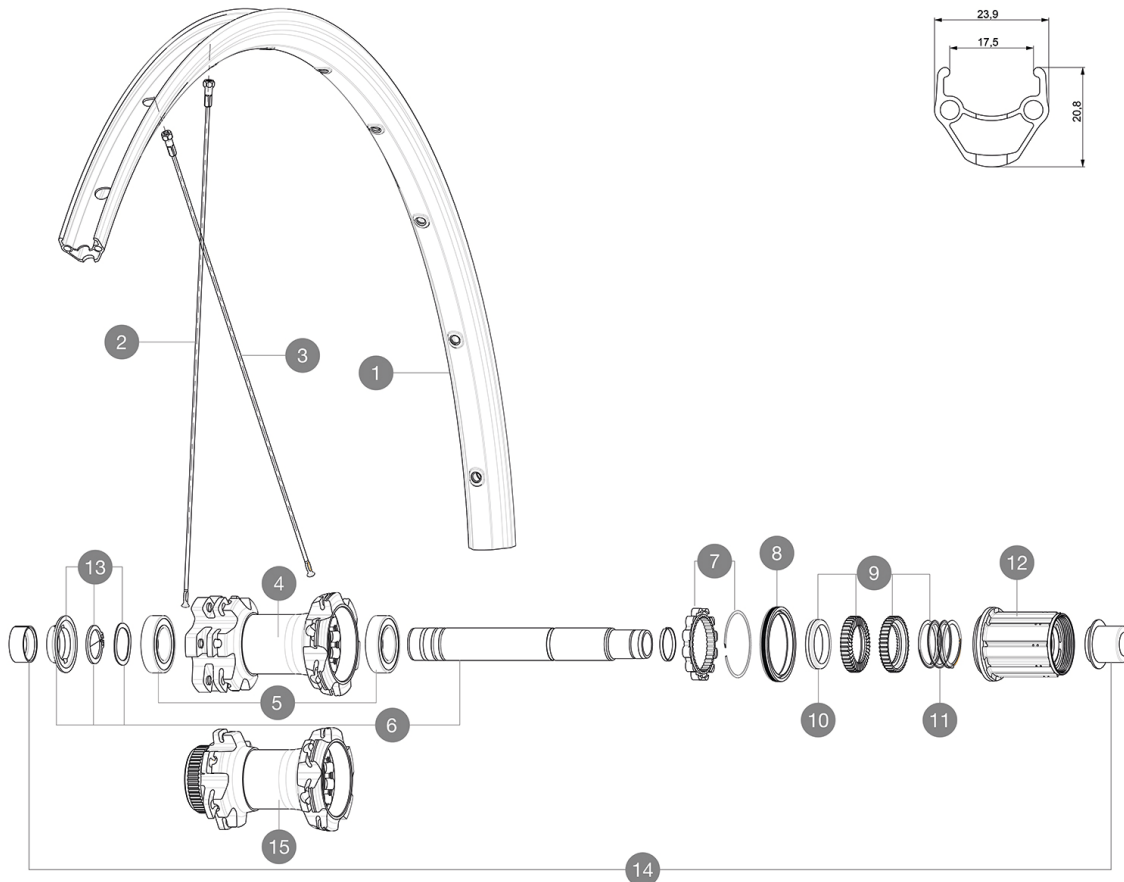
Aksium Disc TA

参照ホイール

R18911 Aks18D6BRr12x142SV

R18921 Aks18DCLRr12x142SV

ASTM A242 2 : 15mm 32 mm
 120mm 25mm
 23mm 8.7 bars - 125 psi, 25mm 7.7 bars - 110 psi



RIMS



&NBSP;:

1	V2290815	KIT FRONT/REAR RIM AKSIUM ONE DISC
---	----------	------------------------------------

SPOKES

2	V2277201	KIT 12 FRONT 9/12mm AKSIUM DISC ALLROAD 700 ROUND SPOKE
3	V2279201	KIT 12 DS AKSIUM DISC 12mm RND SPK 292mm

HUB SHELLS

5	M40076	HUB BEARINGS 17x30x7 6903 x 2
6	V2253001	KIT ID360 6 BOLTS 135/142mm AXLE WITH CIRCLIP
6	V2252901	KIT ID360 CENTER LOCK 135/142mm AXLE WITH CIRCLIP
7	V2252701	KIT ID360 INSERT SHAPED EAR LOBE > 2017
8	V2251601	ID360 SEAL + GREASE
9	V2251701	ID360 2 RATCHETS + SPRING + GREASE
10	V2500501	Kit 3 ID360 pad for noise reduction
11	V2251801	KIT 3 ID360 ROAD SPRINGS
12	V3430101	HG11 Freewheel Body ID360
12	V4000101	HG11 STEEL ROAD FREE HUB BODY ID360
13	V2560501	KIT ADJUST. SYSTEM QRM AUTO ID360 for 17x28x7 bearing

ADAPTERS

14	V2510701	ID360 EVO REAR AXLE ADAPTERS 12x142mm DCL & D6T
	V2510801	ID360 EVO REAR AXLE ADAPTERS 9x135mm DCL & D6T
	V2510901	ID360 EVO REAR AXLE ADAPTERS 12x135mm DCL & D6T

MAVIC Aksium Disc TA

付属品

BR101 (M40350 M40351 M40352 MTB)	

COMPATIBILITY

Rear axle: 12mm thru axle, convertible to Quick Release with optional adapters	

Specifications

リム

- S6000 21 mm
- : 6.5 mm
- : 17 mm
- ETRTO : 622x17C

スポーク

- 24
- 2A

ホイールハブ

- QRM Auto
- : 360

VERSIONS

- 6A
- RA

ホイールの重み

990