

# MAVIC Crossmax Pro 27,5

2019  
REAR

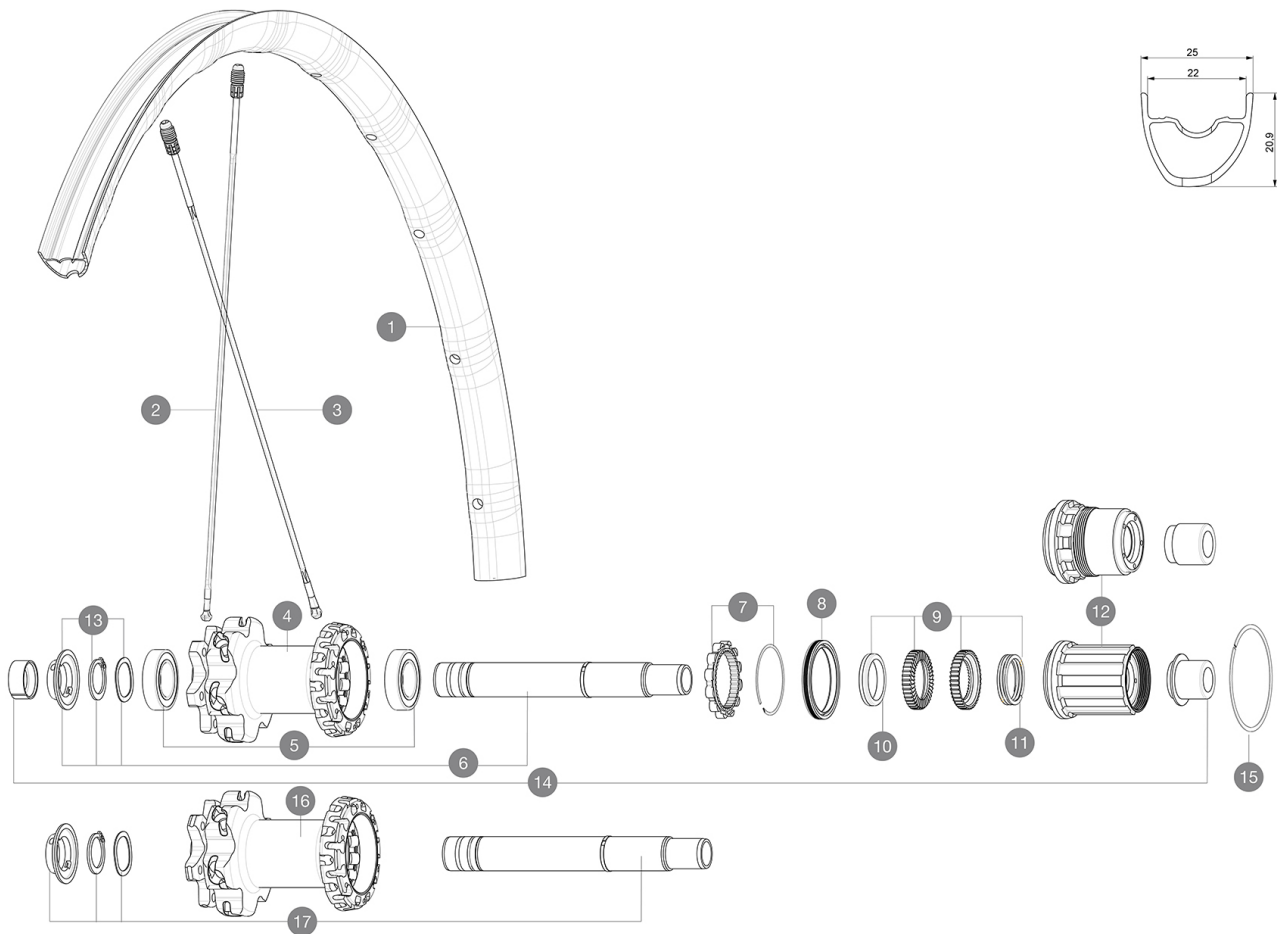
ASTM CATEGORY 3 : CROSS COUNTRY AND TRAIL RIDING

For a longer longevity of the wheel, Mavic recommends that the total weight supported by the wheels don't exceed 120kg, bike included

Recommended tyre sizes: 36 mm to 64 mm (1.4" to 2.5")

## REFERENCES WHEELS

|        |                              |        |                            |
|--------|------------------------------|--------|----------------------------|
| R26721 | Xmax Pro 27,5 19 Rr XD       | R26811 | Xmax Pro 27,5 19 Rr Offset |
| R26731 | Xmax Pro 27,5 19 Rr Boost    | R26711 | Xmax Pro 27,5 19 Rr        |
| R26741 | Xmax Pro 27,5 19 Rr Boost XD |        |                            |



## RIMS



&NBSP;:

|   |          |   |
|---|----------|---|
| 1 | V3765213 | KIT REAR RIM CROSSMAX PRO 19 27,5" Offset |
| 1 | V2319413 | KIT REAR RIM CROSSMAX PRO 19 27,5"        |

## SPOKES

|   |          |  |
|---|----------|--|
| 2 | V2384701 | KIT 12 FT/NDS CROSSMAX PRO 27,5" SPK 275mm                 |
| 3 | V2386601 | KIT 12 DS CROSSMAX PRO/XA PRO/E-DEEMAX PRO 19 27,5" BUTTED |

## HUB SHELLS

|    |          |  |
|----|----------|--|
| 4  | N/A      | HUB BODY   |
| 5  | M40076   | HUB BEARINGS 17x30x7 6903 x 2                              |
| 6  | V2372101 | KIT ID360 135/142 D6T AXLE WITH CLIP                       |
| 7  | V2252701 | KIT ID360 INSERT SHAPED EAR LOBE > 2017                    |
| 8  | V2251601 | KIT ID360 SEAL + GREASE                                    |
| 9  | V2375201 | KIT ID360 24 TEETH 2 RATCHET + MTB SPRING + PAD (specific) |
| 10 | V2375401 | KIT ID360 MTB 24T 3 NOISE REDUCING PADS                    |
| 11 | V2372901 | KIT 3 ID360 MTB SPRINGS                                    |
| 12 | V3780101 | HG9 Alloy MTB Freewheel Body ID360                         |
| 12 | V3740101 | XD MTB Freewheel Body ID360                                |
| 13 | V2373001 | KIT ADJUST. SYSTEM QRM AUTO ID360 for 17x30x7 bearing      |
| 15 | V2252201 | KIT 2 REAR HUB RETENTION RINGS 48mm                        |
| 16 | N/A      | HUB BODY   |
| 17 | V2372201 | KIT ID360 148 D6T AXLE WITH CLIP                           |

## OPTIONS



|          |   |
|----------|---|
| V2372801 | KIT ID360 2x40 TEETH RATCHETS + MTB SPRING + GREASE + PAD |
|----------|---|

## ADAPTERS

|    |          |                              |
|----|----------|------------------------------|
| 14 | V2510701 | ID360V2RrAxleAdapt12x142/148 |
|    | V2510801 | ID360 V2 RrAxleAdapt9x135    |

# MAVIC Crossmax Pro 27,5

## DELIVERED WITH

|   |   |
|---|---|
| Front QR adapters (non-boost wheel)             |   |
| Front QR adapters (non-boost wheel)             |   |
| Rear QR adapters (non-boost wheel)              |   |
| Rear QR adapters (non-boost wheel)              |   |
| UST valve and accessories<br>(129 838 01)       |  |
| UST valve and accessories<br>(129 838 01)       |  |
| Specific disc bolts<br>(308 719 01)             |   |
| Specific disc bolts<br>(308 719 01)             |   |
| Multifunction adjustment wrench<br>(325 423 01) |   |
| Multifunction adjustment wrench<br>(325 423 01) |   |
| User guide                                      |   |
| User guide                                      |   |

## COMPATIBILITY

|   |  |
|---|--|
| Freewheel: Shimano/Sram or XD   |  |
| Freewheel: Shimano/Sram or XD   |  |
| Front axle: convertible from 15mm thru axle to Quick Release with adapters (delivered with non-boost wheel) |  |
| Front axle: convertible from 15mm thru axle to Quick Release with adapters (delivered with non-boost wheel) |  |
| Rear axle: 12mm thru axle, convertible to Quick Release with adapters (delivered with non-boost wheel)      |  |
| Rear axle: 12mm thru axle, convertible to Quick Release with adapters (delivered with non-boost wheel)      |  |
| Freewheel: Shimano Micro Spline   |  |

## Specifications

### RIMS

- **Material** : Mxstal
- **Material** : Mxstal
- **Joint** : SUP
- **Joint** : SUP
- **Drilling** : Fore
- **Drilling** : Fore
- **Weight reduction** : ISM 4D
- **Weight reduction** : ISM 4D
- **Valve hole diameter** : 6.5 mm
- **Valve hole diameter** : 6.5 mm
- **Tyre** : UST Tubeless and tubetype
- **Tyre** : UST Tubeless and tubetype
- **Internal width** : 22 mm
- **Internal width** : 22 mm
- **ETRTO size 27.5"** : 584x22TSS
- **ETRTO size 27.5"** : 584x22TSS
- **ETRTO size 29"** : 622x22TSS
- **ETRTO size 29"** : 622x22TSS

Hookless profile  
Hookless profile

### SPOKES

- **Material** : Zicral
- **Material** : Zicral
- **Shape** : straight pull, bladed, double butted front

### WHEEL HUB

- **Front and rear bodies** : aluminum
- **Front and rear bodies** : aluminum
- **Axle material** : aluminum
- **Axle material** : aluminum
- **Front bearings** : adjustable sealed cartridge bearings (QRM+), Rear bearings auto adjust sealed cartridge bearings (QRM Auto)
- **Front bearings** : adjustable sealed cartridge bearings (QRM+), Rear bearings auto adjust sealed cartridge bearings (QRM Auto)
- **Freewheel** : Instant Drive 360
- **Freewheel** : Instant Drive 360

### VERSIONS

- **Disc standard** : 6 Bolts only
- **Disc standard** : 6 Bolts only
- **Hub width** : Boost (front 110, rear 148) or Non-Boost (front 100, rear 135/142)
- **Hub width** : Boost (front 110, rear 148) or Non-Boost (front 100, rear 135/142)
- Lefty 60 Supermax
- Lefty 60 Supermax
- **Freewheel** : Shimano/Sram or XD
- **Freewheel** : Shimano/Sram or XD
- Lefty 50 (29" only)

### WHEEL WEIGHTS

Weight Rear 27.5": 816  
Weight Rear 29": 845