

ASTM CATEGORY 2 : road and offroad with jumps less than 15cm

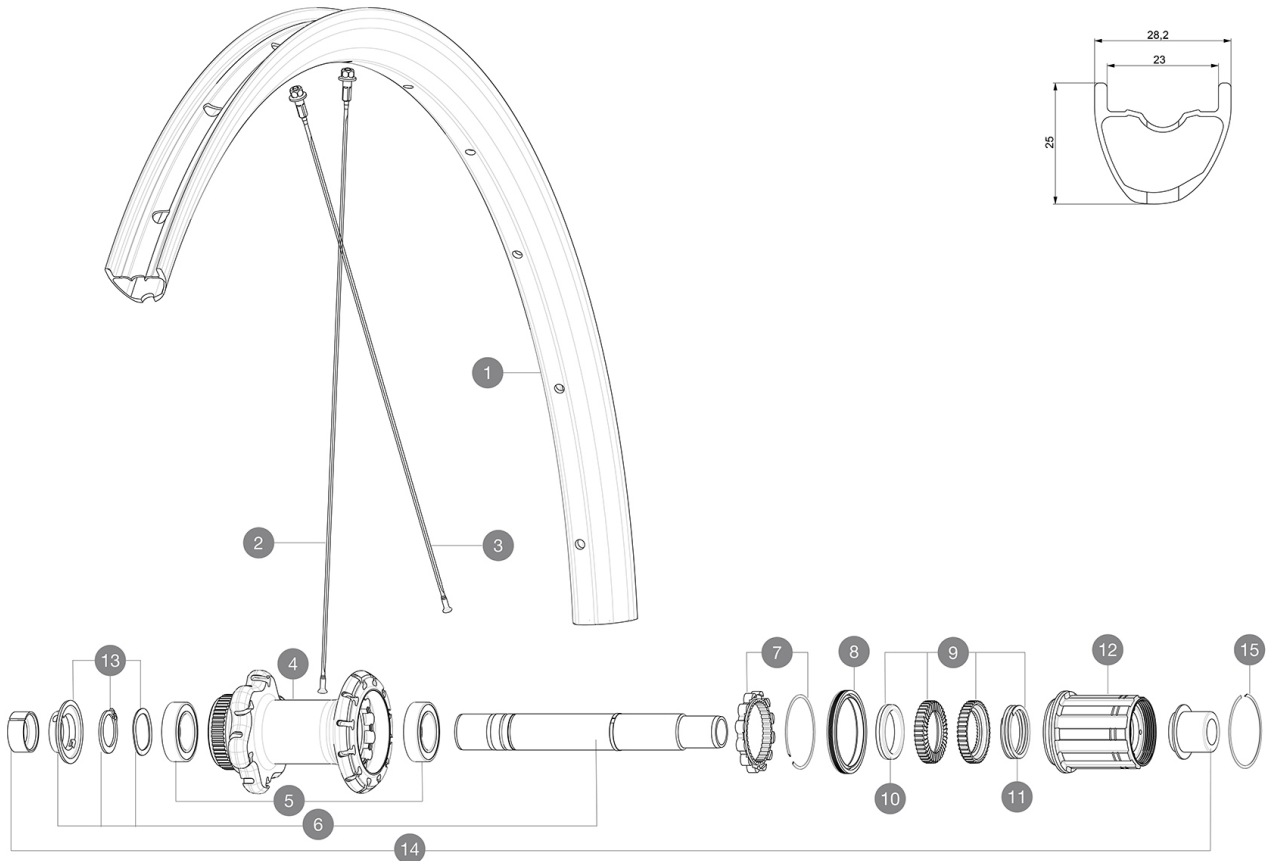
For a longer longevity of the wheel, Mavic recommends that the total weight supported by the wheels don't exceed 120kg, bike included

Recommended tyre sizes: 28 to 64 mm (1.1" to 2.5")

Max. Pressure: see indication on wheel and tyre. If they differ, use the lower of the 2

## REFERENCES WHEELS

R32061 Allroad Pro Carb SL DCLRr



## RIMS



&NBSP;:

|   |          |  |
|---|----------|--|
| 1 | V2738913 | KIT REAR RIM ALLROAD PRO CARBON SL -while stock last |
| 1 | V4094513 | Kit Rear rim Allroad Pro Carbon SL while stock lasts |
|   | V2620101 | UST RIM TAPE 25mm (for 21-24mm wide rim)             |

## SPOKES

|   |          |  |
|---|----------|--|
| 2 | V3821801 | KIT 12 FRT/REAR CROSSMAX PRO CARBON 29" EXTRA FLAT SPOKE 29  |
| 2 | V3668301 | Kit 2 FRONT/NDs Allroad Pro Carbon SL stamped spoke 291 + al |
| 3 | V2384401 | KIT 12 FT/DS CROSSMAX PRO CARB 27,5" SPK 274mm               |

## HUB SHELLS

|    |          |   |
|----|----------|---|
| 4  | N/A      | HUB BODY  |
| 5  | V2560401 | KIT 2 BEARINGS 17x28x7 + WAVED WASHER + CLIP          |
| 6  | V2252901 | KIT ID360 CENTER LOCK 135/142mm AXLE W/CLIP           |
| 7  | V2252701 | KIT ID360 INSERT SHAPED EAR LOBE > 2017               |
| 8  | V2251601 | KIT ID360 SEAL + GREASE                               |
| 9  | V2251701 | KIT ID360 2 RATCHETS + SPRING + GREASE                |
| 10 | V2500501 | KIT ID360 3 PADS NOISE REDUCING                       |
| 11 | V2251801 | KIT 3 ID360 ROAD SPRINGS                              |
| 12 | V3430101 | HG11 Freewheel Body ID360                             |
| 13 | V2560501 | KIT ADJUST. SYSTEM QRM AUTO ID360 for 17x28x7 bearing |
| 15 | V2252201 | KIT 2 REAR HUB RETENTION RINGS 48mm                   |

## TYRES

|    |          |                   |
|----|----------|-------------------|
| 16 | 39949936 | Yksion Allroad XL |
|----|----------|-------------------|

## ADAPTERS


|    |          |                                |
|----|----------|--------------------------------|
| 14 | V2510701 | ID360V2RrAxleAdapt12x142/148   |
|    | V2510901 | ID360 EVO RrAxleAdpt12x135/150 |
|    | V2510801 | ID360 V2 RrAxleAdapt9x135      |



# Allroad Pro Carbon SL

2020  
REAR

DELIVERED WITH

|  |   |
|--|---|
| Mavic tyre sealant (rear wheel)<br>(355 466 01)                  |   |
| Tyre sealant syringe   |   |
| Front QR adapters<br>(996 941 01 for MTB or B41 043 01 for road) |   |
| Rear QR adapters for Instant Drive 360<br>(B49 894 01)           |   |
| UST valve and accessories<br>(129 838 01)                        |  |
| User guide   |   |

COMPATIBILITY

|  |  |
|--|--|
| Freewheel: Shimano/Sram, convertible to Campagnolo and XD-R with optional driver bodies  |  |
| Front axle: 12mm thru axle, easily convertible to quick release with included adapters. Convertible to 15mm with complete axle replacement |  |
| Rear axle: 12mm thru axle, convertible to Quick Release with included adapters   |  |

Specifications

RIMS

- **Material** : 100% Unidirectional carbon fiber
  - **Height** : 25mm
  - **Drilling** : traditional
- Disc brake specific profile
- **Valve hole diameter** : 6.5 mm
  - **Tyre** : UST Tubeless and tubetype
  - **Internal width** : 23 mm
  - **ETRTO size** : 622x23TSS Road
- Hookless profile  
Use with Mavic Tubeless Tape

SPOKES

- **Material** : steel
- **Shape** : straight pull, flat, double butted
- **Nipples** : aluminum, ABS
- **Count** : 24 front and rear
- **Lacing** : front crossed 2, rear Isopulse

WHEEL HUB

- **Front and rear bodies** : aluminum
  - **Axle material** : aluminum
- Auto adjust sealed cartridge bearings (QRM Auto), front and rear
- **Freewheel** : Instant Drive 360
  - **Front** : Quick release, 12x100 and 15x100 through axle compatible
  - **Rear** : Quick Release, 12x142 and 12x135 compatible

VERSIONS

- **Color** : Black only
- **Disc standard** : Center Lock(R) only

WHEEL WEIGHTS

775