

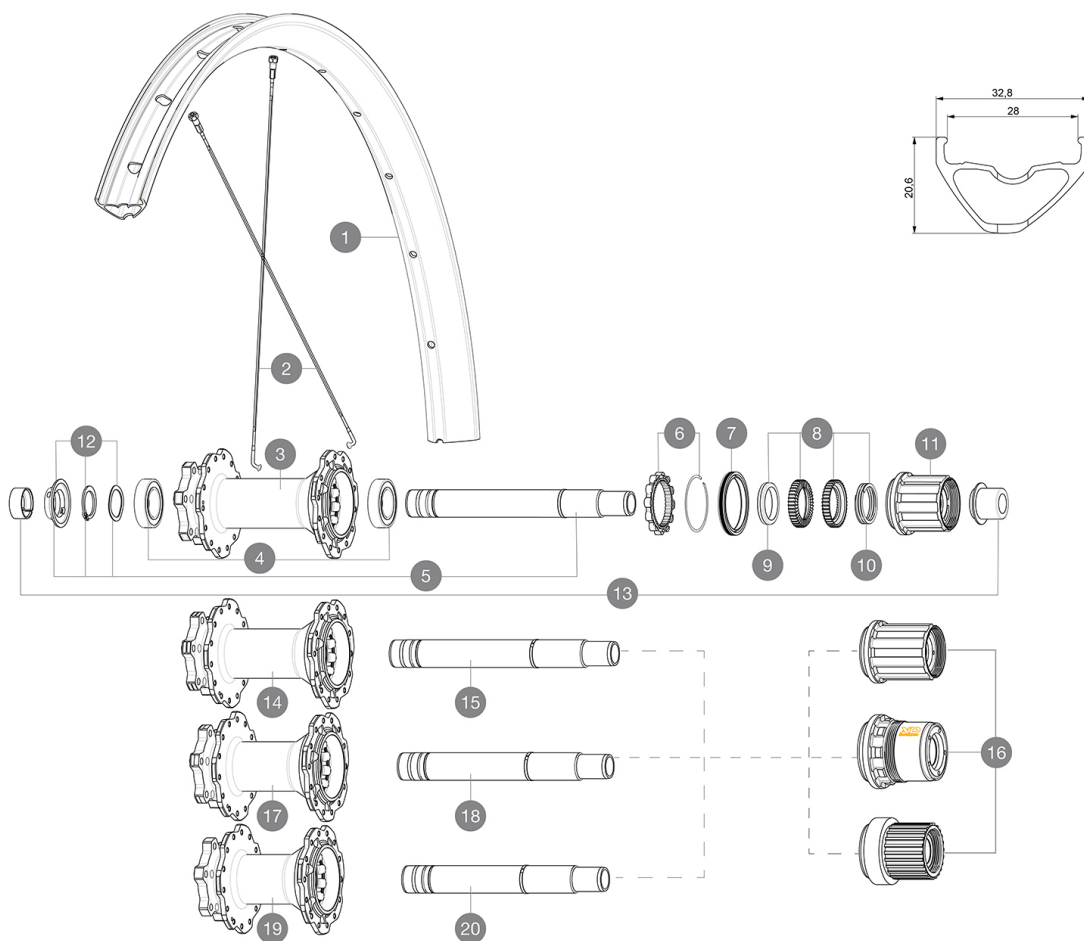
ASTM CATEGORY 5 : GRAVITY RIDING FOCUSED ON THE DESCENT

For a longer longevity of the wheel, Mavic recommends that the total weight supported by the wheels don't exceed 120kg, bike included

Recommended tyre sizes: 60mm to 76mm (2.35" to 3.0")

## REFERENCES WHEELS

R36531	DeemaxDH29Rr Bst MS	R33291	Deemax DH 29 Rr Boost
R33321	Deemax DH 29 Rr Boost XD	R33311	Deemax DH 29 Rr XD
R36521	Deemax DH 29 Rr MS	R35051	Deemax DH 29 Rr 12x157
R36991	DeemaxDH29Rr 12x157 XD	R35061	Deemax DH 29 Rr 12x157 7s
R33281	Deemax DH 29 Rr		



## RIMS



&nbsp;N&nbsp;S&nbsp;P&nbsp;::

1	V3764215	KIT FRONT/REAR RIM DEEMAX DH 20 29"
	V2640101	UST RIM TAPE 32mm for 28 to 29mm wide rims

## SPOKES

2	V2387901	KIT 14 J BENT STEEL SPOKES 298mm DEEMAX DH 20 29" + black s
---	----------	---

## HUB SHELLS


3	N/A	HUB BODY
4	M40076	HUB BEARINGS 17x30x7 6903 x 2
5	V2374901	Kit ID360 150/157 D6T 7S 2AXLE WITH CIRCLIP
6	V2252701	KIT ID360 INSERT SHAPED EAR LOBE > 2017
7	V2251601	KIT ID360 SEAL + GREASE
8	V2375201	KIT ID360 24 TEETH 2 RATCHET + MTB SPRING + PAD (specific)
9	V2375401	KIT ID360 MTB 24T 3 NOISE REDUCING PADS
10	V2372901	KIT 3 ID360 MTB SPRINGS
11	V2375001	Freehub Body ID360 7S Alu
12	V2373001	KIT ADJUST. SYSTEM QRM AUTO ID360 for 17x30x7 bearing
14	N/A	HUB BODY
15	V2374801	Kit ID360 150/157 D6T AXLE WITH CIRCLIP
16	V3740101	XD MTB Freewheel Body ID360
16	V3990101	MicroSpline MTB Freewheel Body ID360
16	V3780101	HG9 Alloy MTB Freewheel Body ID360
17	N/A	HUB BODY

18	V2372201	KIT ID360 148 D6T AXLE WITH CLIP
19	N/A	HUB BODY
20	V2372101	KIT ID360 135/142 D6T AXLE WITH CLIP

## ADAPTERS

13	V2510701	ID360V2RrAxleAdapt12x142/148
----	----------	------------------------------

## DELIVERED WITH

UST valve and accessories (129 838 01)	
Specific disc bolts (308 719 01)	
Tubeless rim tape	

## COMPATIBILITY

Freewheel: Shimano/Sram or XD	
Front axle: 15mm, convertible to 20mm thru axle with included adapters	
Rear axle: 12mm thru axle, convertible to Quick Release with optional adapters	
Freewheel: Shimano Micro Spline	

## Specifications

### RIMS

- **Material** : Mxxtal
  - **Joint** : SUP
  - **Drilling** : traditional
  - **Valve hole diameter** : 6.5 mm
  - **Tyre** : UST Tubeless and tubetype
  - **Internal width** : 28 mm
  - **ETRTO size 27.5"** : 584x28TC
  - **ETRTO size 29"** : 622x28TC
- Use with Mavic Tubeless Tape

### SPOKES

- **Material** : steel
- **Shape** : straight pull, flat, double butted
- **Count** : 28 front and rear
- **Lacing** : front and rear crossed 3

### WHEEL HUB

- **Front and rear bodies** : aluminum
  - **Axle material** : aluminum
- Auto adjust sealed cartridge bearings (QR Auto), front and rear
- **Freewheel** : Instant Drive 360

### VERSIONS

- **Color** : Black only
  - **Disc standard** : 6 Bolts only
- Freewheel; SRAM XD, Shimano HG, Shimano Micro-Spline
- **Hub width** : Boost (front 15/20x110, rear 148) or Non-Boost (front 15/20x100, rear 135/142) or DH rear (150/157) or DH7S rear (150/157-7S)

### WHEEL WEIGHTS

Weight Rear 27.5": 1050  
Weight Rear 29": 1103