

MAVIC DEEMAX PRO SAM HILL 29

ASTM CATEGORY 4 : ENDURO AND TRAIL RIDING

For a longer longevity of the wheel, Mavic recommends that the total weight supported by the wheels don't exceed 120kg, bike included

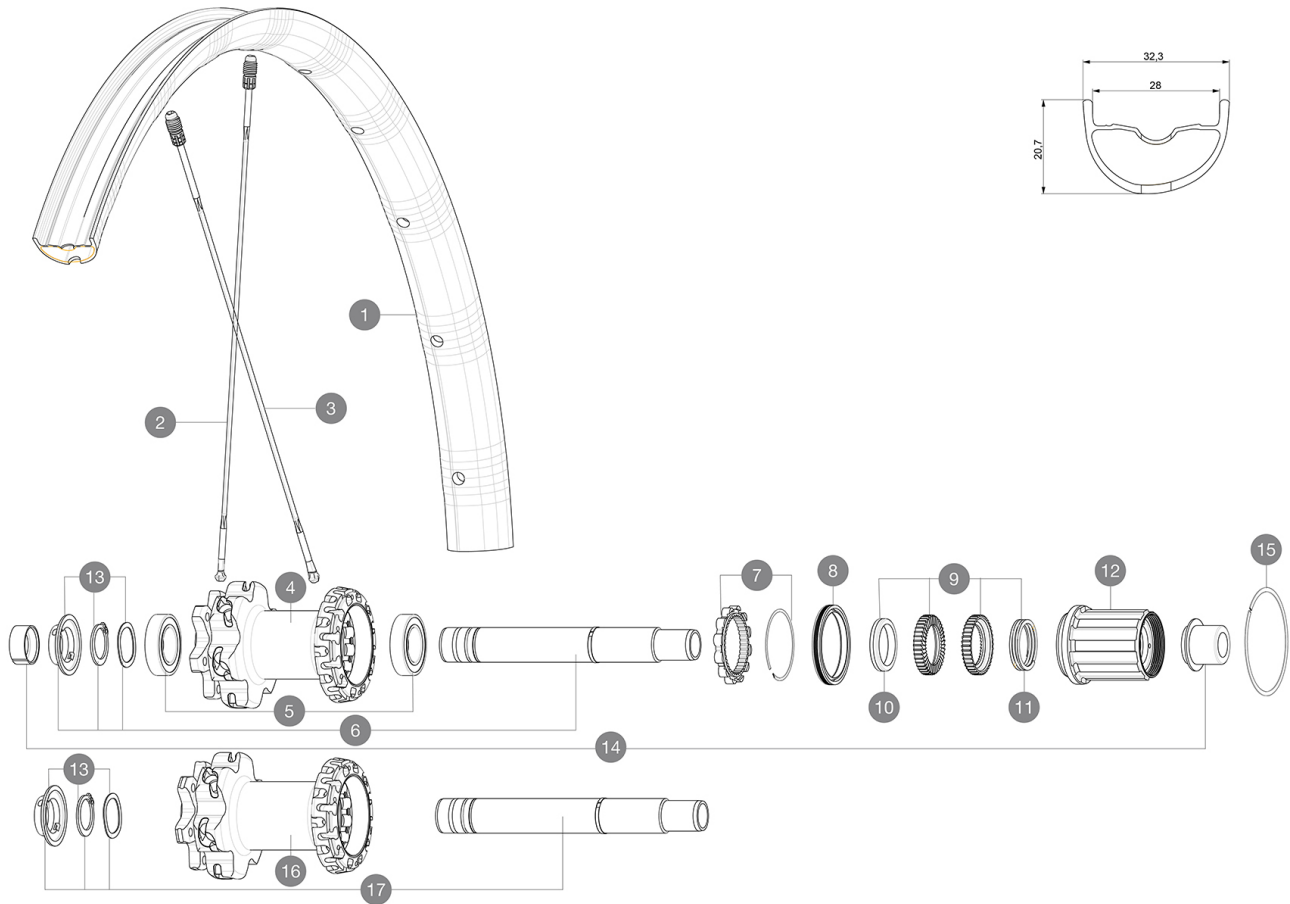
For a longer longevity of the wheel, Mavic recommends that the total weight supported by the wheels doesn't exceed 150kg, bike included

Maximum tyre pressure: 2.55bar/37PSI with a 54mm tyre - 1.3bar/19PSI with a 125mm tyre

Recommended tyre sizes: 46mm to 64mm (1.8" to 2.5")

REFERENCES WHEELS

R35151 DEEMPRO SH INT 29 BST XD



RIMS



&NBSP::

1 V3764713 KIT REAR RIM DEEMAX PRO SH 29"

SPOKES

2 A7209901 KIT 12 FT/NDS CROSSMAX XL/DEEMAX PRO 19 29" SPK 293mm
3 V2386501 KIT 12 DS CROSSMAX PRO/XA PRO/DEEMAX PRO 19 29" ALU SPOKE 2





HUB SHELLS

4 N/A HUB BODY
5 M40076 HUB BEARINGS 17x30x7 6903 x 2
6 V2372101 KIT ID360 135/142 D6T AXLE WITH CLIP
7 V2252701 KIT ID360 INSERT SHAPED EAR LOBE > 2017
8 V2251601 KIT ID360 SEAL + GREASE
9 V2375201 KIT ID360 24 TEETH 2 RATCHET + MTB SPRING + PAD (specific)
10 V2375401 KIT ID360 MTB 24T 3 NOISE REDUCING PADS
11 V2372901 KIT 3 ID360 MTB SPRINGS
12 V3780101 HG9 Alloy MTB Freewheel Body ID360
12 V3740101 XD MTB Freewheel Body ID360
13 V2373001 KIT ADJUST. SYSTEM QRM AUTO ID360 for 17x30x7 bearing
15 V2252201 KIT 2 REAR HUB RETENTION RINGS 48mm
16 N/A HUB BODY
17 V2372201 KIT ID360 148 D6T AXLE WITH CLIP

ADAPTERS

14 V2510701 ID360V2RrAxleAdapt12x142/148
V2510801 ID360 V2 RrAxleAdapt9x135

DELIVERED WITH

UST valve and accessories (129 838 01)	
UST valve and accessories (129 838 01)	
UST valve and accessories (129 838 01)	
UST valve and accessories (129 838 01)	
Specific disc bolts (308 719 01)	
Specific disc bolts (308 719 01)	
Specific disc bolts (308 719 01)	
Specific disc bolts (308 719 01)	
Multifunction adjustment wrench (325 423 01)	
Multifunction adjustment wrench (325 423 01)	
Multifunction adjustment wrench (325 423 01)	
Multifunction adjustment wrench (325 423 01)	
Replacement spokes (2 with the front wheel and 4 with the rear)	
User guide	
User guide	
User guide	
User guide	
Sram XD (on the wheel) and Shimano HG freewheel bodies	

COMPATIBILITY

Freewheel: Shimano/Sram or XD	
Rear axle: 12mm thru axle, convertible to Quick Release with optional adapters	
Rear axle: 12mm thru axle, convertible to Quick Release with optional adapters	
Rear axle: 12mm thru axle, convertible to Quick Release with optional adapters	
Freewheel: Shimano Micro Spline	
Freewheel: Shimano Micro Spline	
Freewheel: Shimano/Sram or XD (both delivered with the wheel)	