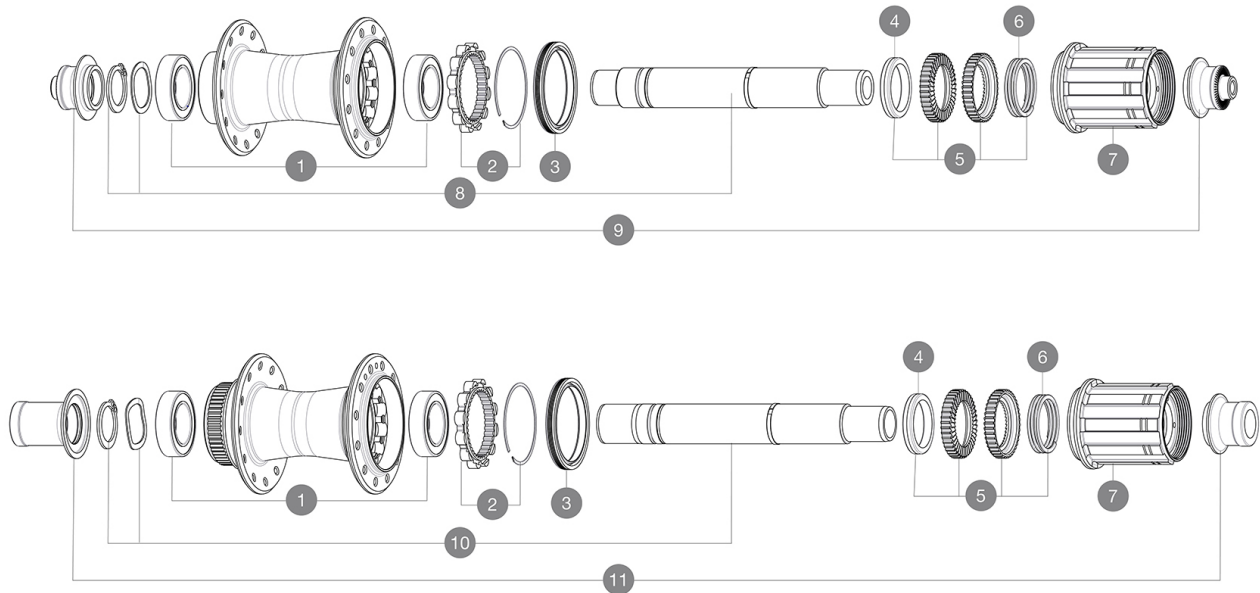


## REFERENCES WHEELS



### HUB SHELLS

1	V2560401	KIT 2 BEARINGS 17x28x7 + WAVED WASHER + CLIP
2	V2252701	KIT ID360 INSERT SHAPED EAR LOBE > 2017
3	V2251601	KIT ID360 SEAL + GREASE
4	V2500501	KIT ID360 3 PADS NOISE REDUCING
5	V2251701	KIT ID360 2 RATCHETS + SPRING + GREASE
6	V2251801	KIT 3 ID360 ROAD SPRINGS
7	V3430101	HG11 Freewheel Body ID360
8	V2252801	KIT ID360 UB REAR AXLE W/CLIP/WAVED WASHER
10	V2373401	KIT ID360 135/142 DCL L1 AXLE WITH CLIP

### ADAPTERS

9	V2253101	KIT REAR AXLE ADAPTOR QUICK RELEASE ID360
11	V3811001	KIT ROAD ID360 RR CL ENDCAP (12MM)

# MAVIC MR801 CLASSIC RB

## DELIVERED WITH

BR601 quick releases (rim brake version only)	
BR601 quick releases (rim brake version only)	
Front QR adapters (996 941 01 for MTB or B41 043 01 for road)	
Front QR adapters (996 941 01 for MTB or B41 043 01 for road)	
Rear QR adapters for Instant Drive 360 (B49 894 01)	
Rear QR adapters for Instant Drive 360 (B49 894 01)	

## COMPATIBILITY

Freewheel: Shimano/Sram, convertible to Campagnolo and XD-R with optional driver bodies	
Freewheel: Shimano/Sram, convertible to Campagnolo and XD-R with optional driver bodies	
Front axle: 12x100 thru axle, easily convertible to quick release with included adapters. Not compatible with 15mm through axles.	
Front axle: 12x100 thru axle, easily convertible to quick release with included adapters. Not compatible with 15mm through axles.	
Rear axle: 12mm thru axle, convertible to Quick Release with included adapters	
Rear axle: 12mm thru axle, convertible to Quick Release with included adapters	
Maximum spoke width: 2,4mm	
Maximum spoke width: 2,4mm	

## Specifications

### WHEEL HUB

- Front and rear bodies : aluminum
  - Front and rear bodies : aluminum
  - Axle material : aluminum
  - Axle material : aluminum
- Auto adjust sealed cartridge bearings (QRM Auto), front and rear
- Freewheel : Instant Drive 360
  - Front : Quick release and 12x100 through axle compatible
  - Front : Quick release and 12x100 through axle compatible
  - Rear : Quick Release, 12x142 and 12x135 compatible
  - Rear : Quick Release, 12x142 and 12x135 compatible
- Instant Drive 360  
QRM Auto

### VERSIONS

- Disc standard : Center Lock(R) only
- Disc standard : Center Lock(R) only
- Front for disc brake : 24, 28 and 32 holes
- Front for disc brake : 24 & 28 holes
- Front for rim brake : 20 holes
- Front for rim brake : 20, 24 and 28 holes
- Rear for disc brake : 24, 28 and 32 holes
- Rear for rim brake : 24, 28 and 32 holes
- Rear for disc brake : 24 & 28 holes
- Rear for rim brake : 24 holes

### WHEEL WEIGHTS