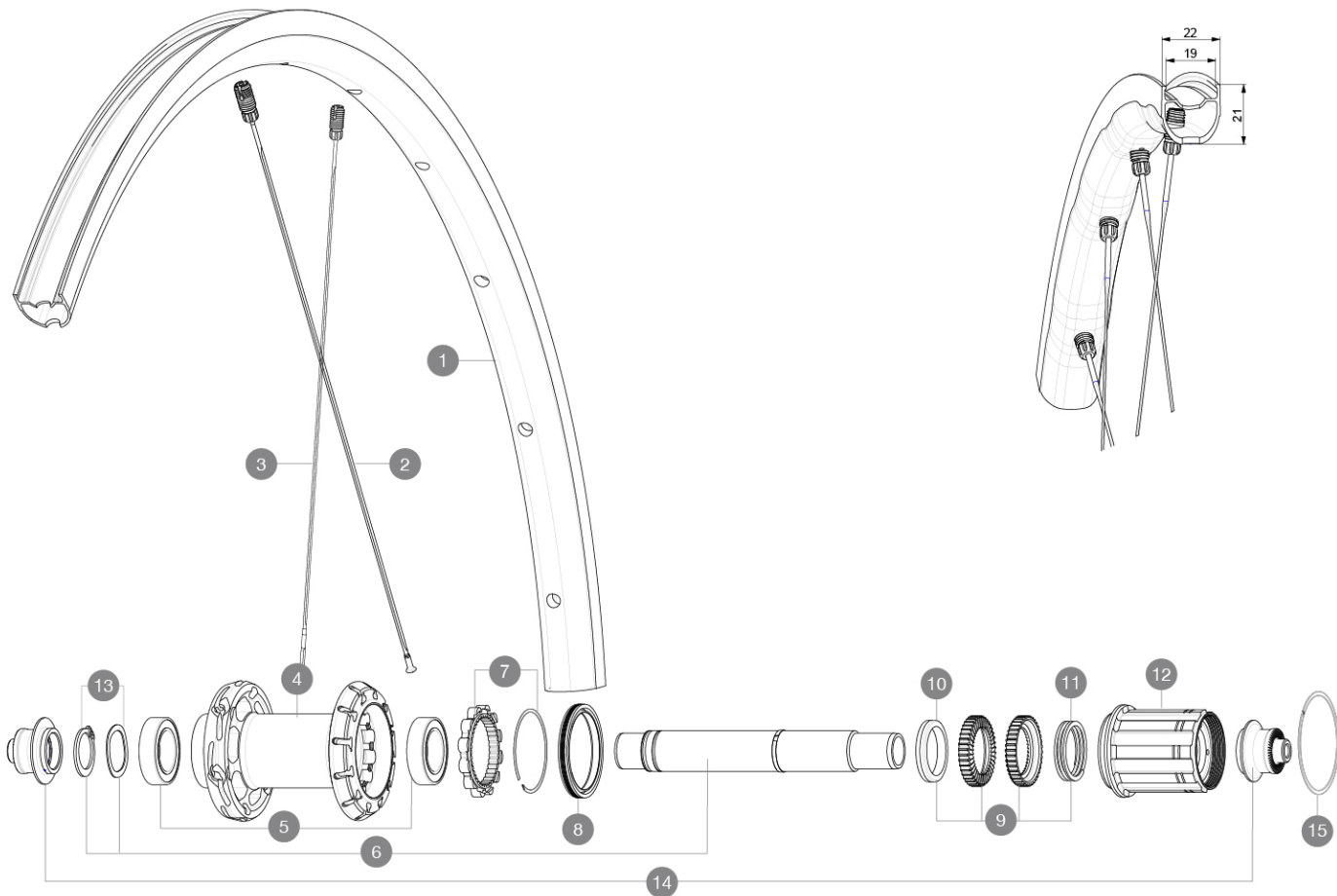


MAVIC KSYRIUM S

参照ホイール

R36721 KSYRIUM S RB 700 QR M11

ASTM A21062 : 2015
 23mm
 6.75Bar/97PSI
 120
 25
 32 mm
 2
 Maximum tyre pressure: 6.75bar/97PSI with a 23mm tyre - 3.8bar/55PSI with a 62mm tyre
 62mm
 3.8Bar/55PSI



RIMS



&NBSP;:

1	V4093813	Kit Rear rim Ksyrium S RB
---	----------	---------------------------

SPOKES

2	V4163901	Kit 12 rear Ksyrium S DS butted spoke 278mm M7/7
3	V4163801	Kit 12 rear Ksyrium S NDS butted spoke 297mm M7/7

HUB SHELLS

4	N/A	HUB BODY
5	V2560401	KIT ID360 2 BEARINGS 17x28x7 + CIRCLIP + WAVED WASHER (QRM)
6	V2252801	KIT ID360 UB REAR WHEEL AXLE WITH CIRCLIP/WAVE WASHER
7	V2252701	KIT ID360 INSERT SHAPED EAR LOBE > 2017
8	V00063631	Kit ID360 seal version 2 (larger)
9	V2251701	ID360 2 RATCHETS + SPRING + GREASE

10	V2500501	Kit 3 ID360 pad for noise reduction
11	V2251801	KIT 3 ID360 ROAD SPRINGS
12	V3430101	HG11 Freewheel Body ID360
13	V2560501	KIT ADJUST. SYSTEM QRM AUTO ID360 for 17x28x7 bearing
15	V2252201	KIT 2 REAR HUB RETENTION RINGS 48mm

ADAPTERS

14	V2253101	KIT REAR AXLE ADAPTOR QUICK RELEASE ID360
----	----------	---

付属品

Table with 2 columns and 16 rows listing accessories for MAVIC KSYRIUM S, including items like MAVIC cables, BR101 cables, and UST cables with their respective part numbers.

COMPATIBILITY

Table with 2 columns and 16 rows detailing compatibility information for various components like cables, connectors, and components from brands like SHIMANO and CAMPAGNOLO.