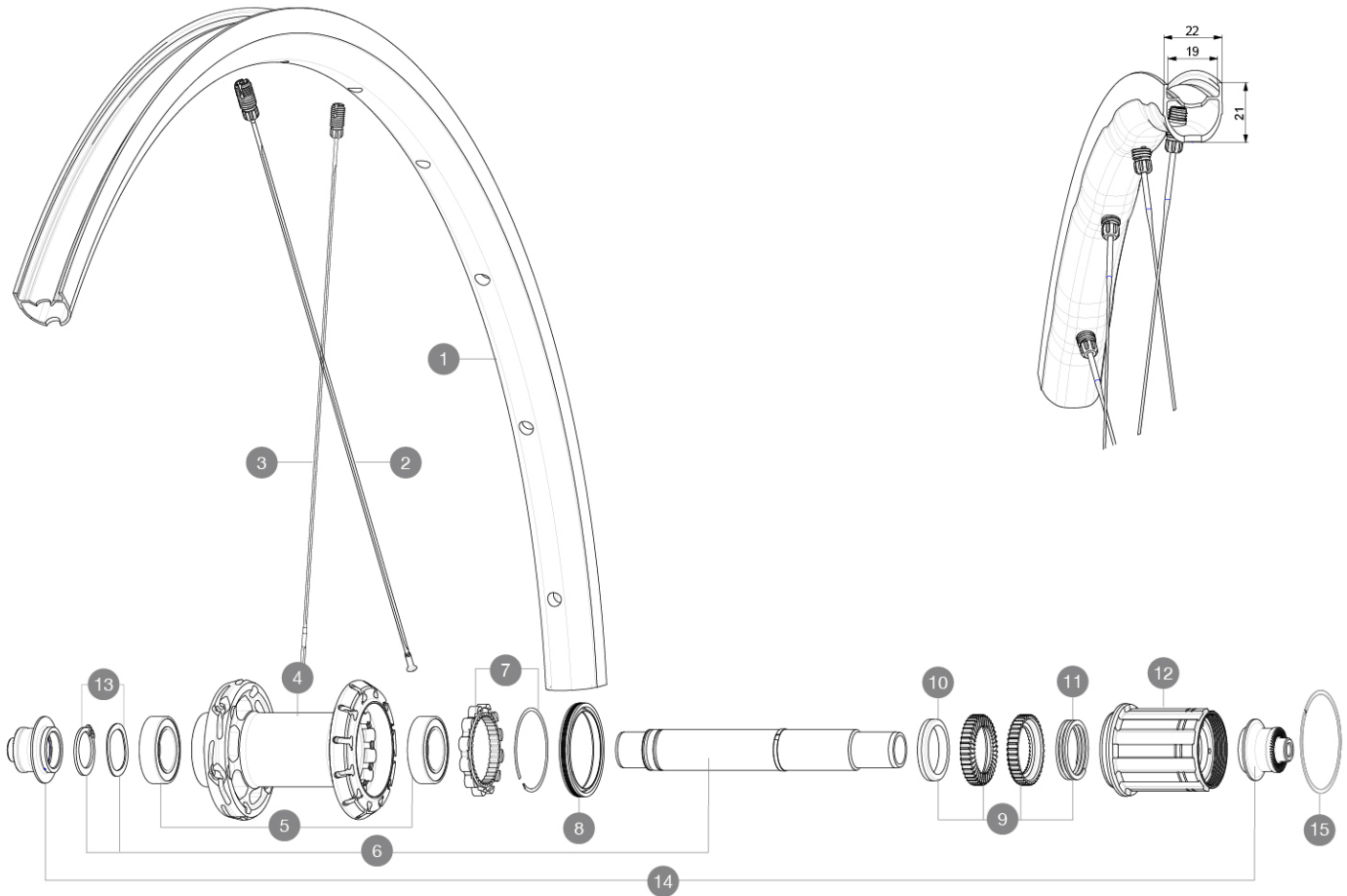


**MAVIC** **KSYRIUM S**

Maximum tyre pressure: 4.4bar/64PSI with a 28mm tyre - 2.6bar/38PSI with a 64mm tyre  
 ASTM CATEGORY 2 : road and offroad with jumps less than 15cm  
 Maximum tyre pressure: 6.75bar/97PSI with a 23mm tyre - 3.8bar/55PSI with a 62mm tyre  
 For a longer longevity of the wheel, Mavic recommends that the total weight supported by the wheels doesn't exceed 120kg, bike included  
 Recommended tyre sizes: 25 to 32 mm  
 Max. Pressure: see indication on wheel and tyre. If they differ, use the lowest of the 2  
 Maximum tyre size: width 62mm - pressure max. 3.8Bar/55PSI

**REFERENCES WHEELS**

R36721 KSYRIUM S RB 700 QR M11

**RIMS**

&amp;NBSP;:

|   |          |                           |
|---|----------|---------------------------|
| 1 | V4093813 | Kit Rear rim Ksyrium S RB |
|---|----------|---------------------------|

**SPOKES**

|   |          |   |
|---|----------|---|
| 2 | V4163901 | Kit 12 rear Ksyrium S DS butted spoke 278mm M7/7  |
| 3 | V4163801 | Kit 12 rear Ksyrium S NDS butted spoke 297mm M7/7 |

**HUB SHELLS**

|    |           |   |
|----|-----------|---|
| 4  | N/A       | HUB BODY  |
| 5  | V2560401  | KIT 2 BEARINGS 17x28x7 + WAVED WASHER + CLIP          |
| 6  | V2252801  | KIT ID360 UB REAR AXLE W/CLIP/WAVED WASHER            |
| 7  | V2252701  | KIT ID360 INSERT SHAPED EAR LOBE > 2017               |
| 8  | V00063631 | Kit ID360 seal version 2 (larger)                     |
| 9  | V2251701  | KIT ID360 2 RATCHETS + SPRING + GREASE                |
| 10 | V2500501  | KIT ID360 3 PADS NOISE REDUCING                       |
| 11 | V2251801  | KIT 3 ID360 ROAD SPRINGS                              |
| 12 | V3430101  | HG11 Freewheel Body ID360                             |
| 13 | V2560501  | KIT ADJUST. SYSTEM QRM AUTO ID360 for 17x28x7 bearing |

|    |          |                                     |
|----|----------|-------------------------------------|
| 15 | V2252201 | KIT 2 REAR HUB RETENTION RINGS 48mm |
|----|----------|-------------------------------------|

**ADAPTERS**

|    |          |   |
|----|----------|---|
| 14 | V2253101 | KIT REAR AXLE ADAPTOR QUICK RELEASE ID360 |
|----|----------|---|

## DELIVERED WITH

|   |  |
|---|--|
| Mavic tyre sealant (rear wheel)<br>(355 466 01)                             |  |
| BR101 quick releases<br>(M40350 frt, M40351 rear road, M40352 rear MTB)     |  |
| BR101 quick releases<br>(M40350 frt, M40351 rear road, M40352 rear MTB)     |  |
| BR101 quick releases<br>(M40350 frt, M40351 rear road, M40352 rear MTB)     |  |
| UST valve and accessories<br>(129 838 01)                                   |  |
| UST valve and accessories<br>(129 838 01)                                   |  |
| UST valve and accessories<br>(129 838 01)                                   |  |
| Multifunction adjustment wrench (delivered with rear wheel)<br>(325 423 01) |  |
| User guide  |  |
| User guide  |  |
| User guide  |  |

## COMPATIBILITY

|   |  |
|---|--|
| Freewheel: Shimano/Sram, convertible to Campagnolo and XD-R with optional driver bodies                     |  |
| Freewheel: Shimano/Sram, convertible to Campagnolo and XD-R with optional driver bodies                     |  |
| Front axle: Quick Release only  |  |
| Front axle: Quick Release only  |  |
| Freewheel body: convertible SRAM XD road (kit V2580101 sold separately)                                     |  |
| Rear axle: Quick Release only   |  |
| Rear axle: Quick Release only   |  |
| Freewheel body: convertible SHIMANO HG light road (kit V3850101 sold separately)                            |  |
| Freewheel body: convertible SHIMANO MS (kit V3990101 sold separately)                                       |  |
| Freewheel body: convertible CAMPAGNOLO ED (kit V3440101 sold separately)                                    |  |
| Freewheel body: convertible CAMPAGNOLO N3W (kit V4270101 sold separately)                                   |  |
| FTS-L Shimano / Sram freewheel body ([30871101] - Delivered on the wheel)                                   |  |
| Front axle: convertible from 15mm thru axle to Quick Release with adapters (delivered with non-boost wheel) |  |

## Specifications

### RIMS

- **Material** : Maxtal
- **Material** : Maxtal
- **Material** : Maxtal
- **Height** : 22 mm
- **Height** : 22 mm
- **Height** : 22 mm
- SUP
- SUP
- **Internal width** : 19 mm
- **Brake track** : UB Control
- **Brake track** : UB Control
- **Drilling** : Fore tapeless tubeless technology (front 18 holes and rear 24 holes)
- **Tire** : UST Tubeless and tubetype
- **Tire** : UST Tubeless and tubetype
- **Internal width** : 19 mm
- **Internal width** : 19 mm
- **Brake track** : UB Control
- **ETRTO size** : 622x19TC Road

### WHEEL HUB

- **Body** : aluminum
- **Front and rear bodies** : aluminum
- **Axle material** : aluminum
- Instant Drive 360
- QRM Auto
- **Front and rear bodies** : aluminum
- **Axle material** : aluminum
- **Body design** : INFINITY
- **Axle material** : aluminum
- Hub available for Center Lock brake rotors only
- **Axles** : Front 15X110 (Boost) or 15x100 ; Rear 12X148 (Boost) or 12x142
- **Freewheel** : Shimano HG road
- **Freewheel** : FTS-L steel
- Infinity Hub
- Instant Drive 360
- QRM Auto

### VERSIONS

### WHEEL WEIGHTS

895