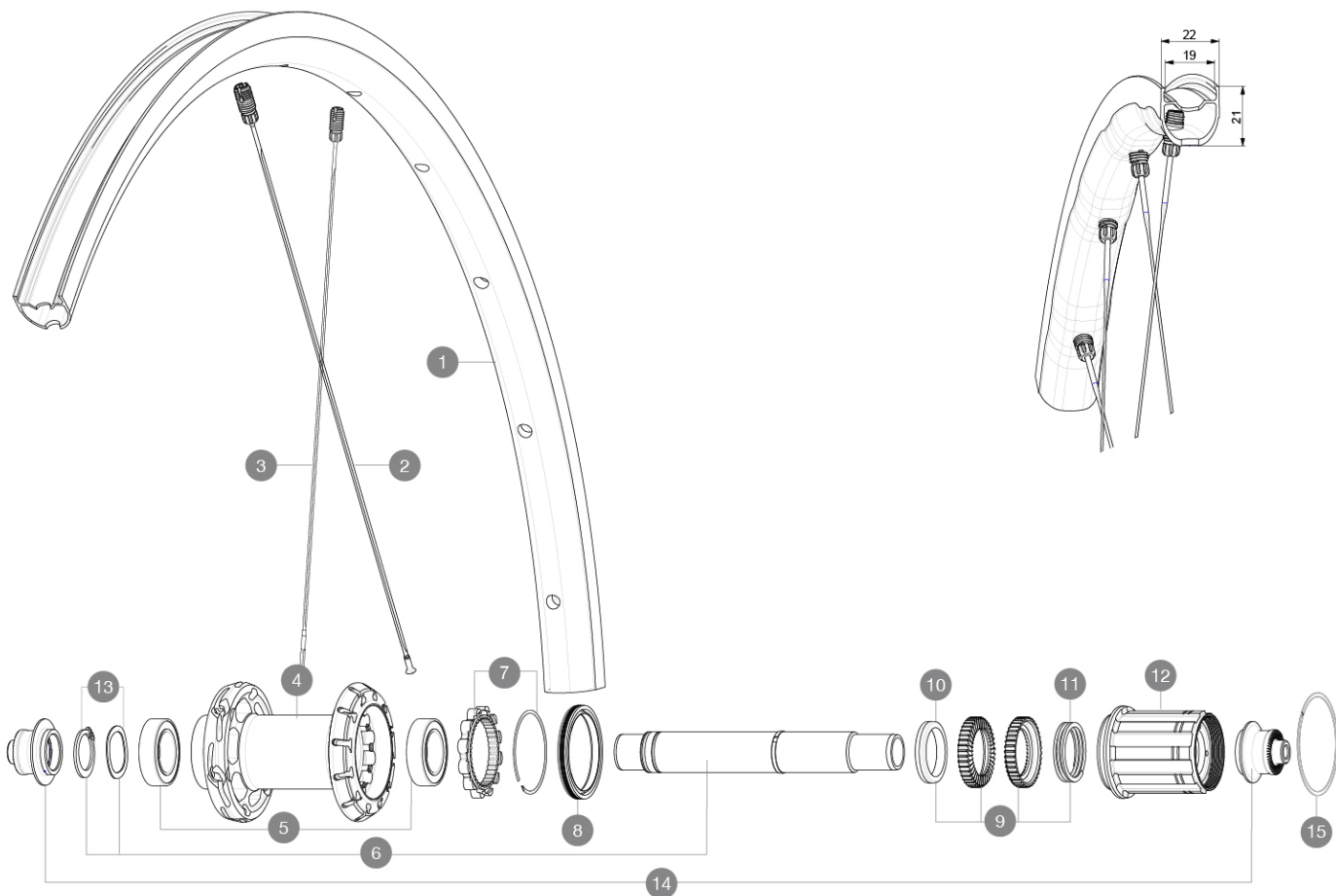


Maximum tyre pressure: 4.4bar/64PSI with a 28mm tyre - 2.6bar/38PSI with a 64mm tyre
 ASTM CATEGORY 2 : road and offroad with jumps less than 15cm
 For a longer longevity of the wheel, Mavic recommends that the total weight supported by the wheels doesn't exceed 120kg, bike included
 Maximum tyre pressure: 6.75bar/97PSI with a 23mm tyre - 3.8bar/55PSI with a 62mm tyre
 Recommended tyre sizes: 25 to 32 mm
 Max. Pressure: see indication on wheel and tyre. If they differ, use the lowest of the 2
 Maximum tyre size: width 62mm - pressure max. 3.8Bar/55PSI

REFERENCES WHEELS

R36721 KSYRIUM S RB 700 QR M11



RIMS



&NBSP;:

| | | |
|---|----------|---------------------------|
| 1 | V4093813 | Kit Rear rim Ksyrium S RB |
|---|----------|---------------------------|

SPOKES

| | | |
|---|----------|---|
| 2 | V4163901 | Kit 12 rear Ksyrium S DS butted spoke 278mm M7/7 |
| 3 | V4163801 | Kit 12 rear Ksyrium S NDS butted spoke 297mm M7/7 |

HUB SHELLS

| | | |
|----|-----------|---|
| 4 | N/A | HUB BODY |
| 5 | V2560401 | KIT 2 BEARINGS 17x28x7 + WAVED WASHER + CLIP |
| 6 | V2252801 | KIT ID360 UB REAR AXLE W/CLIP/WAVED WASHER |
| 7 | V2252701 | KIT ID360 INSERT SHAPED EAR LOBE > 2017 |
| 8 | V00063631 | Kit ID360 seal version 2 (larger) |
| 9 | V2251701 | KIT ID360 2 RATCHETS + SPRING + GREASE |
| 10 | V2500501 | KIT ID360 3 PADS NOISE REDUCING |
| 11 | V2251801 | KIT 3 ID360 ROAD SPRINGS |
| 12 | V3430101 | HG11 Freewheel Body ID360 |
| 13 | V2560501 | KIT ADJUST. SYSTEM QRM AUTO ID360 for 17x28x7 bearing |

| | | |
|----|----------|-------------------------------------|
| 15 | V2252201 | KIT 2 REAR HUB RETENTION RINGS 48mm |
|----|----------|-------------------------------------|

ADAPTERS

| | | |
|----|----------|---|
| 14 | V2253101 | KIT REAR AXLE ADAPTOR QUICK RELEASE ID360 |
|----|----------|---|

DELIVERED WITH

| | |
|---|--|
| Mavic tyre sealant (rear wheel) (355 466 01) | |
| BR101 quick releases (M40350 frt, M40351 rear road, M40352 rear MTB) | |
| BR101 quick releases (M40350 frt, M40351 rear road, M40352 rear MTB) | |
| BR101 quick releases (M40350 frt, M40351 rear road, M40352 rear MTB) | |
| UST valve and accessories (129 838 01) | |
| UST valve and accessories (129 838 01) | |
| UST valve and accessories (129 838 01) | |
| Multifunction adjustment wrench (delivered with rear wheel) (325 423 01) | |
| User guide | |
| User guide | |
| User guide | |

COMPATIBILITY

| | |
|---|--|
| Freewheel: Shimano/Sram, convertible to Campagnolo and XD-R with optional driver bodies | |
| Freewheel: Shimano/Sram, convertible to Campagnolo and XD-R with optional driver bodies | |
| Front axle: Quick Release only | |
| Front axle: Quick Release only | |
| Rear axle: Quick Release only | |
| Freewheel body: convertible SRAM XD road (kit V2580101 sold separately) | |
| Rear axle: Quick Release only | |
| Freewheel body: convertible SHIMANO HG light road (kit V3850101 sold separately) | |
| Freewheel body: convertible SHIMANO MS (kit V3990101 sold separately) | |
| Freewheel body: convertible CAMPAGNOLO ED (kit V3440101 sold separately) | |
| Freewheel body: convertible CAMPAGNOLO N3W (kit V4270101 sold separately) | |
| Front axle: convertible from 15mm thru axle to Quick Release with adapters (delivered with non-boost wheel) | |
| FTS-L Shimano / Sram freewheel body ([30871101] - Delivered on the wheel) | |

Specifications**RIMS**

- **Material** : Maxtal
- **Material** : Maxtal
- **Material** : Maxtal
- **Height** : 22 mm
- **Height** : 22 mm
- **Height** : 22 mm
- SUP
- SUP
- **Internal width** : 19 mm
- **Brake track** : UB Control
- **Brake track** : UB Control
- **Drilling** : Fore tapeless tubeless technology (front 18 holes and rear 24 holes)
- **Tire** : UST Tubeless and tubetype
- **Tire** : UST Tubeless and tubetype
- **Internal width** : 19 mm
- **Internal width** : 19 mm
- **Brake track** : UB Control
- **ETRTO size** : 622x19TC Road

WHEEL HUB

- **Body** : aluminum
- **Front and rear bodies** : aluminum
- **Axle material** : aluminum
- Instant Drive 360
- QRM Auto
- **Front and rear bodies** : aluminum
- **Axle material** : aluminum
- **Body design** : INFINITY
- **Axle material** : aluminum
- Hub available for Center Lock brake rotors only
- **Axles** : Front 15X110 (Boost) or 15x100 ; Rear 12X148 (Boost) or 12x142
- **Freewheel** : Shimano HG road
- **Freewheel** : FTS-L steel
- Infinity Hub
- Instant Drive 360
- QRM Auto

VERSIONS**WHEEL WEIGHTS**

895