

MAVIC **KSYRIUM SL**

ASTM CATEGORY 2 : road and offroad with jumps less than 15cm

Maximum tyre pressure: 4.4bar/64PSI with a 28mm tyre - 2.6bar/38PSI with a 64mm tyre

Maximum tyre pressure: 6.75bar/97PSI with a 23mm tyre - 3.8bar/55PSI with a 62mm tyre

For a longer longevity of the wheel, Mavic recommends that the total weight supported by the wheels doesn't exceed 120kg, bike included

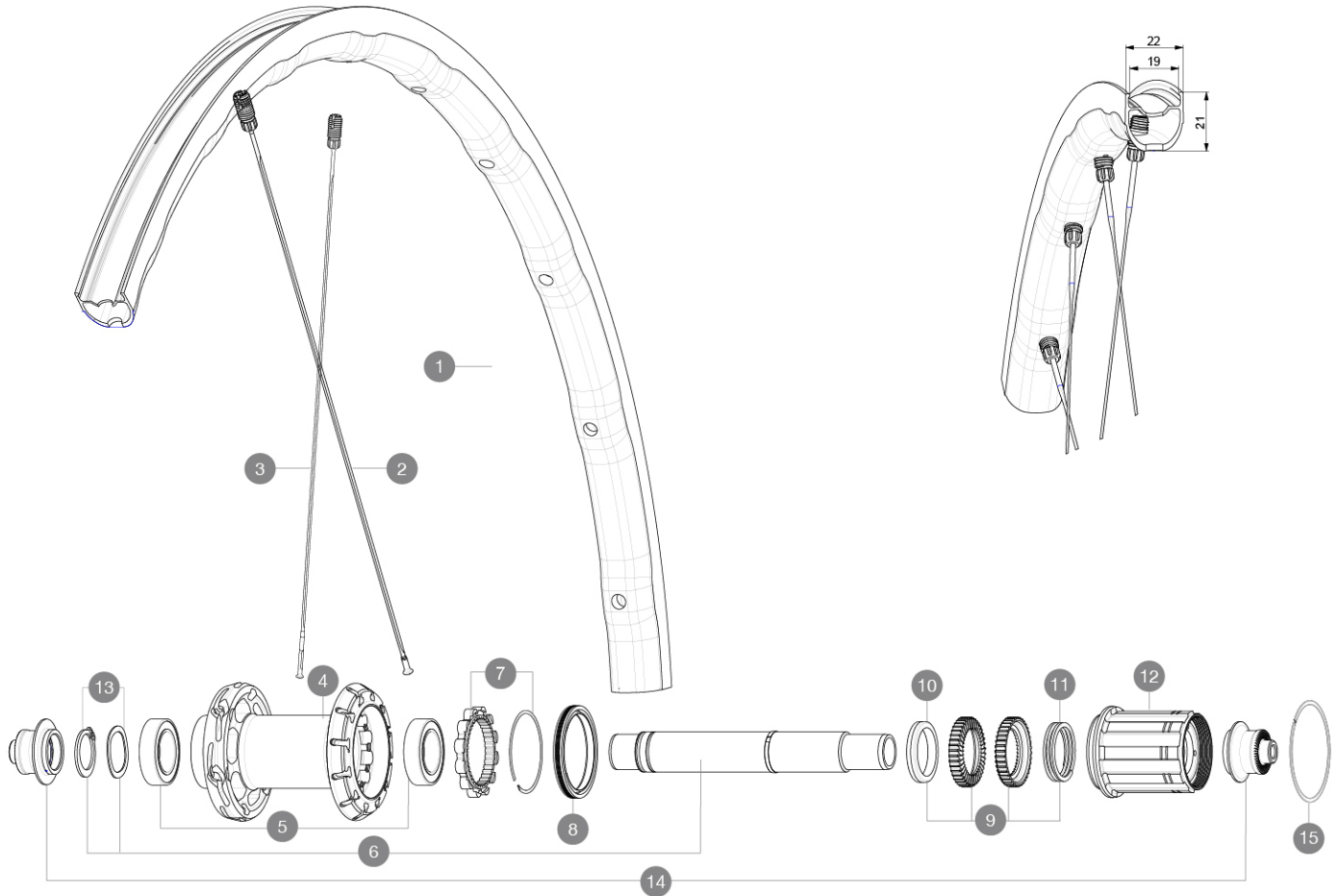
Recommended tyre sizes: 25 to 32 mm

Max. Pressure: see indication on wheel and tyre. If they differ, use the lowest of the 2

Maximum tyre size: width 62mm - pressure max. 3.8Bar/55PSI

REFERENCES WHEELS

R36781 KSYRIUM SL RB 700 QR M11

**RIMS**

&NBSP;:

1 V4094013 Kit Rear rim Ksyrium SL RB

SPOKES

2 V4164201 Kit 12 rear Ksyrium SL DS butted spoke 278mm M7/7
3 V4164101 Kit 12 rear Ksyrium SL NDS butted aero spoke 297mm M7/7

HUB SHELLS

4 N/A HUB BODY
5 V2560401 KIT 2 BEARINGS 17x28x7 + WAVED WASHER + CLIP
6 V2252801 KIT ID360 UB REAR AXLE W/CLIP/WAVED WASHER
7 V2252701 KIT ID360 INSERT SHAPED EAR LOBE > 2017
8 V00063631 Kit ID360 seal version 2 (larger)
9 V2251701 KIT ID360 2 RATCHETS + SPRING + GREASE
10 V2500501 KIT ID360 3 PADS NOISE REDUCING
11 V2251801 KIT 3 ID360 ROAD SPRINGS
12 V3430101 HG11 Freewheel Body ID360
13 V2560501 KIT ADJUST. SYSTEM QRM AUTO ID360 for 17x28x7 bearing

15 V2252201 KIT 2 REAR HUB RETENTION RINGS 48mm

ADAPTERS

14 V2253101 KIT REAR AXLE ADAPTOR QUICK RELEASE ID360

DELIVERED WITH

| | |
|-----------------------------------------------------------|--|
| User guide | |
| Mavic tyre sealant (rear wheel) (355 466 01) | |
| BR301 quick releases (V24 501 01 frt, V24 502 01 rear) | |
| BR301 quick releases (V24 501 01 frt, V24 502 01 rear) | |
| BR301 quick releases (V24 501 01 frt, V24 502 01 rear) | |
| BR301 quick releases (V24 501 01 frt, V24 502 01 rear) | |
| UST valve and accessories (129 838 01) | |
| UST valve and accessories (129 838 01) | |
| UST valve and accessories (129 838 01) | |
| User guide | |
| User guide | |
| User guide | |
| UST valve and accessories (129 838 01) | |

COMPATIBILITY

| | |
|-------------------------------------------------------------------------------------------------------------|--|
| Freewheel: Shimano/Sram, convertible to Campagnolo and XD-R with optional driver bodies | |
| Freewheel: Shimano/Sram, convertible to Campagnolo and XD-R with optional driver bodies | |
| Front axle: Quick Release only | |
| Front axle: Quick Release only | |
| Freewheel body: convertible SRAM XD road (kit V2580101 sold separately) | |
| Rear axle: Quick Release only | |
| Freewheel body: convertible SRAM XD road (kit V2580101 sold separately) | |
| Rear axle: Quick Release only | |
| Freewheel body: convertible SHIMANO HG light road (kit V3850101 sold separately) | |
| Freewheel body: convertible SHIMANO HG light road (kit V3850101 sold separately) | |
| Freewheel body: convertible SHIMANO MS (kit V3990101 sold separately) | |
| Freewheel body: convertible SHIMANO MS (kit V3990101 sold separately) | |
| Freewheel body: convertible CAMPAGNOLO ED (kit V3440101 sold separately) | |
| Freewheel body: convertible CAMPAGNOLO ED (kit V3440101 sold separately) | |
| Freewheel body: convertible CAMPAGNOLO N3W (kit V4270101 sold separately) | |
| Freewheel body: convertible CAMPAGNOLO N3W (kit V4270101 sold separately) | |
| Front axle: convertible from 15mm thru axle to Quick Release with adapters (delivered with non-boost wheel) | |
| FTS-L Shimano / Sram freewheel body ([30871101] - Delivered on the wheel) | |