

MAVIC **Crossmax SL Ultimate 25 29**

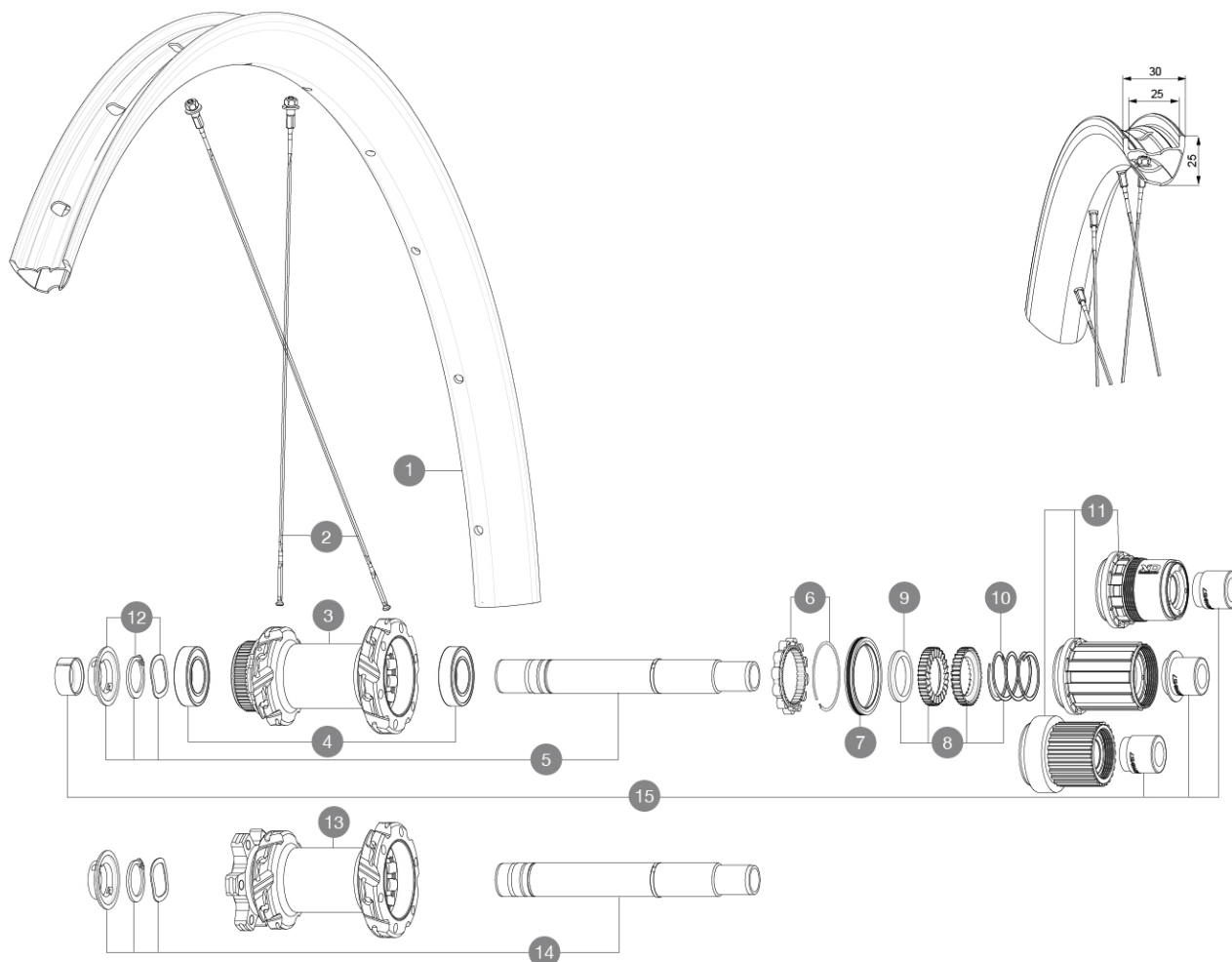
ASTM CATEGORY 3 : CROSS COUNTRY

For a longer longevity of the wheel, Mavic recommends that the total weight supported by the wheels doesn't exceed 120kg, bike included

Recommended tyre sizes: 50mm to 76mm (2.0" to 3.0")

REFERENZEN RÄDER

| | | | |
|--------|--------------------------------|--------|-------------------------------|
| R37713 | Xmax SL Ulti 25 29DCL RrBstMS* | R39952 | Xmax SL Ulti25 29INTL Rr Bst* |
| R39752 | Xmax SL Ulti25 29INTL RrBstXD* | | |

**RIMS**

&NBSP::

| | | |
|---|-----------|--|
| 1 | V00004831 | Kit Front/Rear rim Crossmax SL Ultimate 29" 22 |
| 1 | V3766615 | Kit Front/Rear rim Crossmax SL Ultimate 25 -while stock last |
| | V2700101 | UST Tape 28mm for 25 to 27mm wide rims |

SPOKES

| | | |
|---|----------|---|
| 2 | V2389101 | Kit 12Fr/Rr XmaxSL Ultimate spk293+np&w |
|---|----------|---|

HUB SHELLS

| | | |
|----|----------|--|
| 3 | N/A | NABENKÖRPER |
| 4 | M40076 | HUB BEARINGS 17x30x7 6903 x 2 |
| 5 | V2375701 | Kit ID360 148 DCL axle with circlip |
| 6 | V2252701 | KIT ID360 INSERT SHAPED EAR LOBE > 2017 |
| 7 | V2251601 | ID360 SEAL + GREASE |
| 8 | V2375201 | KIT ID360 24 TEETH 2 RATCHET + MTB SPRING + PAD (specific) |
| 9 | V2375401 | KIT ID360 MTB 24T 3 NOISE REDUCING PADS |
| 10 | V2372901 | KIT 3 ID360 MTB SPRINGS |
| 11 | V3990101 | MicroSpline MTB Freewheel Body ID360 |
| 11 | V3780101 | HG9 Alloy MTB Freewheel Body ID360 |
| 11 | V3740101 | XD MTB Freewheel Body ID360 |
| 12 | V2373001 | KIT ADJUST. SYSTEM QRM AUTO ID360 for 17x30x7 bearing |

| | | |
|----|----------|----------------------------------|
| 13 | N/A | NABENKÖRPER |
| 14 | V2372201 | KIT ID360 148 D6T AXLE WITH CLIP |

OPTIONS

| | |
|----------|---|
| V2372801 | KIT ID360 2x40 TEETH RATCHETS + MTB SPRING + GREASE + PAD |
|----------|---|

ADAPTERS

| | | |
|----|----------|---|
| 15 | V2510701 | ID360 EVO REAR AXLE ADAPTERS 12x142mm DCL & D6T |
| | V2510801 | ID360 EVO REAR AXLE ADAPTERS 9x135mm DCL & D6T |

GELIEFERT MIT

| | |
|---|--|
| UST valve and accessories (129 838 01) | |
| Pre-installed tubeless rim tape | |
| Multifunction adjustment wrench (delivered with rear wheel) (325 423 01) | |
| Wheelbag (V24 801 01) | |
| 2 replacement spokes with each wheel | |

COMPATIBILITY

| | |
|--|--|
| Freewheel: Shimano HG9, XD or Micro Spline | |
| Rear axle: 12x148 Boost thru axle | |
| Front axle: 15x110 Boost thru axle | |

Specifications**FELGEN**

- **Material** : 100% carbon fiber
 - **Drilling** : traditional
 - **Internal width** : 25 mm
 - **ETRTO size 29"** : 622x25TSS
- Hookless profile
Asymmetrical rim design
Adaptive Layup Carbon technology
UST Tubeless Ready

SPEICHEN

- **Material** : steel
- **Shape** : straight pull, flat, double butted
- **Nipples** : aluminum, ABS
- **Count** : 24 front and rear
- **Lacing** : front and rear crossed 2, contactless

RADNABE

Hub available with 6-bolt or center lock (R) brake rotors

- **Axles** : Front 15X110 Boost ; Rear 12X148 Boost

Infinity Hub
Instant Drive 360
QRM Auto

VERSIONS

- **Disc standard** : 6 Bolts or Center Lock (R)
- **Hub width** : Boost only (front 110, rear 148)
- **Freewheel** : SRAM XD, Shimano HG9, Shimano Micro-Spline

RADGEWICHTE

735