

MAVIC CROSSMAX SL ULTIMATE 30 29

ASTM CATEGORY 3 : CROSS COUNTRY

For a longer longevity of the wheel, Mavic recommends that the total weight supported by the wheels doesn't exceed 150kg, bike included

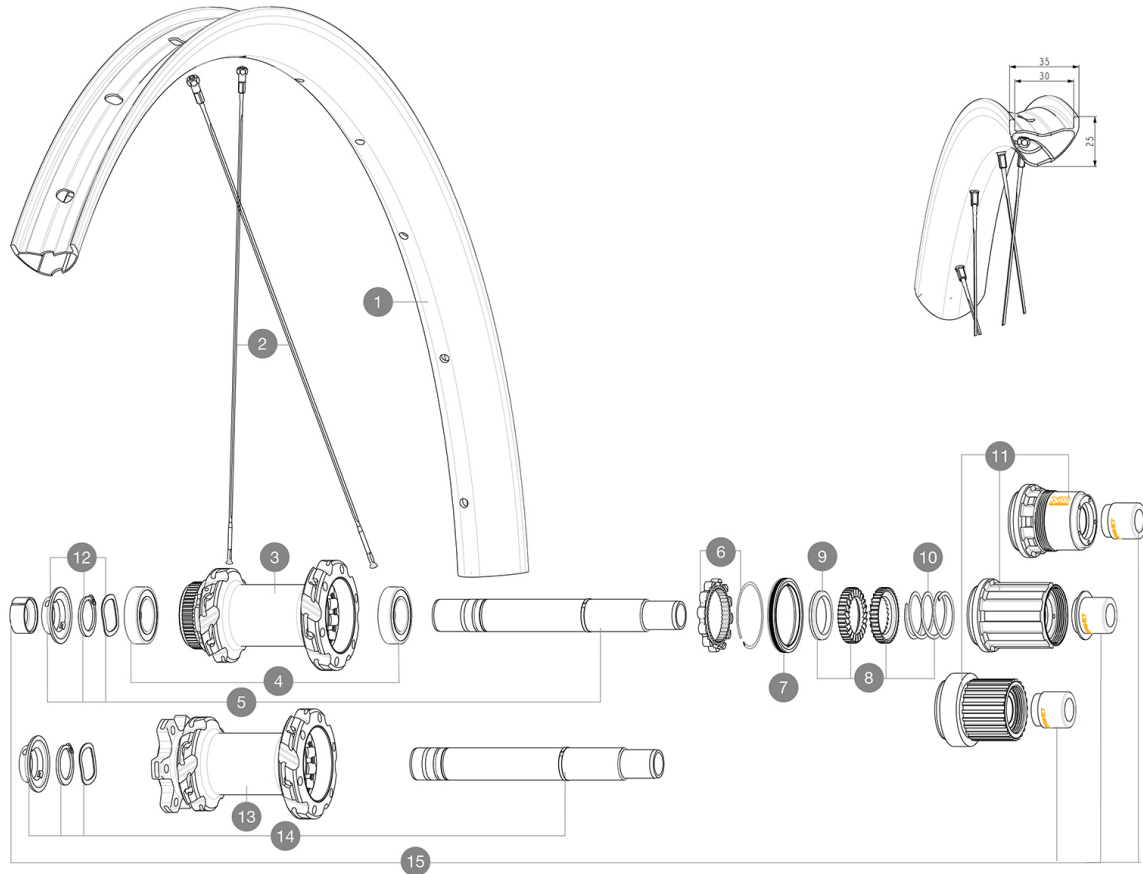
Maximum tyre pressure: 2.35bar/34PSI with a 52mm tyre - 1.25bar/18PSI with a 125mm tyre

Minimum tyre size: width 52mm - pressure max. 2.35Bar/34PSI

Recommended tire sizes: 50mm to 76mm (2.0" to 3.0")

REFERENCES WHEELS

R38941	XMAXSLULT 30 CL 29 BST MS	R39962	XMAXSLULT 30 INT 29 BST HG
R39771	XMAXSLULT 30 INT 29 BST XD		



RIMS



&NBSP;:

1	V00004631	Kit Front/Rear rim Crossmax SL Ultimate 30
	V3750101	35mm UST Green Tape for 30mm wide rims

SPOKES

2	V00065231	Kit 12Ft/Rr MTBcarb29 ss spk293
2	V2389101	Kit 12Fr/Rr XmaxSL Ultimate spk293+np&w while stock lasts

HUB SHELLS

3	N/A	HUB BODY
4	M40076	HUB BEARINGS 17x30x7 6903 x 2
5	V2375701	Kit ID360 148 DCL axle with circlip
6	V2252701	KIT ID360 INSERT SHAPED EAR LOBE > 2017
7	V00063631	Kit ID360 seal version 2 (larger)
8	V2375201	KIT ID360 24 TEETH 2 RATCHET + MTB SPRING + PAD (specific)
9	V2375401	KIT ID360 MTB 24T 3 NOISE REDUCING PADS
10	V2372901	KIT 3 ID360 MTB SPRINGS
11	V3780101	HG9 Alloy MTB Freewheel Body ID360
11	V3740101	XD MTB Freewheel Body ID360
11	V3990101	MicroSpline MTB Freewheel Body ID360
12	V2373001	KIT ADJUST. SYSTEM QRM AUTO ID360 for 17x30x7 bearing
13	N/A	HUB BODY

14	V2372201	KIT ID360 148 D6T AXLE WITH CLIP
----	----------	----------------------------------

OPTIONS

8	V2372801	KIT ID360 2x40 TEETH RATCHETS + MTB SPRING + GREASE + PAD
---	----------	---

ADAPTERS

15	V2510701	ID360V2RrAxleAdapt12x142/148
	V2510801	ID360 V2 RrAxleAdapt9x135

DELIVERED WITH

UST valve and accessories (129 838 01)	
UST valve and accessories (129 838 01)	
Pre-installed tubeless rim tape	
Pre-installed tubeless rim tape	
Multifunction adjustment wrench (delivered with rear wheel) (325 423 01)	
Wheelbag (V24 801 01)	
Wheelbag (V24 801 01)	
User guide	
2 replacement spokes with each wheel	
2 replacement spokes with each wheel	

COMPATIBILITY

Front axle: 15x110 Boost thru axle	
Freewheel body: convertible SHIMANO HG MTB steel (kit V3790101 sold separately)	
Rear axle adapters: 12x148 convertible to 9x141 (kit V2510801 sold separately)	
Rear axle: 12x148 Boost thru axle	
Front axle: 15x110 Boost thru axle	
Front axle: for fixing nuts only (included), M9x1 thread	

Specifications

RIMS

- **Material** : 100% carbon fiber with UD² external layer
- **Material** : 100% carbon fiber with UD² external layer
- **Height** : 25 mm
- **Drilling** : traditional
- **Internal width** : 30 mm
- **Drilling** : traditional
- Disc brake specific profile
- **Internal width** : 30 mm
- E-Bike specific rim profile
- Hookless profile
- **ETRTO size 29"** : 622x30TSS
- **ETRTO size 29"** : 622x30TSS
- Adaptive Layup Carbon technology
- **Tire** : clincher
- UST Tubeless Ready

SPOKES

- **Material** : steel
- **Material** : steel
- **Shape** : straight pull, flat, double butted
- **Shape** : j-bent, round, 2.0 straight gauge
- **Nipples** : aluminum, ABS
- **Count** : front 18, rear 24
- **Count** : 24 front and rear
- **Lacing** : front and rear crossed 2, contactless
- R2R carbon spoke technology

WHEEL HUB

- **Body** : aluminum
- Infinity hubs
- Instant Drive 360 freewheel technology
- QRM Auto bearing preload technology
- Hub available with 6-bolt or Center Lock[®] brake rotors
- **Axles** : Front 15X110 Boost ; Rear 12X148 Boost
- **Body design** : INFINITY
- **Disc standard** : 6 Bolts or Center Lock[®]
- **Axle material** : aluminum
- **Rear body** : aluminum
- **Axles** : Front 15X110 (Boost) or 15x100 ; Rear 12X148 (Boost) or 12x142
- **Rear** : Quick Release, 12x142 and 12x135 compatible
- **Freewheel** : FTS-L steel

VERSIONS

- **Disc standard** : 6 Bolts or Center Lock[®]
- **Hub width** : Boost only (front 110, rear 148)
- **Freewheel** : SRAM XD, Shimano HG9, Shimano Micro-Spline

WHEEL WEIGHTS

760