

ASTM CATEGORY 3 : CROSS COUNTRY

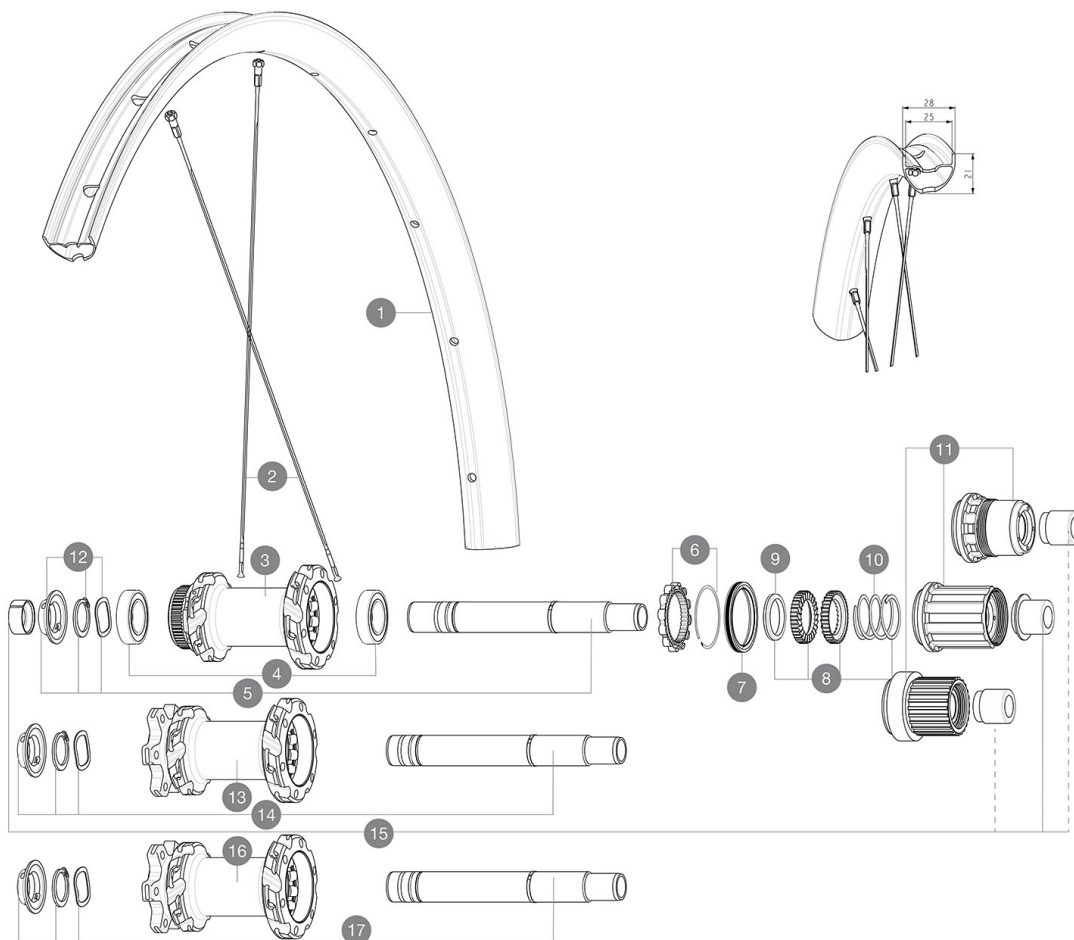
For a longer longevity of the wheel, Mavic recommends that the total weight supported by the wheels doesn't exceed 150kg, bike included

Maximum tyre pressure: 4.1bar/59PSI with a 28mm tyre - 2.45bar/36PSI with a 64mm tyre

Recommended tyre sizes: 28 to 64 mm (1.1" to 2.5")

REFERENCES WHEELS

R40571	CROSSMAX INT 29 BST XD	R42241	CROSSMAX INT 29 XD
R40581	CROSSMAX CL 29 BST MS	R42251	CROSSMAX INT 29 HG
R41071	CROSSMAX INT 29 BST HG		



RIMS



&NBSP;:

1	V3766715	Kit Front/Rear rim Crossmax 22 29"
	V2700101	UST Tape 28mm for 25 to 27mm wide rims

SPOKES

2	V2381401	KIT 12 FT/RR BUTTED SPOKES 296mm MTB 29"
---	----------	--

HUB SHELLS

3	N/A	HUB BODY
4	M40076	HUB BEARINGS 17x30x7 6903 x 2
5	V2375701	Kit ID360 148 DCL axle with circlip
6	V2252701	KIT ID360 INSERT SHAPED EAR LOBE > 2017
7	V00063631	Kit ID360 seal version 2 (larger)
8	V2375201	KIT ID360 24 TEETH 2 RATCHET + MTB SPRING + PAD (specific)
9	V2375401	KIT ID360 MTB 24T 3 NOISE REDUCING PADS
10	V2372901	KIT 3 ID360 MTB SPRINGS
11	V3990101	MicroSpline MTB Freewheel Body ID360
11	V3780101	HG9 Alloy MTB Freewheel Body ID360
11	V3740101	XD MTB Freewheel Body ID360
12	V2373001	KIT ADJUST. SYSTEM QRM AUTO ID360 for 17x30x7 bearing
13	N/A	HUB BODY
14	V2372201	KIT ID360 148 D6T AXLE WITH CLIP
16	N/A	HUB BODY

17	V2372101	KIT ID360 135/142 D6T AXLE WITH CLIP
----	----------	--------------------------------------

OPTIONS

8	V2372801	KIT ID360 2x40 TEETH RATCHETS + MTB SPRING + GREASE + PAD
---	----------	---

ADAPTERS

15	V2510701	ID360V2RrAxleAdapt12x142/148
	V2510801	ID360 V2 RrAxleAdapt9x135

MAVIC **CROSSMAX 29****DELIVERED WITH**

UST valve and accessories (129 838 01)	
UST valve and accessories (129 838 01)	
Pre-installed tubeless rim tape	
Pre-installed tubeless rim tape	
User guide	
2 replacement spokes with each wheel	
2 replacement spokes with each wheel	

COMPATIBILITY

Front axle: convertible from 15mm thru axle to Quick Release with adapters (delivered with non-boost wheel)	
Rear axle: 12mm thru axle, convertible to Quick Release with adapters (delivered with non-boost wheel)	
Freewheel body: convertible SHIMANO HG MTB steel (kit V3790101 sold separately)	
Front axle adapters: 15x100 convertible to 9x100 (kit 99694101 sold separately)	
Front axle adapters: 15x110 convertible to 9x110 (kits 99694101 + V2372501 sold separately)	
Rear axle adapters: 12x148 convertible to 9x141 (kit V2510801 sold separately)	
Rear axle: for fixing nuts only (included), M9x1 thread	
Instant Drive 360 freewheel technology The new Instant Drive 360 freewheel system is super light and fast to engage with only 9Å°. A large contactless rubber seal provides low friction, while a wide array of end caps makes it super versatile.	
ID360 Sram XD freewheel body (V3740101)	
Front axle: for fixing nuts only (included), M9x1 thread	

Specifications**RIMS**

- **Material** : Maxtal
- **Material** : Maxtal
- **Height** : 21 mm
- **Joint** : SUP welding technology
- **Joint** : SUP welding technology
- **Drilling** : traditional
- **Internal width** : 25 mm
- **Valve hole diameter** : 6.5 mm
- **Drilling** : traditional
- **Internal width** : 25 mm

Disc brake specific profile

E-Bike specific rim profile

- **ETRTO size 29"** : 622x25TSS

Use with Mavic Tubeless Tape

- **ETRTO size 29"** : 622x25TSS

Asymmetrical rim design

- **Tire** : clincher
- UST Tubeless Ready

SPOKES

- **Material** : steel
- **Material** : steel
- **Shape** : straight pull, flat, double butted
- **Shape** : j-bent, round, 2.0 straight gauge
- **Nipples** : steel, ABS
- **Count** : 24 front and rear
- **Lacing** : front and rear crossed 2
- R2R carbon spoke technology

WHEEL HUB

Infinity hubs

- **Body** : aluminum

Instant Drive 360 freewheel technology

QRM Auto bearing preload technology

Hub available with 6-bolt or Center LockÅ® brake rotors

- **Axles** : Front 15X110 (Boost) or 15x100 ; Rear 12X148 (Boost) or 12x142

- **Body design** : INFINITY

- **Disc standard** : 6 Bolts or Center LockÅ®

- **Axle material** : aluminum

- **Rear body** : aluminum

- **Axle size** : front 15x100 / rear 12X142 -

Convertible to quick release with included adapters

- **Axles** : Front 15X110 (Boost) or 15x100 ; Rear 12X148 (Boost) or 12x142

- **Freewheel** : Shimano HG MTB / Shimano MS /

Sram XD MTB

- **Freewheel** : FTS-L steel

VERSIONS

- **Disc standard** : 6 Bolts or Center LockÅ®

- **Hub width** : Boost (front 110, rear 148) or Non-Boost (front 100, rear 135/142) 6 bolts

- **Freewheel** : SRAM XD, Shimano HG9, Shimano

Micro-Spline

WHEEL WEIGHTS

950