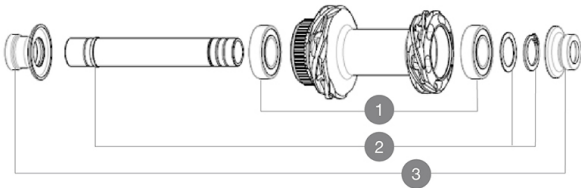


### REFERENCES WHEELS

H44201	MR801 INF SP FT CL 12X100 24H
--------	-------------------------------



### HUB SHELLS

1	M40129	KIT 2 BEARINGS 6902 15x28x7
2	V2373301	KIT QRM AUTO FRONT AXLE 12mm > 2019

### ADAPTERS

3	V2374701	KIT FRONT ROAD FORK REST 12mm FOR J BENT DISC HUB
---	----------	---

MAVIC

MR801 INFINITY SP DISC

COMPATIBILITY

Freewheel: Shimano/Sram, convertible to Campagnolo ED11, N3W and XD-R with optional driver bodies	
Front axle: 12mm thru axle, easily convertible to quick release with optional adapters. Convertible to 15mm with complete axle replacement	
Rear axle: 12mm thru axle, convertible to Quick Release with optional adapters and axle replacement	
Maximum spoke width: 2,4mm	

Specifications

WHEEL HUB

- Infinity hubs
- **Front and rear bodies** : aluminum
  - **Axle material** : aluminum
- Instant Drive 360 freewheel technology  
QRM Auto bearing preload technology
- **Front** : Quick release and 12x100 through axle compatible
  - **Rear** : Quick Release, 12x142 and 12x135 compatible

WHEEL WEIGHTS

VERSIONS

- **Disc standard** : Center Lock® only
- **Front for disc brake** : 24, 28 and 32 holes
- **Rear for disc brake** : 24, 28 and 32 holes