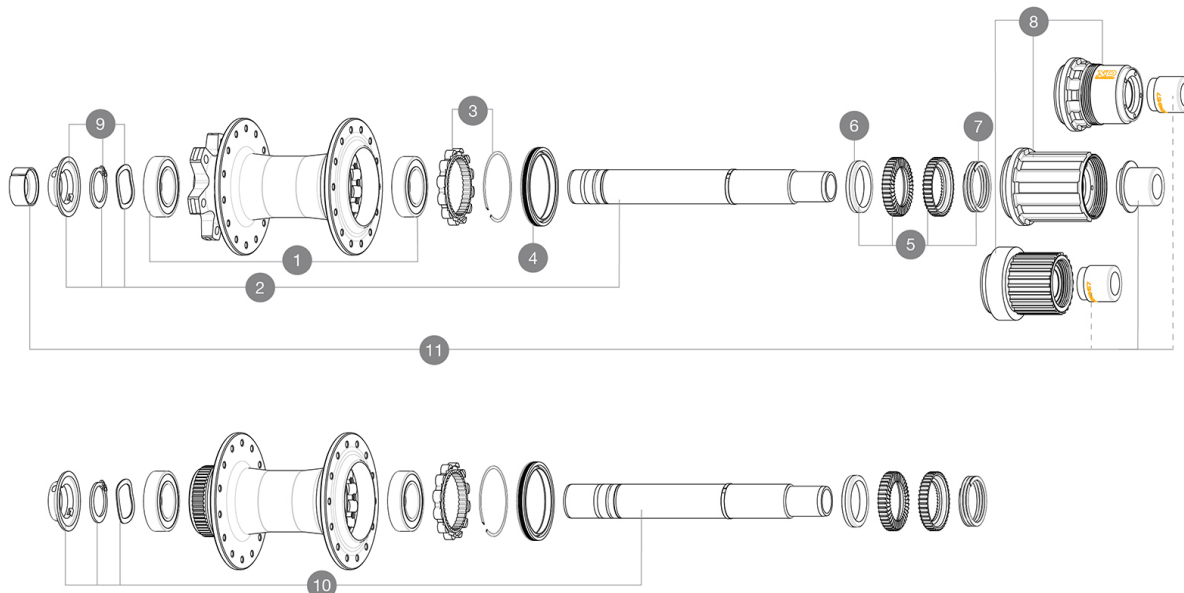


## REFERENCES WHEELS



### HUB SHELLS

1	M40076	HUB BEARINGS 17x30x7 6903 x 2
2	V2372201	KIT ID360 148 D6T AXLE WITH CLIP
3	V2252701	KIT ID360 INSERT SHAPED EAR LOBE > 2017
4	V2251601	KIT ID360 SEAL + GREASE
5	V2375201	KIT ID360 24 TEETH 2 RATCHET + MTB SPRING + PAD (specific)
6	V2375401	KIT ID360 MTB 24T 3 NOISE REDUCING PADS
7	V2372901	KIT 3 ID360 MTB SPRINGS
8	V3780101	HG9 Alloy MTB Freewheel Body ID360
8	V3740101	XD MTB Freewheel Body ID360
8	V3990101	MicroSpline MTB Freewheel Body ID360
8	V3790101	HG9 Steel MTB Freewheel Body ID360
9	V2373001	KIT ADJUST. SYSTEM QRM AUTO ID360 for 17x30x7 bearing
10	V2375701	Kit ID360 148 DCL axle with circlip

### OPTIONS

5	V2372801	KIT ID360 2x40 TEETH RATCHETS + MTB SPRING + GREASE + PAD
---	----------	---

### ADAPTERS

11	V2510701	ID360V2RrAxleAdapt12x142/148
----	----------	------------------------------

**MAVIC** **MX801 CLASSIC DISC****COMPATIBILITY**

Rear axle: 12mm thru axle, convertible to Quick Release with optional adapters and axle replacement	
Maximum spoke width: 2,4mm	
Freewheel: Shimano HG9, XD or Micro Spline	
Rear axle: 12x148 Boost thru axle	
Front axle: 15x110 Boost thru axle	

**Specifications****WHEEL HUB**

- **Front and rear bodies** : aluminum
  - **Axle material** : aluminum
- Instant Drive 360 freewheel technology  
QRM Auto bearing preload technology
- **Axles** : Front 15X110 Boost ; Rear 12X148 Boost

**VERSIONS**

- **Disc standard** : 6 Bolts or Center Lock
  - **Hub width** : Boost only (front 110, rear 148)
- 28 & 32 holes

**WHEEL WEIGHTS**